



**The 70th North American Meetings of
the Regional Science Association International &
the XVII Spatial Econometrics Association World Conference**

Co-hosted by
the North American Regional Science Council,
the Western Regional Science Association, and
the Spatial Econometrics Association

**November 15-18, 2023
San Diego, California**

Welcome to San Diego!

On behalf of the North American Regional Science Council and the Western Regional Science Association, we welcome you to San Diego, California for the 70th Annual North American Meetings of the Regional Science Association International. This year, we are excited to have the Spatial Econometrics Association (SEA) joining us!

We look forward to some exciting events this year including, but not limited to, the RSAI Fellows Lecture given by Alan Murray on Wednesday, Genevieve Giuliano's Presidential Plenary on Thursday, and the plenary session on "Making Regional Planning Work in San Diego/Tijuana" which commemorates the 50th anniversary of "Temporary Paradise?" authored by Donald Appleyard and Kevin Lynch on Thursday evening. SEA is also hosting a series of plenary talks including The Board of Directors' Cut 1 through 4, featuring talks by Peter Egger, Luc Anselin, Malabika Koley, and Giuseppe Arbia on Thursday and Friday.

While you are here with us, make sure you take some time to discover what San Diego has to offer, including the district where the conference venue is located, the historic Gaslamp Quarter, which is known for being a vibrant place for entertainment and dining. If you ask ChatGPT the places worth visiting, it suggests Balboa Park which offers a plethora of museums, gardens, and the famous San Diego Zoo, the Old Town San Diego State Historic Park where you can explore the birthplace of California, and La Jolla, a picturesque coastal community, where you can often spot seals and sea lions at the famous La Jolla Cove. If you would rather be guided by someone who knows the city, sign up for the walking tour of craft breweries in the Barrio Logan neighborhood with the owner of Border X Brewing as your tour guide, organized by Julie Wartell and Neil Reid.

We hope that you, in addition to touring the city and attending the many exciting paper presentations over the next three days, take the opportunity to reconnect with colleagues and make new connections for future collaborations.

Special thanks to John Spring, the NARSC Executive Director for overall arrangements for this conference and to Soomi Lee for her work as the Program Chair.

Enjoy the 70th NARSC Conference, the 2023 SEA Conference, and San Diego!

Isabelle Nilsson
NARSC Council Chair, on behalf of the NARSC Council

Welcome from the SEA

This year, the XVII Spatial Econometrics Association (SEA) World Conference is run jointly with NARSC, which we thank for its hospitality.

SEA was founded in 2006 to " promote the development of theoretical tools and sound applications of the discipline of spatial econometrics, including spatial statistics and spatial data analysis."

Originally founded by 7 scholars (Luc Anselin, Giuseppe Arbia, Badi Baltagi, Harry Kelejian, Jean Paelinck, Ingmar Prucha and Peter Robinson), SEA is currently run by a Board of Directors (which includes Badi Baltagi, Anil Bera, Peter Egger, Harry Kelejian, Hashem Pesaran and Ingmar Prucha) and chaired by Giuseppe Arbia.

The San Diego Conference Scientific Committee includes the following SEA members: Giuseppe Arbia, Anil Bera, Roger Bivand, Jean Paul Elhorst, Ingmar Prucha, Julie Le Gallo, Alain Pirotte, Peter Robinson, Francesca Rossi, and Yang Zehnlín.

For the organization of the SEA sessions, we must gratefully acknowledge the contribution of the Conference Organising Committee constituted by: Elisa Fusco, Vincenzo Nardelli, Niccolò Salvini, and Ilaria Valentini.

This year's SEA World Conference features, in particular:

- 4 plenary sessions (termed "**The Board of Directors' cut**") where past and current Directors of the SEA will present their most recent work. Presenters will be Luc Anselin, Giuseppe Arbia, Anil Bera and Peter Egger.
- 1 organized session on "**Spatial interaction modeling**"
- 1 round table on "**Spatial Econometrics Software**"
- 8 concurrent sessions
- The meeting of all the members of the SEA

San Diego Conference is the XVII of SEA. A list of the previous conference locations can be found at <https://www.spataleconometricsassociation.org/conferences/>

Next year, the **XVIII conference** of the Association will take place in **Groningen** (The Netherlands) on June 24th-25th.

More info on SEA can be found on the website: <https://www.spataleconometricsassociation.org/>

Table of Contents

A Safe and Healthy Conference.....	4
2023 Organizing and Program Committee.....	5
NARSC Graduate Student Paper Competition Committee.....	7
NARSC Directory.....	8
Past and Future Conferences.....	9
Instructions to Session Chairs, Presenters, and Discussants.....	11
Conference Highlights and Business Meetings.....	12
RS&I Fellows Lecture.....	14
NARSC Presidential Address.....	15
Papers in Regional Science Annual Lecture	16
Conference Program	17
Wednesday.....	18
Thursday.....	20
Friday.....	41
Saturday.....	63
Walking Tour.....	78
Participant Index.....	79
Sponsors.....	96
Floor Plan for Meeting Rooms	97
Dine around Guide.....	98

A Safe and Healthy Conference

NARSC is committed to making the 70th Annual Meetings of the Regional Science Association International a safe and healthy event for our attendees, industry partners, exhibitors, volunteers, and team members. It is important to note that large, in-person meetings are happening throughout the country, and they are happening safely. All conference attendees must agree to the Duty to Self-Monitor during the conference.

IMPORTANT INFORMATION: Considering the ongoing issue of COVID-19, individuals who fall within any of the categories below should not engage in any NARSC events or, if registered and fall into one of those categories prior to the conference, should request a refund. By attending the 69th Annual Meetings of the Regional Science Association International, you certify that you do not fall into any of the following categories and have complied with the following:

- Individuals who have tested positive for COVID-19 within the prior 10 days of the event or are currently showing COVID-19 symptoms.
- Individuals who, within the prior fourteen (14) days of the event, have experienced any symptoms associated with COVID-19, which include fever, cough, and shortness of breath among others.
- Individuals who believe that they may have been exposed to a confirmed or suspected case of COVID-19 or have been diagnosed with COVID-19 and are not yet cleared as non-contagious by state or local public health authorities or the health care team responsible for their treatment.

DUTY TO SELF-MONITOR: Attendees to any activity connected with the 70th Annual Meetings of the Regional Science Association International agree to self-monitor during the event for signs and symptoms of COVID-19 (symptoms typically include fever, cough, and shortness of breath) and immediately contact the AWS staff on-site should they test positive for COVID-19 or experiences symptoms of COVID-19.

LIABILITY WAIVER AND RELEASE OF CLAIMS: By attending the 70th Annual Meetings of the Regional Science Association International, you acknowledge that your decision to attend is personal and voluntary in nature, and in choosing to do so, recognize, assume all risks associated with attendance, including exposure to COVID-19.

2023 Organizing and Program Committee

Local Arrangements

John Spring, BEA, U.S. Department of Commerce (retired)

Program Chair

Soomi Lee, University of La Verne

Session and Workshop Organizers

Adam Rose, University of Southern California
Alan Murray, University of California - Santa Barbara
Alberto Solis, National Renewable Energy Laboratory
Andre Fernandes Tomon Avelino, National Renewable Energy Laboratory
Bruce Appleyard, San Diego State University
Carlos Moreno, IAE - Paris1 Sorbonne University
Chen Zhenhua, Ohio State University
Christine Thomas-Agnan, Toulouse School of Economics
Dimitra Pyrialakou, West Virginia University
Eleni Bardaka, North Carolina State University
Elijah Knapp, University of California – Riverside
Geoffrey Hewings, University of Illinois at Urbana-Champaign
Giuseppe Arbia, Catholic University
Haoying Wang, New Mexico Tech
Heather Stephens, West Virginia University
Isabelle Nilsson, University of North Carolina – Charlotte
John Winters, Iowa State University
Julie Wartell, University of California - San Diego
Karima Kourtit, Open University
Kevin Credit, Maynooth University
Kingsley Haynes, George Mason University
Kyle Hood, BEA
Lisa L Losada Rojas, The University of New Mexico
Luc Anselin, University of Chicago
Mahsa Gholizadeh, BEA
Matthew Lyons, University of Birmingham
Neil Reid, University of Toledo
Paul Krugman, Princeton University/City University of New York
Pedro Amaral, Universidade Federal de Minas Gerais
Peter Batey, University of Liverpool
Peter Nijkamp, Open University
Rafael Garduño Rivera, University of Navarra
Ran Wei, University of California – Riverside
Roger Bivand, Norwegian School of Economics (NHH)

Rosella Nicolini, Universitat Autònoma de Barcelona
Sandy Dall'Erba, University of Illinois - Urbana-Champaign
Sarah Low, University of Illinois - Urbana-Champaign
Sergio Rey, University of California - Riverside
Stephan Weiler, Colorado State University
Tessa Conroy, University of Wisconsin - Madison
Tim Komarek, Colorado State University, Old Dominion University
Timothy Komarek, Old Dominion University
Yasuhide Okuyama, University of Kitakyushu

NARSC Graduate Student Paper Competitions

Committee Co-Chairs

Christa Court, University of Florida

Andre Fernandes Tomon Avelino, National Renewable Energy Laboratory

Reading Committee

Kathy Baylis, University of California, Berkeley

Jaewon Lim, University of Nevada, Las Vegas

Jeffrey Zax, University of Colorado at Boulder

Bruce Newbold, McMaster University

Amanda Ross, University of Alabama

Michael Reed, Lower Colorado River Authority

Dayton Lambert, Oklahoma State University

Zheng Tian, Pennsylvania State University

NARSC Directory

Voting Members

- Genevieve Giuliano, President, University of Southern California
- Isabelle Nilsson, Councilor-at-Large, 2021-2023, University of North Carolina - Charlotte
- John V. Winters, Councilor-at-Large, 2021-2023, Iowa State University
- Ting Zhang, Councilor-at-Large, 2022-2024, University of Baltimore
- Biswa Das, Councilor-at-Large, 2022-2024, Iowa State University
- Clio Andris, Councilor-at-Large, 2023-2025, Georgia Institute of Technology
- Sarah Low, Councilor-at-Large, 2023-2025, University of Illinois Urbana-Champaign
- Hanxue Wei, Student Representative, 2023-2024, Cornell University
- Bruce Newbold, Canadian RSA, McMaster University
- Tessa Conroy, Mid-Continent RSA, University of Wisconsin-Madison
- Heather Stephens, Northeast RSA, West Virginia University
- Amanda L. Weinstein, Southern RSA, University of Akron
- Jaewon Lim, Western RSA, University of Nevada, Las Vegas

Ex-officio (Nonvoting) Members

- John Spring, NARSC Executive Director
- Andrea Caragliu, RSAI Executive Director, Politecnico di Milano,
- Rosella Nicolini, Editor-in-Chief, Papers in Regional Science, Universitat Autònoma de Barcelona
- Isabelle Nilsson, Editor, Regional Science Policy & Practice, University of North Carolina - Charlotte
- Neil Reid, Editor and Book Reviews Editor, Regional Science Policy & Practice, University of Toledo
- Tessa Conroy, Editor, Papers in Regional Science, University of Wisconsin-Madison
- Eric Delmelle, Editor, Papers in Regional Science, University of North-Carolina

Past and Future Conferences

Detroit, MI	December 27-29, 1954
New York, NY	December 27-30, 1955
Cleveland, OH	December 27-29, 1956
Philadelphia, PA	December 28-30, 1957
Chicago, IL	December 27-29, 1958
Washington, DC	December 27-29, 1959
St. Louis, MO	December 28-30, 1960
New York, NY	December 27-29, 1961
Pittsburgh, PA	December 27-29, 1962
Chicago, IL	November 15-17, 1963
Ann Arbor, MI	November 13-16, 1964
Philadelphia, PA	November 12-14, 1965
Clayton, MO	November 4-6, 1966
Cambridge, MA	November 3-5, 1967
Cambridge, MA	November 8-10, 1968
Santa Monica, CA	November 7-9, 1969
Philadelphia, PA	November 6-8, 1970
Ann Arbor, MI	November 12-14, 1971
Philadelphia, PA	November 10-12, 1972
Atlanta, GA	November 9-11, 1973
Chicago, IL	November 8-10, 1974
Cambridge, MA	November 7-9, 1975
Toronto, Ontario	November 12-14, 1976
Philadelphia, PA	November 11-13, 1977
Chicago, IL	November 10-12, 1978
Los Angeles, CA	November 9-11, 1979
Milwaukee, WI	November 14-16, 1980
Montreal, Quebec	November 13-15, 1981
Pittsburgh, PA	November 12-14, 1982
Chicago, IL	November 11-13, 1983
Denver, CO	November 9-11, 1984
Philadelphia, PA	November 15-17, 1985
Columbus, OH	November 14-16, 1986
Baltimore, MD	November 6-8, 1987
Toronto, Ontario	November 11-13, 1988
Santa Barbara, CA	November 10-12, 1989
Boston, MA	November 9-11, 1990
New Orleans, LA	November 7-11, 1991
Chicago, IL	November 12-14, 1992
Houston, TX	November 11-14, 1993
Niagara Falls, Ontario	November 17-20, 1994
Cincinnati, OH	November 8-13, 1995

Arlington, VA	November 14-17, 1996
Buffalo, NY	November 5-9, 1997
Santa Fe, NM	November 11-14, 1998
Montreal, Quebec	November 11-14, 1999
Chicago, IL	November 9-11, 2000
Charleston, SC	November 15-17, 2001
San Juan, PR	November 14-17, 2002
Philadelphia, PA	November 20-23, 2003
Seattle, WA	November 11-13, 2004
Las Vegas, NV	November 10-12, 2005
Toronto, Ontario	November 15-19, 2006
Savannah, GA	November 7-11, 2007
New York City, NY	November 19-22, 2008
San Francisco, CA	November 19-21, 2009
Denver, CO	November 10-13, 2010
Miami, FL	November 9-12, 2011
Ottawa, Canada	November 7-10, 2012
Atlanta, GA	November 13-16, 2013
Washington, DC	November 12-15, 2014
Portland, OR	November 11-14, 2015
Minneapolis, MN	November 9-12, 2016
Vancouver, Canada	November 8-11, 2017
San Antonio, TX	November 7-10, 2018
Pittsburgh, PA	November 13-16, 2019
Virtual Conference	November 9-13, 2020
Denver, CO	November 10-13, 2021
Montreal, QC	November 9-12, 2022
San Diego, CA	November 15-18, 2023
New Orleans, LA	November 15-18, 2024

Instructions to NARSC Session Participants

1. Please stick to the printed program schedule. Each session has a specific time slot assigned to presentations. If there is a no-show, use the time to discuss previous papers or take a break. Do not rearrange papers to fill gaps in the schedule, as attendees may have specific interests in particular papers.
2. Each breakout room will be equipped with a projector. The Session Chairs is responsible for bringing laptop computers for use by all session presenters. If you are a Session Chair and unable to bring a laptop, kindly communicate with other session participants to ensure that someone in the session brings a laptop. Please note that NARSC will not provide laptops for use in individual sessions.
3. NARSC will have adapters for Apple products at the registration desk, but you must bring your projector adapter.
4. Presenters should save presentations in both PowerPoint and PDF formats. Emailing a copy to themselves ensures a backup.
5. Most sessions have 4 papers. Each paper should be given 30 minutes in total (20-minute presentation, 5-minute discussion, and 5-minute Q&As). If your session has 3 or 5 papers, make sure to distribute the time accordingly.
6. Hold everyone to the time allotted. If a speaker continues after time has expired, rise, ask those present to join you in thanking the speaker, and announce the next presentation. The audience and other speakers will support your decision.
7. Please be considerate of the next session by ensuring your session is completed at the appropriate time, and the meeting room is vacated in time for the next session.
8. Each paper is assigned a discussant to review and offer constructive comments on the paper. There is one discussant for each paper. The discussants for each session are listed in the program in sequential order. The first discussant listed is responsible for discussing the first paper presented; the second discussant listed is responsible for discussing the second paper presented, etc. Some sessions may have allocated their discussants differently.
9. The discussant should come prepared to provide approximately 5 minutes of discussion of the paper. Possible speaking points include its merits and questions' regarding methods, data, or findings – a summary of the paper is neither expected nor appropriate. As a presenter, we ask that you share your paper (or slides) with your discussant as early as possible so that the discussant has sufficient time to review it.

Conference Highlights and Business Meetings

Wednesday, November 15

- Workshop. Spatial Data Analysis and Econometrics with PySAL
8:00 am-5:00 pm | Plaza. **Registration required.**
- Special session. TRSA ABC. Stands AI for “Auctor Intellectualis” or “Artificial Intelligence”? The Potential of AI for Regional Science
10:45 am-3:45 pm | Santa Fe
- NARSC Plenary. RSAI Fellows Lecture
7:00 pm-8:00 pm | San Diego Ballroom
- Icebreaker Reception
8:00 pm-9:00 pm | Garden Terrace

Thursday, November 16

Business meetings

- NARSC Council Meeting (Invitation only).
8:00 am-10:00 am | Del Mar
- RSAI Long Range Planning Committee Meeting (Invitation only)
1:30 pm -3:30 pm | Pacifica
- SEA Business Meeting (Invitation only)
2:30 pm-3:30 pm | Santa Fe
- PRESCO Council Meeting (Invitation only)
4:00 pm-6:00 pm | Pacifica

SEA plenaries

- SEA Plenary. Welcome Address and The Board of Directors' Cut 1
8:00 am-10:00 am | Santa Fe
- SEA Plenary: The Board of Directors' Cut 2.
1:30 pm-2:30 pm | Santa Fe

NARSC plenaries

- NARSC Plenary. Presidential Address.
10:30 am-12:30 pm | California A & B

- NARSC Plenary. Making Regional Planning Work in San Diego/Tijuana: 50 Years of “Temporary Paradise?” and the World Design Capital in 2024. 7:00 pm-8:00 pm | California A & B

Welcome Reception.

8:00 pm-9:00 pm | Garden Terrace

Friday, November 17

Business meetings

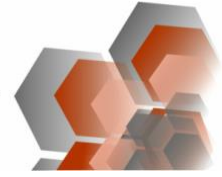
- RSAI Business Meeting (Invitation only)
8:00 am-10:00 pm | Pacifica
- SRSA Council Meeting (Invitation only)
12:30 pm-1:30 pm | Pacifica

Plenaries and special sessions

- SEA Plenary: The Board of Directors' Cuts 3 & 4
8:00 am-10:00 am | Santa Fe
- SEA Plenary: Spatial Econometrics Software Roundtable
1:30 pm-3:30 pm | Santa Fe
- Special session. Papers in Regional Science Lecture
4:00 pm-6:00 pm | Plaza C
- TRSA special academic session. Is the NEG (New Economic Geography) Still Relevant in 2023 for America?
7:55 am – 5:00 pm | La Jolla

Saturday, November 18

- Special session. NARSC Student Paper Competition Presentations
10:30 am-12:30 pm | Santa Fe
- NARSC Award Luncheon
12:30 pm-2:30 pm | California
- Guided Walking Tour: Craft breweries in a LatinX Neighborhood
3:15 pm – 5:15 pm. **Registration required. Space is limited.**



RSAI Fellows Lecture

A Location Analytics Perspective of Regional Science



Speaker: Alan T. Murray, University of California - Santa Barbara
Chair: Sergio Ray, University of California - Riverside

Wednesday, November 15, 7:00 pm-8:00 pm
San Diego Ballroom



THE NORTH AMERICAN REGIONAL SCIENCE COUNCIL

NARSC Presidential Lecture

Reflections on Freight and Metropolitan Spatial Structure



Speaker: Genevieve Giuliano, University of Southern California
Chair: Bruce Newbold, McMaster University

Thursday, November 16, 10:30 am-12:30 pm
California A & B

Papers in Regional Science Annual Lecture

*Broadband Internet Connections
and Rural Development*



Speaker: Elizabeth Mack, Michigan State University
Chair: Rosella Nicolini, Universitat Autònoma de Barcelona

Friday, November 17, 4:00 pm-6:00 pm
Plaza C

Conference Program

Wednesday, November 15

[Workshop] Spatial Data Analysis and Econometrics with PySAL
Wednesday | 8:00 am-5:00 pm | Plaza

Organizers: Pedro Amaral, Universidade Federal de Minas Gerais; Luc Anselin, University of Chicago; Elijah Knapp, University of California – Riverside; Sergio Rey, University of California – Riverside

Registration Required.

Details: <https://www.narsc.org/newsite/wp-content/uploads/2023/05/pysalworkshop.pdf>

1. [The Regional Science Academy (TRSA) Special Session] Advanced Brainstorm Carrefour (ABC) Stands AI for “Auctor Intellectualis” or “Artificial Intelligence”? The Potential of AI for Regional Science
Wednesday | 10:45 am-3:45 pm | Santa Fe
Details on page 19

2. [NARSC Plenary Session] RSAI Fellows Lecture
Wednesday | 7:00 pm-8:00 pm | San Diego Ballroom

- Title: A Location Analytics Perspective of Regional Science
- Speaker: Alan Murray, University of California - Santa Barbara
- Chair: Sergio Rey, University of California – Riverside

3. NARSC Icebreaker Reception
Wednesday | 8:00 pm-9:00 pm | Garden Terrace



1. The Regional Science Academy (TRSA) Special Session
Advanced Brainstorm Carrefour (ABC)
Stands AI for “Auctor Intellectualis” or “Artificial Intelligence”?
The Potential of AI for Regional Science

Wednesday | 10:45 am-3:45 pm | Santa Fe
Online Access: [please click this Zoom link here.](#)
Meeting ID:823 7986 3401; Passcode: 941022

Organizers: Peter Nijkamp, Kingsley Haynes, Neil Reid, Peter Batey, Karima Kourtit

10:45 – 11:00 **Welcome and Introduction to ABC**
Peter Nijkamp, Vice-President of TRSA

11:00 – 12:30 **Session I.** Chair: Kingsley Haynes, George Mason University

- *Thoughts on AI: Past, Present, and the Future.* Rick Church, University of California - Santa Barbara
- *Industrial Composition, Remote Working and Mobility Changes in Canada and the US During the COVID-19 Pandemic: A SHAP Value Analysis of XGBoost Predictions.* Guney Celbis, University of Lyon; Cem Özgüzel, OECD; Karima Kourtit, Open University; Peter Nijkamp, Open University
- *Asking AI to Describe Your Neighborhood - A Source of Bullshit or a Suitable Approach for Data Generation?* John Östh, Oslo Metropolitan University; Umut Turk, Abdullah Gül University; Karima Kourtit, Open University; Peter Nijkamp, Open University

12:30 – 13:30 Lunch

13:30 – 15:30 **Session II.** Chair: Vicente Royuela, University of Barcelona

- *The Potential of Artificial Intelligence in Regional Science.* Patricio Aroca, Universidad Andres Bello
- *Job Satisfaction and the ‘Great Resignation’: An Exploratory Machine Learning Analysis.* Pui-Hang Wong, Maastricht University; Guney Celbis, University of Lyon; Karima Kourtit, Open University; Peter Nijkamp, Open University
- *Artificial Intelligence within Regional Science and Development.* Tomaz Dentinho, University of Azores
- *Regions of Hope and Glory: An AI Experiment Based on Romer’s View on Regional Development.* Peter Nijkamp, Open University; Karima Kourtit, Open University

15:30 – 15:45 **Concluding Words**

Thursday, November 16

4. Promoting Equitable and Accessible Transportation for Healthier and Inclusive Places [NARSC Special Session]

Thursday | 8:00 am-10:00 am | California C

Organizers: Dimitra Pyrialakou, West Virginia University; Lisa L Losada Rojas, The University of New Mexico; Eleni Bardaka, North Carolina State University

Chairs: Lisa L Losada Rojas, The University of New Mexico; Dimitra Pyrialakou, West Virginia University

- *Cycling Accessibility to Employment, Schools, and Grocery Stores in Arizona Metropolitan Regions.* Steven Gehrke, Northern Arizona University
- *Addressing Transportation Disparities through Targeted Investments: A Case Study of Shared Micromobility Programs.* Lauren McCarthy, George Mason University
- *Exploring the Interplay of Perceived and Objective Access to Healthy Opportunities: A Multifaceted Analysis across Diverse Geographies.* Lisa L Losada Rojas, The University of New Mexico, Dimitra Pyrialakou, West Virginia University, Nikhil Menon, Pennsylvania State University - Harrisburg
- *Spatial Analysis of Bike-Sharing Demand and Station Placement: Redefining Bike-Share Planning for Equity.* Sydney French, West Virginia University, Dimitra Pyrialakou, West Virginia University
- *Are Train Stations Equal and Equitable?* Bruce Appleyard, San Diego State University

Discussants:

- Lauren McCarthy, George Mason University
- Lisa L Losada Rojas, The University of New Mexico
- Bruce Appleyard, San Diego State University
- Steven Gehrke, Northern Arizona University
- Dimitra Pyrialakou, West Virginia University

5. Advances in Regional Spending and Household Consumption [NARSC Special Session]

Thursday | 8:00 am-10:00 am | Imperial

Organizers: Kyle Hood, BEA; Mahsa Gholizadeh, BEA

Chair: Christian Awuku-Budu, BEA

- *Developing Quarterly PCE by State Statistics.* Kyle Hood, BEA, Mahsa Gholizadeh, BEA, Jack York, BEA, Steven Zemanek, BEA, Christian Awuku-Budu, BEA

- *The Evolution of U.S. Retail Concentration.* Sergio Ocampo, University of Western Ontario
- *Decomposing the Government Transfer Multiplier.* Bill Dupor, Federal Reserve Bank of St. Louis
- *Consumption Zones.* Andrea Batch, BEA, Benjamin Bridgman, BEA, Abe Dunn, BEA, Mahsa Gholizadeh, BEA
- *Estimating the State-Level Food Expenditure Series.* Eliana Zeballos, USDA Economic Research Service, Wilson Sinclair, USDA Economic Research Service

Discussants:

- Mahsa Gholizadeh, BEA
- Bill Dupor, Federal Reserve Bank of St. Louis
- Eliana Zeballos, USDA Economic Research Service
- Sergio Ocampo, University of Western Ontario
- Kyle Hood, BEA

**6. Food & Beverage Industry 1: Access, Affordability, & Equity [NARSC Special Session]
Thursday | 8:00 am-10:00 am | Plaza A**

Organizers: Neil Reid, University of Toledo; Haoying Wang, New Mexico Tech; Rafael Garduño Rivera, University of Navarra

Chair: Haoying Wang, New Mexico Tech

- *Alcohol Deserts and Hotspots: The Impact of Centrality, Accessibility, and Socio-Economic Sorting in Bar Location Patterns.* Jonathan Wood, University of Manchester
- *Economic Shocks, Food Insufficiency, and Mental Health during the COVID-19 Pandemic.* Yuxuan Pan, Pennsylvania State University, Linlin Fan, Pennsylvania State University, Stephan Goetz, Pennsylvania State University
- *Market Access and Agricultural Land Use: Does Distance Matter? Insights from Colombia.* Andres Garcia, Universidad del Rosario, Ricardo Arguello, Universidad de Ibaguè, Maryury Alzate, Universidad del Rosario, Maria Fernanda Bolivar, Universidad del Rosario

Discussants:

- Yuxuan Pan, Pennsylvania State University
- Ricardo Arguello, Universidad de Ibaguè
- Jonathan Wood, University of Manchester

7. Regional/Rural Development I [NARSC Special Session]
Thursday | 8:00 am-10:00 am | Sierra B

Organizers: Sarah Low, University of Illinois - Urbana-Champaign; Tim Komarek, Colorado State University; Stephan Weiler, Colorado State University

Chair: Thomas Harris, University of Nevada, Reno

- *Economic Targeting for White Pine County, Nevada: Combining Cluster and Area Sector Analysis Process Procedures.* [Thomas Harris, University of Nevada, Reno](#)
- *Decomposing the Urban-Rural Export Gap: Evidence from US Firms.* [Luyi Han, Pennsylvania State University](#), Timothy Wojan, National Science Foundation, Zheng Tian, Pennsylvania State University, Stephan Goetz, Pennsylvania State University
- *Evaluating Drought Regional Resilience and Impacts – Data and Model Considerations.* [David Fleming Munoz, CSIRO](#)
- *Estimating Regional Inflation: A Quantity Theory Approach.* [Luke Petach, Belmont University](#)
- *Developing Statistics on the Distribution of State Personal Income.* [Dirk van Duym, BEA](#)

Discussants:

- Luke Petach, Belmont University
- David Fleming Munoz, CSIRO
- Luyi Han, Pennsylvania State University
- Dirk van Duym, BEA
- Thomas Harris, University of Nevada, Reno

8. [SEA Plenary Session] Spatial Econometrics Association Welcome Address & The Board of Directors' Cut 1: Peter Egger with B. Baltagi and M. Kesina
Thursday | 8:00 am-10:00 am | Santa Fe

GMM-estimation of Panel Data Models with a Component-specific Higher-order Network Structure

9. NARSC Council Meeting (Invitation only)
Thursday | 8:00 am-10:00 am | Del Mar

10. Examining Innovation in Regional Economic Development Thursday | 8:00 am-10:00 am | La Jolla

Chair: Zheng Tian, Pennsylvania State University

- *Examining Rural-Urban Innovation Disparities: A Study Using the Oaxaca-Blinder Decomposition Method.* Luyi Han, Pennsylvania State University, Timothy Wojan, National Science Foundation, [Zheng Tian, Pennsylvania State University](#), Stephan Goetz, Pennsylvania State University
- *Foreign Direct Investment Spatial Spillovers and Regional Innovation in China: The Moderating Role of Absorptive Capacity.* Yuxue Sheng, Guangxi University, [Yao-Yu Chih, Texas State University](#)
- *Kickstarting Regional Diversification?* [Nicola Cortinovis, Utrecht University](#)

Discussants:

- Yao-Yu Chih, Texas State University
- Nicola Cortinovis, Utrecht University
- Zheng Tian, Pennsylvania State University

11. Regional Governance Structure Thursday | 8:00 am-10:00 am | Plaza B

Chair: Tobias Albrecht, Universitat de Barcelona

- *Centralized versus Decentralized Cleanup of River Water Pollution: An Application to the Ganges.* [Amit Batabyal, Rochester Institute of Technology](#); Hamid Beladi, University of Texas at San Antonio
- *Be Careful What You Wish For: The Risks and Rewards of Regional Devolution.* [Kevin Connolly, Strathclyde University](#); Peter McGregor, Strathclyde University; Swales Kim, Strathclyde University; Graeme Roy, University of Glasgow
- *Supranational Funds for Cities and Regional Autonomy.* [Chiara F. Del Bo, Università degli Studi di Milano](#)
- *On the Subtle Effect of Governmental Decentralization on the Generation of Renewable Electricity.* [Tobias Albrecht, Universitat de Barcelona](#); Enrique López-Bazo, Universitat de Barcelona; Mònica Serrano, Universitat de Barcelona

Discussants:

- Kevin Connolly, Strathclyde University
- Chiara F. Del Bo, Università degli Studi di Milano
- Tobias Albrecht, Universitat de Barcelona
- Amit Batabyal, Rochester Institute of Technology

12. Local and Regional Politics and Political Institutions

Thursday | 8:00 am-10:00 am | Plaza C

Chair: Arief Gusnanto, Leeds University

- *Clearing The Smog Ceiling: The Impact of Women's Political Empowerment on Air Quality in European Regions.* Vicente Rios, University of Pisa, Izaskun Barba, Public University of Navarre, Lisa Gianmoena, University of Pisa, Pedro Pascual, Public University of Navarre
- *The Spatial Dynamics of Trust: The Rally-Round-The-Flag Effect in Post-Blast Beirut.* Elisabetta Pietrostefani, University of Liverpool
- *Predicting Corrupted Indonesian Local Government: A Machine Learning Approach.* Khoirunurrofik Khoirunurrofik, University of Indonesia, Arief Gusnanto, Leeds University
- *The Effects of Corruption on Regional Competitiveness and Voting Behavior.* Florian Bartholomae, Munich Business School, Alina Schoenberg, IMC University of Applied Sciences Krems

Discussants:

- Elisabetta Pietrostefani, University of Liverpool
- Khoirunurrofik Khoirunurrofik, University of Indonesia
- Florian Bartholomae, Munich Business School
- Izaskun Barba, Public University of Navarre

13. Public Finance

Thursday | 8:00 am-10:00 am | Sierra A

Chair: Patricio Aroca, Universidad Andres Bello

- *Designing Effective Horizontal Transfers to Promote Welfare: The Case of Chile.* Dusan Paredes, Universidad Catolica del Norte, Sebastian Cuellar, Universidad Catolica del Norte, Alicia Chávez, Universidad Catolica del Norte
- *Regional Effects of Tax Reform in Brazil: A Computable General Equilibrium Approach.* Joao Gabriel Sacco, University of São Paulo, Eduardo Haddad, University of São Paulo
- *A Spatial Approach to Identifying Gatekeepers in The Territorial Allocation of Public Funds in Chile.* Patricio Aroca, Universidad Andres Bello, Pedro Fierro, Universidad Adolfo Ibañez
- *Public Capital, Endogenous Economic Growth, and Dynamics of the Economy: Sustainability of Public Debt Financing and Long-run Income Distribution.* Yasuyuki Nishigaki, Ryukoku University, Ling Ling Sun, Ningbo City College of Vocational Technology

Discussants:

- Joao Gabriel Sacco, University of São Paulo
- Patricio Aroca, Universidad Andres Bello
- Ling Ling Sun, Ningbo City College of Vocational Technology
- Dusan Paredes, Universidad Catolica del Norte

===== Coffee Break =====
10:00 am-10:30 am | Santa Fe Foyer

14. [SEA Concurrent Session] Environmental and Health Applications
Thursday | 10:30 am-12:30 pm | Imperial

- Exploring the Drivers of Increased US Cover Crop Adoption. Kazi Ullah, Oak Ridge National Laboratory, Esther Parish, Oak Ridge National Laboratory
- Nightlight, Landcover and Buildings: Understanding Intracity Socioeconomic Differences. Andres Garcia, Universidad del Rosario, Daniela Varela, Bank of Italy
- Spatial Dynamics of Urbanization and Environmental Sustainability in Europe: A Spatial Panel Analysis. Andreea Matyas, Babes-Bolyai University, Codruta Mare, Babes-Bolyai University

15. [SEA Concurrent Session] Spatial Interaction Models and Visualization
Thursday | 10:30 am-12:30 pm | Santa Fe

Organizer: Christine Thomas-Agnan, Toulouse School of Economics

Chair: Christine Thomas-Agnan, Toulouse School of Economics

- Spatial Econometric Modeling of Public Transport with the R Package Spflow. Lukas Dargel, Toulouse School of Economics
- International Mobility and Environmental Factors. Thibault Laurent, Toulouse School of Economics, Paula Margaretic, University Adolfo Ibañez, Christine Thomas-Agnan, Toulouse School of Economics
- Visualizing Migration Data with R. Thibault Laurent, Toulouse School of Economics, Paula Margaretic, University Adolfo Ibañez

Discussants:

- Paul Elhorst, University of Groningen
- Paula Margaretic, University Adolfo Ibañez
- Lukas Dargel, Toulouse School of Economics

16. [NARSC Plenary Session] The NARSC Presidential Address
Thursday | 10:30 am-12:30 pm | California A & B

- Title: Reflections on Freight and Metropolitan Spatial Structure
- Speaker: Genevieve Giuliano, University of Southern California
- Chair: Bruce Newbold, McMaster University

===== Lunch on Your Own =====
12:30 pm-1:30 pm

12:30 pm -1:30 NARSC X YSI Informal Young Scholars' Networking Lunch

This lunch is exclusively for graduate students and early career scholars. It is funded by the Regional and Economics Working Group (URE-WG) within [the Young Scholars Initiative](#) of the Institute for New Economic Thinking (YSI/INET).

Details are to be announced via email.

17. Viable, Resilient, and Sustainable Transportation Planning in Post-Conflict Zones
[NARSC Special Session]

Thursday | 1:30 pm-3:30 pm | Imperial

Organizer: Adam Rose, University of Southern California

Chair: Adam Rose, University of Southern California

- Intersecting Market Participant Objectives in Seaport Investments for Post-Conflict Economies. Terry Clower, George Mason University; Laurie Schintler, George Mason University; Sue Dexter, University of Southern California; Keith Waters, George Mason University; Camilla Bosanquet, George Mason University
- Differential Spatial Price Equilibrium. Terry Friesz, Pennsylvania State University
- Assembling and Solving a Dynamic Spatial Computable General Equilibrium Model in EMP to Study Logistics Systems Reconstruction in Post-conflict Zones. Kieran Donaghy, Cornell University, Michael Ferris, University of Wisconsin - Madison, Terry Friesz, Pennsylvania State University
- An Expert Elicitation Process for Analyzing Decisions for Transportation Infrastructure Development in Post-Conflict Zones. Richard John, University of Southern California; Adam Rose, University of Southern California; Denton Cohen, University of Southern California

Discussants:

- Eli Berman, University of California - San Diego.
- Peter Nijkamp, Open University, Heerlen, The Netherlands

18. Food & Beverage Industry 2: Technology [NARSC Special Session]
Thursday | 1:30 pm-3:30 pm | Plaza A

Organizers: Neil Reid, University of Toledo; Haoying Wang, New Mexico Tech; Rafael Garduño Rivera, University of Navarra

Chair: Rafael Garduño Rivera, University of Navarra

- *Access to Food in Physical and Hybrid Space: Web Scraping Online Delivery Service Platforms.* Jaehyun Ha, University of Southern California
- *Meal Delivery and Restaurant Industry Activity.* Carlos Azzoni, University of Sao Paulo
- *Impacts of Online Grocery Delivery on Supermarket Locational Dynamics and Vulnerable Populations' Accessibility: A Case Study of South Korea.* Donghyun Kim, Hanyang University, Jin A Park, Hanyang University
- *Competitiveness of Agricultural Value Chains and Regional Sustainable Development in a Digital World – The Case of Mozambique.* Tomaz Dentinho, University of Azores, Ines Cuambe, Government Institute for Economic Research

Discussants:

- Carlos Azzoni, University of Sao Paulo
- Donghyun Kim, Hanyang University
- Tomaz Dentinho, University of Azores
- Jaehyun Ha, University of Southern California

19. Machine Learning in Regional Science: Perspectives, Methods, and Applications [NARSC Special Session]
Thursday | 1:30 pm-3:30 pm | Plaza C

Organizers: Kevin Credit, Maynooth University; Isabelle Nilsson, University of North Carolina - Charlotte

Chair: David Folch, Northern Arizona University

- *Validity of Cross-Validation Methods in Spatial Settings: Case Study of Housing Prices in Rawalpindi and Islamabad Metropolitan Area, Pakistan.* Usman Ahmed, University of Toronto, Jason Hawkins, University of Nebraska - Lincoln
- *Homeowner Politics and Housing Supply.* Limin Fang, University of British Columbia, Nathan Stewart, University of Toronto, Justin Tyndall, University of Hawaii - Manoa
- *Understanding Processes of Neighborhood Change using Property Text Analytics I: Creating Neighborhood Typologies from Mortgage Applicant Data.* Elizabeth Delmelle, University of Pennsylvania, Isabelle Nilsson, University of North Carolina - Charlotte
- *Understanding Processes of Neighborhood Change using Property Text Analytics II: Analyzing Public Remarks Across Time and Space.* Isabelle Nilsson, University of North Carolina - Charlotte, Elizabeth Delmelle, University of Pennsylvania

- *Spatial Patterns of Backcountry Recreation Activity.* David Folch, Northern Arizona University, Vincent Sutherland, Northern Arizona University

Discussants:

- Justin Tyndall, University of Hawaii - Manoa
- Elizabeth Delmelle, University of Pennsylvania
- David Folch, Northern Arizona University
- Usman Ahmed, University of Toronto
- Isabelle Nilsson, University of North Carolina - Charlotte

20. Regional Science, Climate Change, Environmental Footprint 1 [NARSC Special Session]

Thursday | 1:30 pm-3:30 pm | Sierra A

Organizers: Sandy Dall'erba, University of Illinois - Urbana-Champaign; Alberto Solis, National Renewable Energy Laboratory; Chen Zhenhua, Ohio State University; Andre Fernandes Tomon Avelino, National Renewable Energy Laboratory

Chair: Sandy Dall'erba, University of Illinois - Urbana-Champaign

- *Estimating the Nonlinear Impact of Climate Change on the US Agricultural Inland Waterway Transportation through Machine-Learning.* Chen Zhenhua, Ohio State University, Zekun Li, Ohio State University
- *Difference-in-Differences with Endogenous Externalities: Model and Application to Drought Impact.* Sandy Dall'erba, University of Illinois - Urbana-Champaign, André Chagas, University of São Paulo, William Ridley, University of Illinois - Urbana-Champaign, Yilan Xu, University of Illinois - Urbana-Champaign, Lilin Yuan, Nankai University
- *Flying Blind into the Fifth Industrial Revolution (Decarbonization)? The 2023 Annual Business Survey May Be Able to Help.* Timothy Wojan, National Science Foundation
- *Transportation Disruptions in the U.S. Domestic Food Supply Chain.* Taejun Mo, University of Illinois - Urbana-Champaign, Sandy Dall'erba, University of Illinois - Urbana-Champaign

Discussants:

- Sandy Dall'erba, University of Illinois - Urbana-Champaign
- Chen Zhenhua, Ohio State University
- Taejun Mo, University of Illinois - Urbana-Champaign
- Timothy Wojan, National Science Foundation

21. Regional/Rural Development II [NARSC Special Session]
Thursday | 1:30 pm-3:30 pm | Sierra B

Organizers: Sarah Low, University of Illinois - Urbana-Champaign; Tim Komarek, Colorado State University; Stephan Weiler, Colorado State University

Chair: John Pender, USDA Economic Research Service

- *A Regional Investigation of Declining Labor Share.* Gregory Miller, Colorado State University
- *The Effect of SNAP-Ed on Labor Market and Health Outcomes: Evidence from Nine US States.* Thomas Keene, Michigan State University, Craig Carpenter, Michigan State University
- *Ethiopia's Energy Transition: The Story of Rural Households.* Hazel Lee, Cornell University
- *Analysis of The Income Effect By The Digital Divide - Focus on Rural Areas of Korea.* Tongjoo Suh, Pusan National University, Brian H.S. Kim, Seoul National University

Discussants:

- Peter Orazem, Iowa State University
- Tongjoo Suh, Pusan National University
- Thomas Keene, Michigan State University
- Hazel Lee, Cornell University

22. [SEA Plenary Session] The Board of Directors' Cut 2: Luc Anselin & Members' Business Meeting
Thursday | 1:30 pm-3:30 pm | Santa Fe

Spatial Econometric Model Specification Search: Another Look. Luc Anselin, University of Chicago, Pedro Amaral, Universidade Federal de Minas Gerais, Renan Serenini, La Sapienza University of Rome

23. Social Aspects of Migration: Culture, Language, and Childhood
Thursday | 1:30 pm-3:30 pm | California A

Chair: Xiuxiang Pan, Groningen University

- *Territorial Effects Between Natives and Immigrants: Discrimination and Cultural Cleavage in Barcelona.* Rosella Nicolini, Universitat Autònoma de Barcelona, Juan A. Piedra Peña, UAB & INRAE/Institut Agro Dijon, José Luis Roig Sabaté, Universitat Autònoma de Barcelona, Riccardo Turati, UAB

- *Are Linguistic Policies a Barrier to Interregional Migrations? A Case of Study in Catalonia.* Vicente Royuela, University of Barcelona, Antonio di Paolo, University of Barcelona, Raul Ramos, University of Barcelona
- *Intensify or Weaken? A Study on the Impact of Childhood Migration Experience on Subsequent Migration Intensity in Adulthood.* Xiuxiang Pan, Groningen University, Sierdjan Koster, Groningen University, Dimitris Ballas, Groningen University, Daniele Mantegazzi, Groningen University

Discussants:

- Rosella Nicolini, Universitat Autònoma de Barcelona
- Vicente Royuela, University of Barcelona
- Xiuxiang Pan, Groningen University

24. Internal Migration: Causes and Consequences

Thursday | 1:30 pm-3:30 pm | California B

Chair: Steven Bond-Smith, University of Hawaii – Manoa

- *Machine Learning Approaches for Modeling Population Migration in Response to Population Decline.* Daeyoung Kwon, University of Nevada - Las Vegas, Sangwon Choi, Seoul National University, Brian H.S. Kim, Seoul National University
- *Migration Efficiency: Measurement and Application to the US Migration System.* Peter Rogerson, Arizona State University
- *Individual Preferences, Jobs, Or Amenities? Understanding The Destination Choices of Highly and Less Skilled Migrants in Urban China.* Yu Wang, Rutgers University, Sainan Lin, Wuhan University
- *A Possible Diverse Economic Geography of Talent? Counterflow of Students' Migration in Italy.* Martina Dal Molin, Gran Sasso Science Institute, Fabiano Compagnucci, Gran Sasso Science Institute, Giulia Urso, Gran Sasso Science Institute
- *The Effect of Internal Migration on Productivity: Evidence from Vietnam.* Steven Bond-Smith, University of Hawaii - Manoa, Toan Nguyen, Australian National University, Duy-Anh Phan, Monash University

Discussants:

- Peter Rogerson, Arizona State University
- Yu Wang, Rutgers University
- Martina Dal Molin, Gran Sasso Science Institute
- Steven Bond-Smith, University of Hawaii - Manoa
- Sangwon Choi, Seoul National University

25. Historical Pathways of Regional Economies

Thursday | 1:30 pm-3:30 pm | California C

Chair: John Gibson, University of Waikato

- *Old but Gold: Long-Run Effects of Historical Pathways on Economic Activity.* Diogo Baerlocher, University of South Florida, Diego Firmino Costa da Silva, Universidade Federal Rural de Pernambuco, Guilherme Lambais, University of Lisbon, Eustáquio Reis, Instituto de Pesquisa Economica Aplicada, Henrique Veras, Centre College
- *Economic Growth and Religious Diversity: Total and Evangelical-Pentecostal.* Suzana Quinet Bastos, Federal University of Juiz de Fora, Sandro de Freitas Ferreira, Federal University of Juiz de Fora, Livia Lourenço de Souza, UFJF
- *An Exploratory Analysis of Cultural Distance between Regions of New Zealand.* Michael Cameron, University of Waikato, Mikaela Paradizo Medina, University of Waikato
- *A Model of Economic Growth in China.* Takatoshi Tabuchi, Chuo University, Congcong Wang, Zhejiang University, Xiwei Zhu, Zhejiang University
- *China's Declining Agglomeration Elasticities.* Chao Li, University of Auckland, John Gibson, University of Waikato

Discussants:

- Suzana Quinet Bastos, Federal University of Juiz de Fora
- Michael Cameron, University of Waikato
- Takatoshi Tabuchi, Chuo University
- John Gibson, University of Waikato
- Diego Firmino Costa da Silva, Universidade Federal Rural de Pernambuco

26. Fiscal and Monetary Policies for Disaster Recovery

Thursday | 1:30 pm-3:30 pm | Del Mar

Chair: Jiakai Zhang, New Mexico Institute of Mining and Technology

- *Effectiveness of Government Transfers in Mitigating Job Losses After Hurricanes in U.S. Counties.* Jiakai Zhang, New Mexico Institute of Mining and Technology, Zheng Tian, Pennsylvania State University, Yong Chen, Oregon State University
- *Assessing The Economic Losses of Destructive Events: An Analytical Framework Combining Production and Consumption Perspectives.* Ran Xu, Qingdao University of Technology, Xiang Gao, Chinese Academy of Sciences, Qin Bao, Chinese Academy of Sciences, Cuihong Yang, Chinese Academy of Sciences
- *Opportunistic Investment: The Political Economy Impacts of FEMA Hurricane Declarations.* Amir Ferreira Neto, Florida Gulf Coast University, Rushaine Goulbourne, Freddie Mac, Amanda Ross, University of Alabama
- *Modeling the Macroeconomic Consequences of Natural Disasters: Capital Stock, Recovery Dynamics, and Monetary Policy.* Stephane Hallegatte, World Bank, Charl Jooste, World Bank, Florent Mclsaac, World Bank

Discussants:

- Xiang Gao, Chinese Academy of Sciences
- Amanda Ross, University of Alabama
- Florent Mclsaac, World Bank
- Jiakai Zhang, New Mexico Institute of Mining and Technology

27. Resource-Driven Regional Economies

Thursday | 1:30 pm-3:30 pm | La Jolla

Chair: Christina Gore, National Institute of Standards and Technology

- *Estimating the Economic Impacts of Power Generation and Biofuel Plants: The Workforce Impacts and Regional Economic Development (WIRED) Model.* Andre Fernandes Tomon Avelino, National Renewable Energy Laboratory, Alberto Solis, National Renewable Energy Lab, Yimin Zhang, National Renewable Energy Laboratory
- *Evaluating The Long-Term Regional Impacts of A Resources Boom.* David Fleming Munoz, CSIRO
- *Royalties and Regional Disparities in Colombia.* Jaime Bonet, Banco de la República, Javier Perez, Banco de la Republica (The Central Bank of Colombia), Eduardo Haddad, University of São Paulo
- *The Economic Impact of Coal Mining Jobs Disappearing in Appalachia.* Christina Gore, National Institute of Standards and Technology

Discussants:

- David Fleming Munoz, CSIRO
- Jaime Bonet, Banco de la República
- Christina Gore, National Institute of Standards and Technology
- Andre Fernandes Tomon Avelino, National Renewable Energy Laboratory

28. RSAI Long Range Planning Committee Meeting (Invitation only)

Thursday | 1:30 pm-3:30 pm | Pacifica

29. Gentrification

Thursday | 1:30 pm-3:30 pm | Plaza B

Chair: Seohee Kim, Duke University

- *On Gentrification: Renovations of Rental Housing and Socio-Economic Sorting.* Matz Dahlberg, Uppsala University, Per-Anders Edin, Uppsala University, Majken Stenberg, Uppsala University

- *Teardowns, Renovations, and Their Impacts on Housing Supply and Gentrification.* Seohee Kim, Duke University
- *Walk with me: Exploring the Role of Pedestrianization on The Gentrification of Nearby Neighbourhood.* Marie-Pier Champagne, Laval University, Jean Dube, Universite Laval, Diego Legros, Universite de Bourgogne
- *A Policy Perspective on Green Gentrification and Environmental Justice.* Soomi Lee, University of La Verne

Discussants:

- Seohee Kim, Duke University
- Soomi Lee, University of La Verne
- Marie-Pier Champagne, Laval University
- Matz Dahlberg, Uppsala University

===== **Coffee Break** =====
3:30 pm-4:00 pm | Santa Fe Foyer

30. Food & Beverage Industry 3: Trade, Value Chains, Clusters, & Pricing [NARSC Special Session]

Thursday | 4:00 pm-6:00 pm | Plaza A

Organizers: Neil Reid, University of Toledo; Haoying Wang, New Mexico Tech; Rafael Garduño Rivera, University of Navarra

Chair: Neil Reid, University of Toledo

- *Economic Geography of Beer Production in the Context of Trade Liberalization and Economic Nationalism: The Mexican Experience.* Haoying Wang, New Mexico Tech, Neil Reid, University of Toledo, Rafael Garduño Rivera, University of Navarra
- *Scale of Farming Operations Influences Challenges Faced by Organic Agriculturists in California.* Shriya Rangarajan, University of California - Riverside, Houston Wilson, University of California - Riverside, Mark Lubell, University of California - Davis
- *“Where’s the Beef?”: Beef Production Clusters and County-Level Economic Vulnerability.* Bonnie Bounds, Auburn University
- *Changes in State Minimum Wage and the Price of Food Away from Home.* Fernanda Alfaro, Michigan State University, Scott Loveridge, Michigan State University, Mark Skidmore, Michigan State University, Dusan Paredes, Universidad Catolica del Norte

Discussants:

- Shriya Rangarajan, University of California - Riverside
- Bonnie Bounds, Auburn University
- Fernanda Alfaro, Michigan State University
- Haoying Wang, New Mexico Tech

31. Regional Science, Climate Change, Environmental Footprint 2 [NARSC Special Session]

Thursday | 4:00 pm-6:00 pm | Sierra A

Organizers: Sandy Dall'erba, University of Illinois - Urbana-Champaign; Alberto Solis, National Renewable Energy Laboratory; Andre Fernandes Tomon Avelino, National Renewable Energy Laboratory; Chen Zhenhua, Ohio State University

Chair: Alberto Solis, National Renewable Energy Laboratory

- *The U.S. Economy as a Network: Comparison Across Economic and Environmental Metrics.* Jason Hawkins, University of Nebraska - Lincoln, Sagun Karki, University of Nebraska - Lincoln
- *Tracing County-to-County Domestic Trade Flows in Grains.* William Ridley, University of Illinois - Urbana-Champaign, Sandy Dall'erba, University of Illinois - Urbana-Champaign, Jian Zou, University of Illinois - Urbana-Champaign, Youning Chen, University of Illinois - Urbana-Champaign, Noe Nava, USDA Economic Research Service
- *Climate Adaptation, Migration, and Affordable Housing.* Sowon Kim, Ohio State University
- *Economic, Environmental and Workforce Impacts of Sustainable Aviation Fuel Production.* Andre Fernandes Tomon Avelino, National Renewable Energy Laboratory, Yimin Zhang, National Renewable Energy Laboratory, Greg Avery, National Renewable Energy Laboratory, Mengming Li, University of Florida, Alberto Solis, National Renewable Energy Laboratory

Discussants:

- Alberto Solis, National Renewable Energy Laboratory
- Jason Hawkins, University of Nebraska - Lincoln
- Andre Fernandes Tomon Avelino, National Renewable Energy Laboratory
- Sowon Kim, Ohio State University

32. Regional/Rural Development III [NARSC Special Session]

Thursday | 4:00 pm-6:00 pm | Sierra B

Organizers: Sarah Low, University of Illinois - Urbana-Champaign; Tim Komarek, Colorado State University; Stephan Weiler, Colorado State University

Chair: Elizabeth Dobis, USDA Economic Research Service

- *Trade Liberalization and Mortality Rates: Evidence of Pro-Cyclical Mortality from Brazil.* Vinicius Cicero, Colorado State University, Lucas Dias, FGV - EESP, Sammy Zahran, Colorado State University

- *Growing Old in Rural America: Measuring Late Life Health and Economic Well-being.* Sayorn Chin, Lafayette College, Ray Miller, Colorado State University, Yuulin An, Colorado State University
- *Changes in Rural Health Care Access, 2000-18.* Elizabeth Dobis, USDA Economic Research Service
- *Energy Burden Disparity: Comparing Rural and Urban Areas in the U.S.* Ayoung Kim, Mississippi State University, Seong Yun, Mississippi State University

Discussants:

- Elizabeth Dobis, USDA Economic Research Service
- Amanda Weinstein, University of Akron
- Vinicius Cicero, Colorado State University
- Sayorn Chin, Lafayette College

33. [SEA Concurrent Session 4] Economic Applications

Thursday | 4:00 pm-6:00 pm | Imperial

- *Evaluation of The Space-Time Effects of Covid-19 on Loans and Savings in Romania.* Stefana Belbe, Babes-Bolyai University, Codruta Mare, Babes-Bolyai University, Darie Moldovan, Babes-Bolyai University, Alin Andries, Alexandru Ioan Cuza University
- *Network Structures and Economic Behaviors.* Chih-Sheng Hsieh, National Taiwan University, Xu Lin, Virginia Tech
- *Fiscal Sustainability and Size of Brazilian Municipalities: A Spatial Probit Analysis.* Julia Dias, Cedeplar/UFMG, Pedro Amaral, Cedeplar/UFMG

34. [SEA Concurrent Session 3] W Matrices, Networks and Neighbourhoods

Thursday | 4:00 pm-6:00 pm | Santa Fe

- *Testing Endogeneity of a Spatial Weight Matrix in a Weak Spatial Dynamic Panel Data Model with Parametric Misspecification.* Jieun Lee, Emory University
- *Parameterizing Spatial Weight Matrices in Spatial Econometric Models.* Paul Elhorst, University of Groningen
- *GeoGraphs for spatially embedded networks.* Sergio Rey, San Diego State University, Elijah Knaap, San Diego State University, Zachary Neal, Michigan State University, Clio Andris, Georgia Institute of Technology
- *Spatial Econometrics for Developers' Strategic Interactions in Government Land Auctions.* Yilan Luo, Hunan University, Wen-Chi Liao, Massachusetts Institute of Technology

35. Dynamics of Inter-regional Human Mobility Thursday | 4:00 pm-6:00 pm | California A

Chair: Andre Comandon, University of Southern California

- *Urbanization and slums: evidence from Ecuador.* Alessia Matano, University of Rome La Sapienza, Moisés Obaco, Universidad Católica del Norte, Vicente Royuela, University of Barcelona
- *Addressing Demographic Decline and Regional Disparities in Developing Economies: Lessons from Urbanisation Trends.* Marija Dzunic, University of Niš, Faculty of Economics, John Osth, Oslo Metropolitan University, Oslo, Norway, Jelena Stanković, University of Niš, Faculty of Economics, Vesna Jankovic Milic, University of Niš, Faculty of Economics, Simona Muratori, Poliedra, Politecnico di Milano, Milan, Italy
- *Migration, Reference-Dependency, Income Distribution, and Its Stability.* Kiyoshi Yonemoto, Takasaki City University of Economics
- *Analyzing City Attractiveness and Interaction through Intercity Human Mobility Network Analysis.* Tao Yuan, China University of Geosciences, Dongmei Chen, Queen`s University
- *Leaving Gentrification Behind? The Geography of Moves in the San Francisco Bay Area.* Andre Comandon, University of Southern California, Seva Rodnyansky, Occidental College, Marlon Boarnet, University of Southern California

Discussants:

- Marija Dzunic, University of Niš, Faculty of Economics
- Kiyoshi Yonemoto, Takasaki City University of Economics
- Dongmei Chen, Queen`s University
- Andre Comandon, University of Southern California
- Vicente Royuela, University of Barcelona

36. Immigration and Labor Market Thursday | 4:00 pm-6:00 pm | California B

Chair: Carlos Mesa-Guerra, Cornell University

- *Immigrant Networks in the Labor Market.* Carlos Mesa-Guerra, Cornell University
- *Job Displacement and Labor Outcomes of Immigrants.* Orsa Kekezi, Stockholm University, Johan Klaesson, Jönköping International Business School, Sofia Wixe, Jonkoping International Business School
- *Immigration, Imports, and (Im)mutable Japanese Labor Markets.* Akira Sasahara, Keio University, Yumin Sui, Keio University, Emily Taguchi, University of Cologne
- *Reasons To Emigrate and The Propensity to Send Remittances: An Analysis by Gender and Migratory Regions of Mexico.* Lidia Carvajal, Universidad Autonoma del Estado de Mexico, Miguel Angel Mendoza, Universidad Nacional Autónoma de México

Discussants:

- Orsa Kekezi, Stockholm University
- Akira Sasahara, Keio University
- Lidia Carvajal, Universidad Autonoma del Estado de Mexico
- Carlos Mesa-Guerra, Cornell University

37. Entrepreneurial Ecosystem

Thursday | 4:00 pm-6:00 pm | California C

Chair: Haifeng Qian, University of Iowa

- *Entrepreneurial Ecosystems, Local Labor Supply and New Firm Growth.* Udo Brixy, Institute of Employment Research (IAB), Lisa Bellmann, Institute of Employment Research (IAB)
- *The Variety of High-tech Entrepreneurship Ecosystems in the United States.* Georgios Fotopoulos, University of Peloponnese, Haifeng Qian, University of Iowa
- *The Cascadia Innovation Corridor: The Role of Social Entrepreneurship in the Making of a Resilient North American High Tech Cross Border Region.* Kathrine Richardson, San Jose State University
- *Trailing Your Parents' Footsteps - Occupational Following of The Self-Employed in The Regional Context.* Franziska Bay, University of Groningen

Discussants:

- Haifeng Qian, University of Iowa
- Kathrine Richardson, San Jose State University
- Franziska Bay, University of Groningen
- Udo Brixy, Institute of Employment Research (IAB)

38. Social Capital and Community Resilience

Thursday | 4:00 pm-6:00 pm | Del Mar

Chair: Marina Manganaris, George Mason University

- *Community Resilience with Mutual Assistance and Social Capital.* Kiyomi Kawamoto, Toyo University, Masafumi Morisugi, Meijo University, Eric Yamashita, University of Hawaii - Manoa
- *Compliance and The Social Space of Cities and Suburbs: The Covid-19 Regulations and Communities' Capital Forms.* Emil Israel, Technion - Israel Institute of Technology, Tal Feder, Technion - Israel Institute of Technology
- *What's in a Plan? A Textual Analysis of Community Resilience and Climate Action Plans in New York City.* Marina Manganaris, George Mason University, Shriya Rangarajan, University of California - Riverside, Yaxuan Wen, Brandeis University

- *Making the Invisible Visible: An Analysis of Social Network Creation and Usage between Public Housing Units and Local Businesses Before, During, and After COVID-19 Regulations across Major U.S Cities.* Karina Amalbert, Florida State University, Kerry Fang, Florida State University

Discussants:

- Emil Israel, Technion - Israel Institute of Technology
- Marina Manganaris, George Mason University
- Karina Amalbert, Florida State University
- Kiyomi Kawamoto, Toyo University

39. Transportation, Connectivity, and Regional Development
Thursday | 4:00 pm-6:00 pm | La Jolla

Chair: Rafael González-Val, Universidad de Zaragoza

- *Railroad Expansion, Local Opportunities and Geographic Mobility: Evidence from Nineteenth Century America.* Maxence Castiello, Pantheon-Sorbonne Paris I
- *High-Speed Rail and Spatial Spillover Effects of University R&D in China.* Yun li, Ohio State University
- *Productivity Benefits of Transport Investments: Wage and Real Estate Evidence from The Northeast Corridor.* Jung Bae, KPMG, Kerda Varaku, KPMG, Kristina Kohl, KPMG, Lucile Kellis, KPMG, Pierre Vilain, KPMG
- *Broadband and Growth in The Spanish Municipalities.* Rafael González-Val, Universidad de Zaragoza

Discussants:

- Jung Bae, KPMG
- Yun li, Ohio State University
- Rafael González-Val, Universidad de Zaragoza
- Maxence Castiello, Pantheon-Sorbonne Paris I

40. PRESCO Council Meeting (Invitation only)
Thursday | 4:00 pm-6:00 pm | Pacifica

41. Urban Green Space: Stakeholders, Attitudes, and Behaviors
Thursday | 4:00 pm-6:00 pm | Plaza B

Chair: Eunah Jung, Cornell University

- *Do Real Estate Developers Benefit from Preserving Forest and Green Spaces in New Developments?* Jean Dube, Universite Laval, Mohamed Hilal, Institut Agro Dijon, Julie Le Gallo, Institut Agro Dijon, Capucine Chapel, Institut Agro Dijon

- *The Impact of Homeowner Associations (HOAs) on Tree Canopy Distribution in Urban Desert Biome.* Aaron Colletta, University of Nevada - Las Vegas, Jaewon Lim, University of Nevada - Las Vegas
- *A Spatial Microsimulation and Agent-Based Modelling Approach To The Analysis of 'Green' Citizenship Social Attitudes and Behaviours.* Loes Bouman, University of Groningen, Dimitris Ballas, Groningen University, Wander Jager, Groningen University
- *Community Engagement GIS for Sustainability of Urban Green Spaces at UT Dallas: A Web-Mapping Tool Integrated with Deep Learning for Tree Analysis.* Changho Lee, University of Texas - Dallas, Nayeon Kim, University of Texas - Dallas
- *Green Spaces for Whom? A Latent Profile Analysis of Park-Rich Or -Deprived Neighborhoods in New York City.* Eunah Jung, Cornell University

Discussants:

- Aaron Colletta, University of Nevada - Las Vegas
- Dimitris Ballas, Groningen University
- Changho Lee, University of Texas - Dallas
- Eunah Jung, Cornell University
- Jean Dube, Universite Laval

42. Property Taxes: Housing Price, Foreclosure, and Neighborhood Change
Thursday | 4:00 pm-6:00 pm | Plaza C

Chair: Timothy Hodge, Oakland University

- *Property Tax Limitations and Housing Prices.* Zach Keeler, Texas Tech University, Michael Cary, Virginia Tech, Heather Stephens, West Virginia University
- *Tax Revolt and Neighborhood Change.* Soomi Lee, University of La Verne
- *Property Tax Delinquency and Foreclosure Contagion.* Timothy Hodge, Oakland University, Andrew McAllister, Oakland University

Discussants:

- Soomi Lee, University of La Verne
- Timothy Hodge, Oakland University
- Zach Keeler, Texas Tech University

43. [NARSC Plenary Session] Making Regional Planning Work in San Diego/Tijuana: 50 Years of "Temporary Paradise?" and the World Design Capital in 2024

Thursday | 7:00 pm-8:00 pm | California A & B

We cordially invite you to join us in commemorating the 50th anniversary of "Temporary Paradise?" authored by the esteemed Donald Appleyard and Kevin Lynch. Their vision has stood the test of time and has brought about transformative changes. Additionally, we are thrilled to celebrate San Diego/Tijuana's historic designation as the World Design Capital in 2024. We want to extend an invitation to a discussion that's not only reflective but also forward-thinking in regional planning strategies for a bi-national, multicultural border region.

With the NARSC conference in the heart of San Diego this year, celebrating "Temporary Paradise?" takes on profound significance. This seminal plan, conceived right here, has been a guiding light for the region's sustainable growth for five decades. What better place to engage with this transformative document than in San Diego, where it continues to resonate and inspire, bridging our past with the promise of the future?

This session will inspire you to create a regional planning document with a poetic voice and captivating imagery. We'll discuss how to translate your imagination into practical policies for thriving communities. We'll also explore the dynamics of reconnaissance in planning, including cross-border implications.

Participants:

- Moderator and Speaker: Bruce Appleyard, San Diego State University
- Mike Stepner
- Dinorah Gonzalez
- Brian Mooney
- Dr. Larry Herzog
- Mai Nguyen

44. Welcome Reception
8:00 pm-9:00 pm | Garden Terrace

Friday, November 17

45. Regional Economic Effects of Disasters 1 [NARSC Special Session] Friday | 8:00 am-10:00 am | Del Mar

Organizers: Yasuhide Okuyama, University of Kitakyushu; Adam Rose, University of Southern California

Chair: Adam Rose, University of Southern California

- *Estimating Industrial Resilience to Flood Disasters using Mesh Origin-Destination Mobility Data.* Huan Liu, Kyoto University, Yoshio Kajitani, Kagawa University, Hirokazu Tatano, Kyoto University
- *Economic Impacts of Fertilizer Shipment Disruptions on the Mississippi River Due to Climate Change.* Chen Zhenhua, Ohio State University, Adam Rose, University of Southern California
- *The Impact of the Christchurch Earthquakes (2010- 2011) on Labour Productivity in the Canterbury Region in New Zealand.* Yousef Abdeljawad, Victoria University of Wellington
- *Economic Consequences of the ISIS Conflict in Iraq: An Interregional Computable General Equilibrium Approach.* Eduardo Haddad, University of São Paulo, Inacio Araujo, University of Sao Paulo, Geoffrey Hewings, University of Illinois at Urbana-Champaign, Kieran Donaghy, Cornell University

Discussants:

- Adam Rose, University of Southern California
- Yousef Abdeljawad, Victoria University of Wellington
- Inacio Araujo, University of Sao Paulo
- Huan Liu, Kyoto University

46. Development and Applications of Multi-regional Input-output Tables [NARSC Special Session] Friday | 8:00 am-10:00 am | Imperial

Organizers: Matthew Lyons, University of Birmingham; Geoffrey Hewings, University of Illinois at Urbana-Champaign

Chair: Geoffrey Hewings, University of Illinois at Urbana-Champaign

- *Exploring the Deep Roots of Interregional Inequality: Spatial Income Distribution in The European Regions.* André Carrascal-Incera, University of Oviedo, Spain, Geoffrey Hewings, University of Illinois at Urbana-Champaign

- *Bridging the Gap: Exploring the Relationship between Public R&D Funding and Regional Economic Development.*
- *No More Gambling: Estimating Non-Survey Regional and Interregional Input-Output Tables by Averaging Location Quotients.* Geoffrey Hewings, University of Illinois at Urbana-Champaign
- *The Relationship Between Firm Insolvencies, Households and Regional Resilience.* Matthew Lyons, University of Birmingham, Simon Collinson, University of Birmingham, Huanjia Ma, University of Birmingham
- *Geographical Proximity and Technological Similarity.* Eduardo Haddad, University of São Paulo, Inacio Araujo, University of Sao Paulo, Fernando Perobelli, Federal University of Juiz de Fora

Discussants:

- Matthew Lyons, University of Birmingham
- Geoffrey Hewings, University of Illinois at Urbana-Champaign
- Simon Collinson, University of Birmingham
- Eduardo Haddad, University of São Paulo
- André Carrascal-Incera, University of Oviedo, Spain

47. Location and Spatial Analysis I [NARSC Special Session]

Friday | 8:00 am-10:00 am | Plaza A

Organizers: Alan Murray, University of California - Santa Barbara; Ran Wei, University of California - Riverside

Chair: Alan Murray, University of California - Santa Barbara

- *Looking Way Back: What I Should Have Covered but Didn't.* Rick Church, University of California - Santa Barbara
- *Multiple Gradual Maximal Covering.* Ashleigh Price, The University of Alabama, Kevin Curtin, University of Alabama
- *Enhancing Strategic Positioning through Interactive Viewshed-Based Coverage Optimization.* Jiwon Baik, University of California - Santa Barbara, Alan Murray, University of California - Santa Barbara
- *A Cover-Based Single Facility Location Problem with Continuous Heterogenous Demand.* Bikram Parajuli, University of Oklahoma, Xin (Selena) Feng, University of Oklahoma

Discussants:

- Tony Grubestic, University of California - Riverside
- Jiwon Baik, University of California - Santa Barbara
- Xin (Selena) Feng, University of Oklahoma
- Ashleigh Price, The University of Alabama



53. TRSA Special Academic Session
Is the NEG (New Economic Geography) Still Relevant in 2023 for America?

Friday | 7:55 am - 5:00 pm | La Jolla

Online Access: [please click this Zoom link here](#)

Meeting ID: 830 8389 8147; Passcode: 736979

Organizers

Paul Krugman, Carlos Moreno, Peter Nijkamp, Karima Kourtit, Peter Batey

7:55 am - 8:00 am. Welcome

Kingsley Haynes, Vice-President, The Regional Science Academy (TRSA)

8:00 am – 10:00 am. Session I: Relevance of NEG.

Chair: Neil Reid, University of Toledo

- *The Relevance of NEG in the Context of Migration.* Bruce Newbold, McMaster University
- *Spatial Econometrics and NEG: An Illustration of its Relevance on the Basis of the Wage Curve.* Paul Elhorst, University of Groningen
- *The Relevance of NEG for Developing World.* Shaban Abdul, Tata Institute of Social Sciences Mumbai
- *The Relevance of NEG for Regional Science.* Roberta Capello, Politecnico di Milano

10:00 am – 10:30 am. Coffee Break (Santa Fe Foyer)

10:30 am – 12:30 pm. Session II: Roundtable on NEG.

Chair: Kingsley Haynes, George Mason

- *Introduction: Research Challenges for the New Space Economy.* Peter Nijkamp, Open University
- *Is the New Economic Geography (NEG) Still Relevant in 2023 in North America?* Paul Krugman, Princeton University/City University of New York
- *Is the NEG Still Relevant in 2023?* Tony Venables, University of Manchester
- *Is the 15-Minute City Relevant in the Context of NEG?* Carlos Moreno, IAE - Paris1 Sorbonne University

Roundtable Discussion: *Is the New Economic Geography (NEG) still Relevant in 2023 in North America?*

- Animator: Karima Kourtit, Open University
- Panelists: Laurie Schintler, Paul Krugman, Tony Venables, Carlos Moreno, Peter Nijkamp

12:30 pm – 1:30 pm. Lunch (on your own)

1:30 pm – 13:30 pm. Session III: Relevance of NEG.

Chair: Tomaz Dentinho, University of Azores

- *Rethinking Space: The Dynamics of New Economy Geography.* Ting Zhang, University of Baltimore
- *New Evidence on the Wage Curve: Non-Linearities, Urban Size, and Spatial Scale in Brazil.* Eduardo Haddad, University of São Paulo; Anna Barufi, Bradesco Bank/University of São Paulo; Peter Nijkamp, Open University
- *The Importance of NEG for Less Developed Regions.* John Carruthers, Cornell University
- *Summary: The Relevance of NEG for Regional Science.* Hans Westlund, KTH

13:30 pm – 4:00 pm. Coffee Break

4:00 pm – 14:45 pm. Session IV: Great Minds in Regional Science Lecture

- Chair: Dave Plane, University of Arizona
- Speaker: John Tschangho Kim, University of Illinois
- Title: The Scientific Significance of Ed Mills

4:45 pm – 5:00 pm. Concluding words

**48. Papers in Regional Science Session I: Quality of Life [NARSC Special Session]
Friday | 8:00 am-10:00 am | Plaza C**

Organizer: Tessa Conroy, University of Wisconsin - Madison

Chairs: Tessa Conroy, University of Wisconsin - Madison; Rosella Nicolini, Universitat Autònoma de Barcelona

- *Discontent, Quality of Life and The Urban-Rural Divide.* Camilla Lenzi, Politecnico di Milano, Giovanni Perucca, Politecnico di Milano
- *Housing Financial Stress and Community Well-Being: Is There a Rural Dimension.* Steven Deller, University of Wisconsin - Madison
- *Neighborhood Quality of Life and the Role of the 'Third Place'.* Andrew Van Leuven, Oklahoma State University, Amanda Weinstein, University of Akron
- *Sorting over the Environment: Evidence from the Endangered Species Act.* Tim Komarek, Colorado State University, Richard Melstrom, Loyola University Chicago

Discussants:

- Steven Deller, University of Wisconsin - Madison
- Tim Komarek, Colorado State University
- Camilla Lenzi, Politecnico di Milano
- Amanda Weinstein, University of Akron

49. Regional Science, Climate Change, Environmental Footprint 3 [NARSC Special Session]

Friday | 8:00 am-10:00 am | Sierra A

Organizers: Sandy Dall'erba, University of Illinois - Urbana-Champaign; Alberto Solis, National Renewable Energy Laboratory; Andre Fernandes Tomon Avelino, National Renewable Energy Laboratory; Chen Zhenhua, Ohio State University

Chair: Chen Zhenhua, Ohio State University

- *Changes in Land Use and Greenhouse Gas Emissions from Agriculture and Ranching: A Comparative Analysis Between the Legal Amazon and Other Brazilian Regions.* Luan Marca, Pontifical Catholic University of Rio Grande Do Sul, Augusto Alvim, Pontifical Catholic University of Rio Grande do Sul
- *An Accountant and an Ecologist Walk into a Bar.* John Paul, Brooklyn College, Yehuda Klein, Brooklyn College, Hildegaard Link, Rutgers University
- *The Effect of Ground-Level Pollution on Automotive Accidents in California: Evidence from Mobile Emissions.* Wesley Burnett, USDA Economic Research Service
- *An Environmental Application of the Multi-Dynamic Interregional Input-Output Shift-Share to Water Use in NAFTA Countries.* Claudia Montanía, The Center for Climate,

Regional, Environmental and Trade Economics, Alberto Solis, National Renewable Energy Laboratory, Sandy Dall'erba, University of Illinois - Urbana-Champaign

- *BIOCAST: An Environmentally Extended Non-Linear Input-Output Model for the U.S. Bioeconomy*. Andre Fernandes Tomon Avelino, National Renewable Energy Laboratory, Greg Avery, National Renewable Energy Laboratory, Mengming Li, University of Florida, Alberto Solis, National Renewable Energy Lab, Yimin Zhang, National Renewable Energy Laboratory, Patrick Lamers, National Renewable Energy Laboratory

Discussants:

- John Paul, Brooklyn College
- Augusto Alvim, Pontifical Catholic University of Rio Grande do Sul
- Claudia Montanía, The Center for Climate, Regional, Environmental and Trade Economics
- Andre Fernandes Tomon Avelino, National Renewable Energy Laboratory
- Wesley Burnett, USDA Economic Research Service

50. Regional/Rural Development IV [NARSC Special Session]

Friday | 8:00 am-10:00 am | Sierra B

Organizers: Sarah Low, University of Illinois - Urbana-Champaign; Tim Komarek, Colorado State University; Stephan Weiler, Colorado State University

Chair: Dawn Thilmany, Colorado State University

- *USDA Regional Food Centers as a New Economic Development Catalyst*. Dawn Thilmany, Colorado State University, Anders Van Sandt, U of Wyoming, Lauren Gwin, Oregon State University
- *What Farm Coop Directors Need to Know about Rural Economic Development*. Jody Herchenbach, University of Nebraska - Kearney, Sarah Low, University of Illinois - Urbana-Champaign, Brian Briggeman, Kansas State University
- *The "Outlander Effect" on Scottish Tourism to its Remote Regions*. Katherine Chalmers, California State University - Sacramento
- *The Effect of Veterans Business Outreach Centers*. Kristopher Deming, Michigan State University, Craig Carpenter, Michigan State University

Discussants:

- Sarah Low, University of Illinois - Urbana-Champaign
- Dawn Thilmany, Colorado State University
- Craig Carpenter, Michigan State University
- Katherine Chalmers, California State University - Sacramento

51. [SEA Plenary Session] The Board of Directors' Cuts 3 & 4

Friday | 8:00 am-10:00 am | Santa Fe

- *Revisiting Anselin et al. (1996): The Last Word on Testing Spatial Regression Models.* Malabika Koley, University of Illinois - Urbana-Champaign, Anil Bera, University of Illinois - Urbana-Champaign
- *Robust Spatial Correlation and Spatial Outlier Detection.* Vincenzo Nardelli, Università Cattolica del Sacro Cuore, Giuseppe Arbia, Catholic University

52. Water in Rural Areas

Friday | 8:00 am-10:00 am | California C

Chair: Elham Erfanian, Ohio University

- *Groundwater Decline and Crop Choice: Insights from A Dynamic Discrete Choice Model.* Haoying Wang, New Mexico Tech
- *Droughts and Productivity.* Luz Yadira Gómez-Hernández, Universitat Autònoma de Barcelona
- *Drinking Water in Appalachia.* Elham Erfanian, Ohio University, Gi-Eu Lee, National Cheng Kung University, Dominic Gomez, Ohio University

Discussants:

- Luz Yadira Gomez-Hernandez, Universitat Autònoma Barcelona
- Elham Erfanian, Ohio University
- Haoying Wang, New Mexico Tech

54. Covid-19 Pandemic and Housing Market

Friday | 8:00 am-10:00 am | Plaza B

Chair: Keith Waters, George Mason University

- *Pandemic Housing Market - Impact of Low Interest Rates and Work from Home.* Keith Waters, George Mason University, Terry Clower, George Mason University, Lisa Sturtevant, BrightMLS
- *Renovation Revolution? Investigating Housing Renovation Decisions and Capitalization Before and After the COVID-19 Pandemic.* Mitchell Livy, California State University - Fullerton
- *The Impact of Remote Working on Job-Housing Reallocation in The Bay Area-Central Valley Region.* Bonnie Wang, University of Southern California

Discussants:

- Mitchell Livy, California State University - Fullerton
- Keith Waters, George Mason University
- Bonnie Wang, University of Southern California

===== **Coffee Break**=====

10:00 am-10:30 am | Santa Fe Foyer

55. Outreach and Regional/Rural Development 1 [NARSC Special Session]
Friday | 10:30 am-12:30 pm | California C

Organizers: Heather Stephens, West Virginia University; John Winters, Iowa State University; Timothy Komarek, Old Dominion University; Sarah Low, University of Illinois - Urbana-Champaign; Stephan Weiler, Colorado State University

Chair: Peter Orazem, Iowa State University

- *What Factors Explain the Declining Rate of Rural New Firm Entry?* Peter Orazem, Iowa State University
- *Working Disincentives: Implications of Low Returns to Fulltime Work for The Working Poor and Potential Policy Solutions.* Emily Wornell, Ball State University, Monica Fisher, University of Idaho, Steven Tuttle, Ball State University, Paul Lewin, University of Idaho, Bruce Weber, Oregon State University
- *Business Owners of Color in Wisconsin: Challenges, Opportunities, and Strategies to Strengthen Businesses and the Economy.* Tessa Conroy, University of Wisconsin - Madison, Mary McDermott, University of Wisconsin - Madison, Matthew Kures, University of Wisconsin - Madison
- *Incorporating Risk into a Feasibility Analysis of an Assisted Living Project in a Rural Nevada County.* Thomas Harris, University of Nevada, Reno

56. Regional Economic Effects of Disasters 2 [NARSC Special Session]
Friday | 10:30 am-12:30 pm | Del Mar

Organizers: Yasuhide Okuyama, University of Kitakyushu; Adam Rose, University of Southern California

Chair: Yasuhide Okuyama, University of Kitakyushu

- *Multi-scale and Multi-sectoral Estimation of Economic Activity Losses due to COVID-19 Lockdown in the Philippines using Electricity Consumption Data.* Ma. Flordeliza Del Castillo, Kyoto University; Toshio Fujimi, Kyoto University; Hirokazu Tatano, Kyoto University
- *The Use of Insurance Markets to Mitigate the Impact of Climate-Change Induced Environmental Risk.* Yehuda Klein, Brooklyn College; Hildegard Link, Rutgers University; John Paul, Brooklyn College
- *An Analysis of Investment Effect of Green Infrastructure for Flood Protection by Means of Cost and Benefit-Return Table.* Eizo Hideshima, Nagoya Institute of Technology;

Tsubasa Ando, Aichi Prefecture; Toshie Noritake, NKUS; Nobuko Kawaguchi, Aichi Institute of Technology

- *Economic Structural Changes and Impact Analysis of Disasters.* Yasuhide Okuyama, University of Kitakyushu

Discussants:

- Yehuda Klein, Brooklyn College
- Eizo Hideshima, Nagoya Institute of Technology
- Yasuhide Okuyama, University of Kitakyushu
- Ma. Flordeliza Del Castillo, Kyoto University

57. Location and Spatial Analysis II [NARSC Special Session]

Friday | 10:30 am-12:30 pm | Plaza A

Organizers: Alan Murray, University of California - Santa Barbara; Ran Wei, University of California - Riverside

Chair: Ran Wei, University of California - Riverside

- *Hydrant Coverage Analysis and Assessment as Critical Infrastructure to Support Structure Fire and Wildfire Response.* Vanessa Echeverri Figueroa, University of California - Santa Barbara, Alan Murray, University of California - Santa Barbara, Rylee Pupa, University of California - Santa Barbara, Jiwon Baik, University of California - Santa Barbara, Darlene Rini, University of California - Santa Barbara
- *Enhancing Meteorological Observation Through Location Optimization of Mobile Radar Deployment.* Xin (Selena) Feng, University of Oklahoma, David Schwartzman, University of Oklahoma, Bikram Parajuli, University of Oklahoma, Xuguang Wang, University of Oklahoma
- *Census Disclosure Avoidance and Spatial Data Uncertainty for Location Modeling.* Tony Grubestic, University of California - Riverside, Ran Wei, University of California - Riverside
- *Examining the Impacts of Continuously Represented Surfaces in Coverage and Access Location Models.* Seonga Cho, University of California - Santa Barbara, Alan Murray, University of California - Santa Barbara, Somayeh Dodge, University of California - Santa Barbara, Rick Church, University of California - Santa Barbara

Discussants:

- Bikram Parajuli, University of Oklahoma
- Seonga Cho, University of California - Santa Barbara
- Rick Church, University of California - Santa Barbara
- Daoqin Tong, Arizona State University

58. Papers in Regional Science II: Economic Well-Being [NARSC Special Session]
Friday | 10:30 am-12:30 pm | Plaza C

Organizer: Tessa Conroy, University of Wisconsin - Madison

Chairs: Rosella Nicolini, Universitat Autònoma de Barcelona; Tessa Conroy, University of Wisconsin – Madison

- *New Business Opportunities from COVID-19.* Mark Partridge, Ohio State University, Heather Stephens, West Virginia University, Zach Keeler, Texas Tech University
- *Heterogeneous Impacts of the Broadband Initiatives Program on Broadband Subscriptions, Telework, Employment, and Wages: Analysis Using Confidential American Community Survey Data.* John Pender, USDA Economic Research Service, Robert Dinterman, U.S. Department of Agriculture, Anil Rupasingha, USDA Economic Research Service, Joshua Goldstein, University of Virginia, Ryan Williams, USDA Economic Research Service
- *Impacts of the USDA Community Connect and ReConnect Broadband Programs on Rural Broadband Speed.* Joshua Goldstein, University of Virginia, John Pender, USDA Economic Research Service
- *“Buy a Bigger House and Live in the Suburbs”? Geographic and Demographic Trends in Nonmetropolitan Home Purchases, 2018-2021.* Nicholas Kacher, Scripps College

Discussants:

- John Pender, U.S. Department of Agriculture
- Nicholas Kacher, Scripps College
- Heather Stephens, West Virginia University
- Joshua Goldstein, University of Virginia

59. Regional Science, Climate Change, Environmental Footprint 4 [NARSC Special Session]

Friday | 10:30 am-12:30 pm | Sierra A

Organizers: Sandy Dall'Erba, University of Illinois - Urbana-Champaign; Alberto Solis, National Renewable Energy Laboratory; Chen Zhenhua, Ohio State University; Andre Fernandes Tomon Avelino, National Renewable Energy Laboratory

Chair: Andre Fernandes Tomon Avelino, National Renewable Energy Laboratory

- *Does Environmental Regulation Affect Labor Demand in China: Evidence from the Carbon Emissions Trading Scheme.* Mengming Li, University of Florida, Christa Court, University of Florida
- *GCAM and CGE Regional Modeling – A Modeling Framework To Simulate Distinct Carbon Dioxide Removal Approaches.* João Pedro Ferreira, University of Virginia, Javadi Parisa,

University of Virginia, William Shobe, University of Virginia, Andres Clarens,
University of Virginia

- *Investments and Zero Deforestation Policy in The Brazilian Amazon: Regional Economic Impacts.* EDSON DOMINGUES, Federal University of Minas Gerais, Aline Magalhaes, Federal University of Minas Gerais, Gessica Cardoso, Federal University of Minas Gerais
- *Domestic Trade Drives Brazilian Amazon's Deforestation.* Eduardo Haddad, University of São Paulo, Inacio Araujo, University of Sao Paulo, Rafael Barbieri, WRI, Fernando Perobelli, Federal University of Juiz de Fora, Ademir Rocha, University of São Paulo, Karina Sass, Universidade dos Açores, Carlos Nobre, University of São Paulo
- *Impacts of Local and Regional Carbon Market in Hong Kong and China's Greater Bay Area: A Dynamic CGE Analysis.* Kyung-Min Nam, University of Hong Kong, Ji Zheng, University of Hong Kong

Discussants:

- João Pedro Ferreira, University of Virginia
- Edson Domingues, Federal University of Minas Gerais
- Eduardo Haddad, University of São Paulo
- Kyung-Min Nam, University of Hong Kong
- Mengming Li, University of Florida

60. Regional/Rural Development V [NARSC Special Session]

Friday | 10:30 am-12:30 pm | Sierra B

Organizers: Sarah Low, University of Illinois - Urbana-Champaign; Tim Komarek, Colorado State University; Stephan Weiler, Colorado State University

Chair: Steven Deller, University of Wisconsin - Madison

- *Differences in Start-Up Financing amongst Women and Minoritized Vetpreneurs.* Kristopher Deming, Michigan State University, Craig Carpenter, Michigan State University
- *Local Government Finance and Social Inequalities: Applying 'Fiscal Regimes' to the Mountain West.* Kendall Stephenson, Colorado State University
- *Public Expenditure and the Economic Mobility of Families: Evidence from Colorado.* Anita Pena, Colorado State University
- *Local Crowding Out, the Social Safety Net and Fiscal Consolidation: Evidence from the Budget Control Act of 2011.* Tim Komarek, Colorado State University, Gary Wagner, University of Louisiana at Lafayette, Vinicius Cicero, Colorado State University

Discussants:

- Kendall Stephenson, Colorado State University
- Anita Pena, Colorado State University
- Steven Deller, University of Wisconsin - Madison
- Craig Carpenter, Michigan State University

61. [SEA Concurrent Session 6] Spatial Panel and Space-time Models
Friday | 10:30 am-12:30 pm | Imperial

- *Estimation of Matrix Exponential Spatial Panel Data Models with Fixed Effects.* Ye Yang, Capital University of Economics and Business, Osman Dogan, Istanbul Technical University, Suleyman Taspinar, CUNY - Queens College, Anil Bera, University of Illinois - Urbana-Champaign
- *Multi-Dimensional Spatial Panel Data Models with Fixed Effects: Formulation, Estimation and Inference.* Alain Pirotte, Université Paris-Panthéon-Assas, Zhenlin Yang, Singapore Management University
- *Combining p-values for Combined Hypothesis Testing in Panels.* Giovanni Urg, Bayes Business School (formerly Cass), Alain Pirotte, Université Paris-Panthéon-Assas
- *Bias-corrections for Cross-Sectional and Serial Dependencies and Heteroskedasticities in Large Linear Panel Models with Interactive Effects.* RUNYU DAI, Tohoku University, Takashi Yamagata, University of York

62. [SEA Concurrent Session 5] Autocorrelation and Autoregression
Friday | 10:30 am-12:30 pm | Santa Fe

- *Testing Spatial Correlation for Spatial Models with Heterogeneous Coefficients When Both n and T Are Large.* Shi Ryoung Chang, Ohio State University, Robert de Jong, Ohio State University
- *Estimation and Inference in Multivariate Spatiotemporal Models with Common Latent Factors.* M. Hashem Pesaran, University of Southern California, Cynthia Yang, Florida State University
- *Convolutional Auto-Regression for Multivariate Spatial Time Series.* Yasumasa Matsuda, Tohoku University, RUNYU DAI, Tohoku University

64. Housing Price and Housing Supply
Friday | 10:30 am-12:30 pm | Plaza B

Chair: Nivedya Madankara Kottayi, San Diego Association of Governments

- *Local Linearity and Aggregate Convexity: Explaining the Secular Trend in Rising Housing Prices.* Anthony Orlando, California State Polytechnic University, Pomona, Christian Redfearn, University of Southern California
- *The Impact of In-House Death on Nearby Housing Rents and Prices: Evidence from Tokyo Metropolitan Area.* Takeru Sugawara, Housing Research & Advancement Foundation of Japan, Taisuke Sadayuki, Seijo University, Naonari Yajima, Seijo University, Mariko Nakagawa, Hitotsubashi University
- *Will We ADU Our Way out of a Housing Crisis? Modeling the Magnitude of ADU Development in the San Diego Region.* Nivedya Madankara Kottayi, San Diego Association of Governments, Michael Ma, San Diego Association of Governments,

Bryce Burdge, San Diego Association of Governments, Eric Liu, San Diego Association of Governments, Grace Chung, San Diego Association of Governments, Beth Jarosz, PRB

Discussants:

- Taisuke Sadayuki, Seijo University
- Nivedya Madankara Kottayi, San Diego Association of Governments
- Anthony Orlando, California Polytechnic State University - Pomona

65. SRSA Council Meeting (Invitation only)
Friday | 12:30 pm-1:30 pm | Pacifica

===== Lunch on Your Own =====
12:30 pm-1:30 pm

12:30 pm -1:30 NARSC X YSI Informal Young Scholars' Networking Lunch

Speakers: Dr. Sandy Dall'Erba and Dr. Pedro Amaral

This lunch is for graduate students, early career scholars, and also established scholars. This event is funded by the Regional and Economics Working Group (URE-WG) within the [Young Scholars Initiative](#) of the [Institute for New Economic Thinking](#) (YSI/INET) to facilitate collaboration with NARSC. Details will be announced via email.

66. Outreach and Regional/Rural Development 2 [NARSC Special Session]
Friday | 1:30 pm-3:30 pm | California C

Organizers: Heather Stephens, West Virginia University; John Winters, Iowa State University; Tim Komarek, Colorado State University; Sarah Low, University of Illinois - Urbana-Champaign; Stephan Weiler, Colorado State University

Chair: John Winters, Iowa State University

- *Potential Opportunities to Diversify and Grow the Economy of Hawaii.* [Steven Bond-Smith, University of Hawaii - Manoa](#), [Sumit Ilamkar, University of Hawaii - Manoa](#)
- *Bridging the Gap: The Role of Regional Commissions in Infrastructure Funding for Rural and Distressed Areas.* [Heather Stephens, West Virginia University](#), [Tony Pipa, Brookings Institution](#), [David Nason, West Virginia University](#), [Zoe Swarzenski, Brookings Institution](#)
- *Designing Geospatial and Regional Science Tools for Virginia Cooperative Extension.* [Susan Chen, Virginia Tech](#), [Michael Cary, Virginia Tech](#)

- *Research and Extension Programming Interface: A Case Study in Broadband.* Steven Deller, University of Wisconsin - Madison, Tessa Conroy, University of Wisconsin - Madison, Kristin Runge, University of Wisconsin - Madison, Matthew Kures, University of Wisconsin - Madison, Gail Huycke, University of Wisconsin - Madison, Chris Stark, University of Wisconsin - Madison
- *Natural Amenities and Their Impacts on Local and Regional Economies: A Spatial Analysis of Iowa.* Biswa Das, Iowa State University, Lighton Nakidde, Iowa State University

67. Location and Spatial Analysis III [NARSC Special Session]

Friday | 1:30 pm-3:30 pm | Plaza A

Organizers: Alan Murray, University of California - Santa Barbara; Ran Wei, University of California - Riverside

Chair: Rick Church, University of California - Santa Barbara

- *Community Asset-Based Approach for Optimizing the Selection of Fresh Produce Access Points.* Jessica Embury, San Diego State University, Piotr Jankowski, San Diego State University, Iana Castro, San Diego State University, Atsushi Nara, San Diego State University
- *A New Activity Space-Based Regionalization Method to Delineate Neighborhoods.* Jiwon Jang, Arizona State University, Daoqin Tong, Arizona State University, Dylan Connor, Arizona State University
- *Spatial Assessment of Facility Locations: A Heuristic for the Rigid Body Weber Problem.* Enbo Zhou, University of California - Santa Barbara, Alan Murray, University of California - Santa Barbara
- *Form-Based Codes Revisited: Integrating GIS with Multi-Objective Linear Programming to Measure Excess Commuting in the Orlando Metro Region.* Reza Mortaheb, UC Santa Barbara, Alan Murray, University of California - Santa Barbara, Piotr Jankowski, San Diego State University

Discussants:

- Vanessa Echeverri Figueroa, University of California - Santa Barbara
- Reza Mortaheb, UC Santa Barbara
- Jessica Embury, San Diego State University
- Jiwon Jang, Arizona State University

68. Papers in Regional Science and Regional/Rural Session III: Health [NARSC Special Session]

Friday | 1:30 pm-3:30 pm | Plaza C

Organizer: Tessa Conroy, University of Wisconsin - Madison

Chairs: Tessa Conroy, University of Wisconsin - Madison; Rosella Nicolini, Universitat Autònoma de Barcelona

- *The Stress of Childhood Poverty in 1969 and Current Working Age Disease-Related Mortality.* David McGranahan, U.S. Department of Agriculture, Elizabeth Dobis, USDA Economic Research Service
- *The Effects of SNAP Work Requirements on Labor Market and Health Outcomes.* Thomas Keene, Michigan State University, Craig Carpenter, Michigan State University
- *Maternal Responses to the Zika Epidemic: Immunization and Beyond.* Caroline Welter, West Virginia University
- *Flush to Flourish: Exploring Early Sanitation Access and Childhood Cognitive Evolution.* Lackson D. Mudenda, Colby College

Discussants:

- Caroline Welter, West Virginia University
- David McGranahan, U.S. Department of Agriculture
- Lackson D. Mudenda, Colby College
- Thomas Keene, Michigan State University

69. Regional/Rural Development VI [NARSC Special Session]

Friday | 1:30 pm-3:30 pm | Sierra B

Organizers: Sarah Low, University of Illinois - Urbana-Champaign; Tim Komarek, Colorado State University; Stephan Weiler, Colorado State University

Chair: Dayton Lambert, Oklahoma State University

- *Returning to the Nest after College? Homegrown Talent Initiatives, Regional Disparities, and Individual Well-Being.* Rui Du, Oklahoma State University, Yankun Kang, Central University of Finance and Economics, Weizeng Sun, Central University of Finance and Economics, Guanghua Wan, Fudan University
- *Urban-Rural Differences in Willingness to Pay for Broadband in the United States: A Meta-Analysis.* Sabina Regmi, Mississippi State University, Ayoung Kim, Mississippi State University, Devon Mills, Mississippi State University, John Green, Southern Rural Development Center, Mississippi State University
- *Creative Destruction and the Reallocation of Capital in Rural and Urban Areas.* Dayton Lambert, Oklahoma State University, Jason Brown, Federal Reserve Bank of Kansas City
- *Urbanization and Indigenous Social Capital.* Matt Roskrige, Massey University

Discussants:

- Sabina Regmi, Mississippi State University
- Dayton Lambert, Oklahoma State University
- Matt Roskrue, Massey University
- Rui Du, Oklahoma State University

70. [SEA Plenary Session] Spatial Econometrics Software Roundtable

Friday | 1:30 pm-3:30 pm | Santa Fe

Organizers: Roger Bivand, Norwegian School of Economics (NHH); Giuseppe Arbia, Catholic University

Chair: Giuseppe Arbia, Catholic University

- *PySAL/Spreg – The Module for Spatial Regression Models in Python.* Luc Anselin, University of Chicago, [Pedro Amaral, Cedeplar/UFMG](#)
- *How the R-spatial evolution project affects spatial econometrics workflows.* [Roger Bivand, Norwegian School of Economics \(NHH\)](#)
- *Heterogeneity in Spatial Models: More on hspm in R.* [Gianfranco Piras, Catholic University](#), Mauricio Sarrias, Universidad de Talca
- *PySAL and friends: reflections on onboarding, growth, and change.* [Elijah Knaap, San Diego State University](#), Sergio Rey, San Diego State University

Panelists:

- Roger Bivand, Norwegian School of Economics (NHH)
- Gianfranco Piras, Catholic University
- Pedro Amaral, Universidade Federal de Minas Gerais
- Elijah Knaap, San Diego State University

Discussants:

- Luc Anselin, University of Chicago
- Sergio Rey, San Diego State University

71. Place-Based Incentives: Firms and Jobs

Friday | 1:30 pm-3:30 pm | Del Mar

Chair: Narae Lee, George Mason University

- *Can a Hiring Credit Program Create a Job for a Vulnerable Worker in Rural Context? Evaluating the First Job Act in Colombia.* [Narae Lee, George Mason University](#)
- *Evaluating the Impact of Place-Based Jobs Policies in Distressed Areas.* [David Nason, West Virginia University](#)

- *Can Leviathan City Governments Use Tax Policy to Attract the Creative Class?* Amit Batabyal, Rochester Institute of Technology, Hamid Beladi, University of Texas at San Antonio
- *Implications of State Business Incentives on Startups and Incumbent Firms.* Abraham Song, Pepperdine University

Discussants:

- David Nason, West Virginia University
- Amit Batabyal, Rochester Institute of Technology
- Abraham Song, Pepperdine University
- Narae Lee, George Mason University

72. Aging Population and Older Adults

Friday | 1:30 pm-3:30 pm | Imperial

Chair: Jaewon Lim, University of Nevada - Las Vegas

- *Implementing Age-Friendly Policies in China: Assessing the Impact on Older Adults' Self-Rated Health.* Wanyang Hu, City University of Hong Kong
- *Does Population Aging Hinder Regional Innovation? A Perspective on Complementarity and Substitution Effects.* Min Zhang, Soochow University, Xiaochen Zhang, Duke Kunshan University
- *Does a Good Home Make Older Adults Better Off? --An Empirical Analysis of The Effects of Home Attributes on Older Adults' Wellbeing.* Wanyang Hu, City University of Hong Kong
- *Aging, Mobility of the Older Adults, and Cost to Society.* Jaewon Lim, University of Nevada - Las Vegas, Yonsu Kim, University of Nevada - Las Vegas, Ayoung Kim, Mississippi State University, Jeehee Lee, University of Nevada - Las Vegas
- *Research on Changing Urban Vitality due to Population Aging - Using Floating Population and Sales Data.* Juwon Hwang, Mokpo National University, Yongsoo An, Centre for Small Business Insights, Seoul Credit Guarantee Foundation, Seongman Jang, Mokpo National University

Discussants:

- Xiaochen Zhang, Duke Kunshan University
- Wanyang Hu, City University of Hong Kong
- Jaewon Lim, University of Nevada - Las Vegas
- Juwon Hwang, Mokpo National University
- Wanyang Hu, City University of Hong Kong

74. Urban Housing Market: Homebuilders, Speculators, and Immigrants Friday | 1:30 pm-3:30 pm | Plaza B

Chair: Edward Coulson, University of California – Irvine

- *National Homebuilders' Internal Network and Local Housing Outcomes.* Seohee Kim, Duke University
- *The Impact of the Speculative Housing Demand on the Poor in South Korea.* Dohyeong Choi, Seoul National University, Seongwoo Lee, Seoul National University
- *Real Estate Market and Urban Structure: An Analysis of Price Formation for Vacant Lots and Apartments in Belo Horizonte (2009-2020).* Pedro Patrício, UN-Habitat, João Tonucci, Cedeplar, Renan Almeida, Universidade Federal de São João del Rey
- *Warmth of the Welcome: Immigration and Local Housing Returns.* Xun Bian, University of North Texas, Edward Coulson, University of California - Irvine, Xiaojin Sun, University of Texas - El Paso

Discussants:

- Pedro Patrício, UN-Habitat
- Dohyeong Choi, Seoul National University
- Edward Coulson, University of California - Irvine
- Seohee Kim, Duke University

75. Inter-Regional Dynamics in Europe Friday | 1:30 pm-3:30 pm | Sierra A

Chair: Martin Andersson, BTH

- *Technological Transformations and Regional Inequalities: Europe in 15 Years' Time.* Roberta Capello, Politecnico di Milano, Andrea Caragliu, Politecnico di Milano
- *The Digital Service Economy and Its Consequences for Intra-regional Wage Inequalities.* Roberta Capello, Politecnico di Milano, Camilla Lenzi, Politecnico di Milano
- *Are There Inequality Spillovers? Evidence Through A Modified Inequality Measure and European Dynamics of Inequality.* Deniz Sevinc, University of Birmingham
- *Business Dynamism and Spatial Productivity. Evidence from European NUTS 3 Regions.* Alexandra Tsvetkova, OECD, Nikolaos Terzidis, Groningen University
- *Impacts of the Swedish European Regional Fund Business Initiatives – A Time Heterogeneous Approach.* Martin Andersson, BTH

Discussants:

- Camilla Lenzi, Politecnico di Milano
- Deniz Sevinc, University of Birmingham
- Nikolaos Terzidis, Groningen University
- Martin Andersson, BTH
- Andrea Caragliu, Politecnico di Milano

===== Coffee Break =====
3:30 pm-4:00 pm | Santa Fe Foyer

76. Outreach and Regional/Rural Development 3 [NARSC Special Session]
Friday | 4:00 pm-6:00 pm | California C

Organizers: Heather Stephens, West Virginia University; John Winters, Iowa State University; Tim Komarek, Colorado State University; Sarah Low, University of Illinois - Urbana-Champaign; Stephan Weiler, Colorado State University

Chair: Amanda Weinstein, University of Akron

- *Why Have State and Local Economic Development Policies Been So Disappointing?* Emily Wornell, Ball State University, Amanda Weinstein, University of Akron, Michael Hicks, Ball State University
- *Quickly Assessing the Post-COVID VMT Rebound Effect Using Location-Based Services Data.* Kevin Kane, Southern California Association of Governments, Huixin Zheng, Southern California Association of Governments
- *Where are the COVID-19 Pandemic Disruptions on the Domestic Migration Network? Evidence from Backbone Extraction of Inter-County Migration.* Anqi Xu, California Department of Finance, Yujie Hu, University of Florida, Jinpeng Wang, University of Florida
- *Great Lakes but Not So Great Education for African Americans in the Midwest.* John Winters, Iowa State University
- *Using Regional Science to Assist Craft Breweries.* Neil Reid, University of Toledo

77. [SEA Concurrent Session 8] Housing and Quality of Life
Friday | 4:00 pm-6:00 pm | Imperial

- *The House Price-Supply Curve.* Jiyoung Chae, Federal Reserve Bank of Richmond
- *Improving Real Estate Price Prediction Accuracy by Explicitly Considering Heteroscedasticity.* Takahisa Yokoi, Shokei Gakuin University
- *Seeding Efficient Large-Scale Public Health Interventions in Diverse Spatial-Social Networks.* Xiaoyi Han, Xiamen University, Yilan Xu, University of Illinois - Urbana-Champaign, Yi Huang, Nanjing Audit University, Linlin Fan, Pennsylvania State University, Minhong Xu, New York University, Song Gao, University of Wisconsin - Madison

78. [SEA Concurrent Session 7] Statistical Challenges to Spatial Econometrics: Sample, Subsamples, Kernels and Trees

Friday | 4:00 pm-6:00 pm | Santa Fe

- *Defining Ad-Hoc Sampling Designs for Small Area Estimation.* Piero Demetrio Falorsi, Sapienza Università di Roma, Stefano Falorsi, ISTAT, Vincenzo Nardelli, Università Cattolica del Sacro Cuore, Paolo Righi, ISTAT
- *A Spatial CART algorithm: Some Preliminary Results.* Alfredo Cartone, University of Chieti-Pescara, Piras Gianfranco, University of Chieti-Pescara, Paolo Postiglione, University of Chieti-Pescara
- *Testing Clustered Equal Predictive Ability with Unknown Clusters.* Oguzhan Akgun, University of Burgundy, Alain Pirotte, Université Paris-Panthéon-Assas, Giovanni Urg, Bayes Business School (formerly Cass), Zhenlin Yang, Singapore Management University

79. Policy and Governance in Land Use Decisions

Friday | 4:00 pm-6:00 pm | Del Mar

Chair: Jiakai Zhang, New Mexico Institute of Mining and Technology

- *How Does Land Use Policy Affect Local Labor Market and Housing Market?* Meng-Ting Chen, Soochow University, Jiakai Zhang, New Mexico Institute of Mining and Technology
- *An Evolutionary Game Analysis and Policy Optimization of Central Land Authority of Territorial Space Use Control Based on Land Development Right Allocation.* Yun XiongG, China University of Geosciences (Wuhan)
- *Analysis of The Relationship Between Urbanization Development and Land Use Change in Qianxi City. Guizhou Province as an Example.* Yuanyuan Yang, China University of Geosciences.
- *Urban Land Use Regulation in Poor Areas: An Evaluation of the Implementation of the Social Interest Special Zones in Brazil.* Aurélio Sobrinho, Federal University of Pernambuco, Raul Silveira Neto, Federal University of Pernambuco

Discussants:

- Yun Xiong, China University of Geosciences (Wuhan)
- Yuanyuan Yang, China University of Geosciences
- Raul Silveira Neto, Federal University of Pernambuco
- Jiakai Zhang, New Mexico Institute of Mining and Technology

81. Networks and Network Centrality in Decision-Making Friday | 4:00 pm-6:00 pm | Plaza A

Chair: Jhon James Mora, Universidad Icesi

- *Power of Persuasion: How Economic Development Decisions are Made through Communication.* Kerry Fang, Florida State University, Samuel Staley, Florida State University, Gordon Erlebacher, Florida State University, Joey Zhang, Florida State University, Yijia Wen, Florida State University, Corey Xu, The Hong Kong University of Science and Technology
- *Who Knows? The Effect of Information Access on Social Network Centrality.* Pedro Souza, Queen Mary University of London, Laura Derksen, University of Toronto
- *Returns to Workplace Centrality: Evidence from Brazil.* Ricardo Freguglia, Federal University of Juiz de Fora, Marcelo Arbex, University of Windsor
- *Social Interactions of The Individual Labor Participation in A Developing Country: Cooperative or Competitive?* Jhon James Mora, Universidad Icesi

Discussants:

- Pedro Souza, Queen Mary University of London
- Ricardo Freguglia, Federal University of Juiz de Fora
- Jhon James Mora, Universidad Icesi
- Kerry Fang, Florida State University

82. Hedonic Valuation of Environmental Amenities Friday | 4:00 pm-6:00 pm | Plaza B

Chair: Mitchell Livy, California State University – Fullerton

- *The General and Spatially Differentiated Effects of Air Pollution on Housing Prices: A Large-sample Hedonic Analysis in Beijing.* Jiangwei Liu, Renmin University of China, H. Allen Klaiber, Ohio State University, Wei Chen, Renmin University of China
- *Socio-spatial Disparities in Urban Park Accessibility and Its Association with Housing Price: The Existing Challenge for Toronto in Its Aspiration to Be A Livable City.* Ziyue 'Davia' Dong, University of Toronto, Eric Miller, University of Toronto
- *Measure Not by the Scale of Perfection: Fixed-Effects Versus Peers in Hedonic Valuation of Spatial Amenities.* Sotirios Thanos, University of Manchester, Jean Dube, Universite Laval
- *It's My Amenity and I Need It Now: Examining the Housing Price Capitalization of Temporally Varying Environmental Amenities.* Mitchell Livy, California State University - Fullerton

Discussants:

- Jiangwei Liu, Renmin University of China
- Ziyue 'Davia' Dong, University of Toronto

- Sotirios Thanos, University of Manchester
- Mitchell Livy, California State University - Fullerton

83. Papers in Regional Science Lecture [NARSC Special Session]

Friday | 4:00 pm-6:00 pm | Plaza C

Title: Broadband Internet Connections and Rural Development

Speaker: Elizabeth Mack, Michigan State University

Chair: Rosella Nicolini, Universitat Autònoma de Barcelona

84. Race and Ethnicity in the U.S. Regions

Friday | 4:00 pm-6:00 pm | Sierra A

Chair: Melody Muldrow, University of Missouri

- *Deconstructing the Racial Wealth Disparities in the Black Belt.* Melody Muldrow, University of Missouri
- *Ethnic Diversity and Income Growth: Evidence from US Counties.* Luyi Han, Pennsylvania State University, Zheng Tian, Pennsylvania State University, Stephan Goetz, Pennsylvania State University
- *Explaining Within-Distribution Geographic Inequality Changes from 1960-80 and 1980-90, Overall and By Race.* Andrew Nutting, Bryn Mawr College

Discussants:

- Luyi Han, Pennsylvania State University
- Andrew Nutting, Bryn Mawr College
- Melody Muldrow, University of Missouri

85. Trade, Inequality, and Regional Economies

Friday | 4:00 pm-6:00 pm | Sierra B

Chair: Daniel Centuriao, West Virginia University

- *Composite Spatial Indicators for The Targeting of Regional Inequalities in Liverpool City Region.* Patrick Ballantyne, University of Liverpool, Alex Singleton, University of Liverpool
- *Market Spatial Integration Using the Markets in the Mexican Consumer Price Index.* Hector Nuñez, Banco de México, Alfonso Mendoza, Banco De México
- *Exports, Informal Labor Markets, and Poverty in Latin America and The Caribbean.* Daniel Centuriao, West Virginia University

Discussants:

- Hector Nuñez, Banco de México
- Daniel Centuriao, West Virginia University
- Patrick Ballantyne, University of Liverpool

Saturday, November 18

86. Tourism in Regional Economies: Adapting to a Changing Environment Saturday | 8:00 am-10:00 am | California C

Chair: Chun Fang Liu, Ming Chuan University

- *Green Hotspot Visits in the Age of Mass Tourism.* Karima Kourtit, Open University, The Netherlands, Jaewon Lim, University of Nevada - Las Vegas, Peter Nijkamp, Open University, Heerlen, The Netherlands
- *Tourism Vulnerability and Spatial Adaptation Strategies under the Impact of COVID-19: Using Eastern Taiwan as an Example.* Chi-Tung Hung, Ming Chuan University, Tzu-Hsuan Huang, Ming Chuan University, Wen-Yen Lin, Ming Chuan University
- *The Environmental and Welfare Cost to the Azores of Extending the EU-ETS with the Aviation Industry.* Hans Kremers, University of the Azores, Mario Fortuna, University of the Azores
- *Tourism Vulnerability and the Growth of the High-Technology Industry Under the Adverse Impact of the Pandemic: The Case of Tainan City, Taiwan.* Chun Fang Liu, Ming Chuan University, Chi-Tung Hung, Ming Chuan University

Discussants:

- Chi-Tung Hung, Ming Chuan University
- Hans Kremers, University of the Azores
- Chun Fang Liu, Ming Chuan University
- Jaewon Lim, University of Nevada - Las Vegas

87. Impact of Disasters on People and Businesses Saturday | 8:00 am-10:00 am | Del Mar

Chair: Rebecca Mari, Bank of England

- *Wildfire, Power Shutoff, and Residential Energy Storage Adoption.* Minhong Xu, New York University
- *Analysis of Influencing Factors on Individual Disaster Resilience: A Multi-Level Analysis in The Context of South Korea.* Yeerim Jung, Seoul National University, in Kwon Park, Seoul National University
- *Impact of NYC Post-Sandy Subway Station Renovations on Household Income in Surrounding Areas.* Yue Huang, New York University, Elizabeth Miller, New York University, Manuela Pérez, New York University, Maggie Maggie Parutta, New York University
- *The Risk of Flooding on UK Corporates. A Sectoral and Supply Chain Analysis of Past and Future Flooding Risk.* Rebecca Mari, Bank of England, Benjamin Crampton, Bank of England, Jeremy Kwok, Bank of England

Discussants:

- Yeerim Jung, Seoul National University
- Yue Huang, New York University
- Rebecca Mari, Bank of England
- Minhong Xu, New York University

88. Regional Resilience to Climate Change
Saturday | 8:00 am-10:00 am | Imperial

Chair: Hyun Kim, Chungnam National University

- *Assessment of Spatial Resilience Adaptation under Climate Change – A Case Study of Xibei Area, New Taipei City, Taiwan.* Wen-Yen Lin, Ming Chuan University, Chi-Tung Hung, Ming Chuan University
- *Inequality and Climate Change: The Within-Countries Distributional Effects of Global Warming.* David Castells-Quintana, Universidad Autónoma de Barcelona, Thomas McDermott, Galway University
- *Rural Resilience to Climate Change: Metropolitan and Non-metropolitan Measures of Vulnerability and Adaptation.* Laura Paul, USDA Economic Research Service
- *Health Justice and Economic Segregation in Climate Risks: Tracing Vulnerability and Readiness Progress.* Hyun Kim, Chungnam National University
- *Universal Basic Income in Appalachia: A Strategy for Clean Energy Transition?* Douglas Eric Belleville, Ohio State University, G. Jason Jolley, Ohio University, Clara Bone, Ohio University, Dominic Gomez, Ohio University

Discussants:

- David Castells-Quintana, Universidad Autónoma de Barcelona
- Laura Paul, USDA Economic Research Service
- Hyun Kim, Chungnam National University
- G. Jason Jolley, Ohio University
- Wen-Yen Lin, Ming Chuan University

89. Policy Changes and Labor Outcome
Saturday | 8:00 am-10:00 am | La Jolla

Chair: Martina Dal Molin, Gran Sasso Science Institute

- *Impact of Oregon's Three-tier Minimum Wage Policy on Firm Survival.* Richard Acquah-Sarpong, Oregon State University
- *The Effect of Relaxation in Labor Laws on Youth Employment: Evidence from Wisconsin.* Kunwon Ahn, Korea Labor Institute, Xiaoyin Li, West Virginia University
- *University Reform in Italy and its Impact on Ph.D. Occupational Outcome.* Martina Dal Molin, Gran Sasso Science Institute, Laura Ciucci, Gran Sasso Science Institute,

Claudio Detotto, University of Corsica, Adriana C. Pinate, Gran Sasso Science Institute

Discussants:

- Xiaoyin Li, West Virginia University
- Martina Dal Molin, Gran Sasso Science Institute
- Richard Acquah-Sarpong, Oregon State University

90. Applications of Spatial Analysis

Saturday | 8:00 am-10:00 am | Plaza A

Chair: Christopher Blake, Emory University

- *Exploring the Relationship Between Gridiron Streets, Suburbanization, and Homeownership Segregation.* Seongmoon Cho, University of Southern California
- *Developing a Quantitative Spatial Economic Model to Evaluate Urban Water Conservation Policies in Denver.* Juan Carlos Lopez, University of Denver
- *Examining the Relationship between Education Access Provision and Education Participation Rates in Neighboring Districts in Indonesia: A Cross-District Study.* Rifqi Maulana, Cornell University
- *Labor Market Returns for Linguistic Clusters: An Application of Gravity Models to Employment and Compensation Outcomes.* Christopher Blake, Emory University, Laurel Ivanoski, Emory University, Daniel Walter, Emory University

Discussants:

- Juan Carlos Lopez, University of Denver
- Rifqi Maulana, Cornell University
- Christopher Blake, Emory University
- Seongmoon Cho, University of Southern California

92. Remote Work and Post-Pandemic Urban Restructuring

Saturday | 8:00 am-10:00 am | Plaza C

Chair: Diego Andres Cardenas Morales, Laval University

- *Telecommuting vs. Satellite Offices: A Comparative Study of their Effects on Firm and Household Location under General Location Theory.* Mitsuru Ota, University of Tsukuba
- *Work-From-Home, Relocation, and Shadow Effects: Evidence from Sweden.* Steven Bond-Smith, University of Hawaii - Manoa, Philip McCann, University of Manchester, Lina Bjerke, Jönköping International Business School, Charlotta Mellander, Jonkoping International Business School
- *Does Flexible Work Make Intrametropolitan Employment Centers Obsolete? An Analysis of Knowledge-Intensive Business Services (KIBS) Activity in The Montréal Metropolitan*

Area. Diego Andres Cardenas Morales, Laval University, Jean Dube, Universite Laval, Richard Shearmur, McGill University

- *Exploring the Dynamic Interplay between the Evolving Trends of Work from Home and Online Shopping.* Motahare Mohammadi, University of Illinois - Chicago, Amir Davatgari, University of Illinois - Chicago, Ramin Shabanpour, University of North Florida, Abolfazl Mohammadian, University of Illinois - Chicago, Joshua Auld, Argonne National Lab

Discussants:

- Lina Bjerke, Jönköping International Business School
- Diego Andres Cardenas Morales, Laval University
- Motahare Mohammadi, University of Illinois - Chicago
- Mitsuru Ota, University of Tsukuba

93. Reflections and Advances in Research and Methodology

Saturday | 8:00 am-10:00 am | Santa Fe

Chair: John Osth, Oslo Metropolitan University, Oslo, Norway

- *Evolution of The Urban Planning Research Landscape: Mapping 30-Years' Meaning Shifts of Key Terms in JAPA, JPER, JPL using a Deep Learning Language Model.* Yijia Wen, Florida State University, Kerry Fang, Florida State University, Jie Hou, Saint Louis University
- *Tackling the Dual Crises of Replicability and Inference in Applied Research, or How to Play “Bayesball” for Government.* Timothy Wojan, National Science Foundation, Dayton Lambert, Oklahoma State University
- *Measuring Space-Time Accessibility: Hansen’s Model Vs. Machine Learning.* Natalia Selini Hadjidimitriou, University of Modena and Reggio Emilia, Aura Reggiani, University of Bologna, Marco Mamei, University of Bologna, John Osth, Oslo Metropolitan University, Oslo, Norway
- *Covariation Mining – Critical Step in Regional System Analysis for Simulative Modeling Studies.* Danlin Yu, Montclair State University

Discussants:

- Timothy Wojan, National Science Foundation
- John Osth, Oslo Metropolitan University, Oslo, Norway
- Danlin Yu, Montclair State University
- Yijia Wen, Florida State University

94. Connectivity and Spatial Optimization
Saturday | 8:00 am-10:00 am | Sierra A

Chair: Yuzhou Chen, University of South Florida

- *Solving The Hub Location Problem Using a Spatially Informed Solution Approach.* Changwha Oh, University of Tennessee, Hyun Kim, University of Tennessee, Yongwan Chun, University of Texas - Dallas
- *Connectivity Approaches to Network Robustness: An Analytical Framework Guiding the Allocation of Mobility Hubs.* Caterina Malandri, University of Bologna, Roberto Patuelli, University of Bologna, Michele Rabasco, University of Bologna, Aura Reggiani, University of Bologna, Rebecca Rossetti, University of Bologna
- *Optimizing Spatio-Temporal Matching for Human Mobility Exploration.* Evgeny Noi, University of California - Santa Barbara, Alan Murray, University of California - Santa Barbara, Somayeh Dodge, University of California - Santa Barbara
- *Addressing the Fixed Effects in Gravity Model based on Origin-Destination Pairs.* Yuzhou Chen, University of South Florida, Ran Tao, University of South Florida

Discussants:

- Roberto Patuelli, University of Bologna
- Evgeny Noi, University of California - Santa Barbara
- Yuzhou Chen, University of South Florida
- Changwha Oh, University of Tennessee

95. Impacts of Transportation Investment on Households and Businesses
Saturday | 8:00 am-10:00 am | Sierra B

Chair: Elijah Knapp, University of California – Riverside

- *The Next Bus Out: Urban Public Transportation and Multidimensional Poverty.* Andres Garcia, Universidad del Rosario, Luz Yadira Gómez-Hernández, Universitat Autònoma de Barcelona, Kevin Muñoz, Universidad Nacional de Colombia
- *Estimation of Economic and Demographic Impact of The New High-Speed Rail in Japan.* Tomoki Ishikura, Tokyo Metropolitan University
- *The Impact of Light Rail Transit on Firms' Survival: The Case of Dijon's Tramway.* Marie-Pier Champagne, Laval University, Jean Dube, Université Laval, Diego Legros, Université de Bourgogne
- *The Effect of Transit Investments on Local Residential Rents: Causal Inference in Spatial Policy Analysis.* Elijah Knaap, San Diego State University

Discussants:

- Tomoki Ishikura, Tokyo Metropolitan University
- Marie-Pier Champagne, Laval University
- Elijah Knaap, San Diego State University
- Luz Yadira Gómez-Hernández, Universitat Autònoma de Barcelona

===== **Coffee Break** =====

10:00 am-10:30 am | Santa Fe Foyer

96. Strategy, Spillover Effects, and Firm Performance
Saturday | 10:30 am-12:30 pm | California C

Chair: Min Zhang, Soochow University

- *Strategic Aspects of Bundling to Prevent Information Acquisition.* Keizo Mizuno, Kwansei Gakuin University, Keiichi Hori, Kwansei Gakuin University
- *The Effects of Dollar General Openings on Next-Door Firms.* Amelia Biehl, Florida Gulf Coast University, Amir Ferreira Neto, Florida Gulf Coast University, Juan Sayago, Florida Gulf Coast University
- *The Variety of Nontradable Consumption Amenities and Local Firm Productivity: Evidence from Restaurants.* Rui Du, Oklahoma State University, Dongmei Guo, Central University of Finance and Economics, Tao Guo, Capital University of Finance and Economics, Weizeng Sun, Central University of Finance and Economics
- *Returns of Private and Public R&D Investments at Firm Level: Does Government Institutional Quality Matter?* Min Zhang, Soochow University, Nanxin Deng, East China University of Science and Technology

Discussants:

- Juan Sayago, Florida Gulf Coast University
- Rui Du, Oklahoma State University
- Min Zhang, Soochow University
- Keizo Mizuno, Kwansei Gakuin University

97. Labor Market: Networks and Discrimination
Saturday | 10:30 am-12:30 pm | Del Mar

Chair: Nancy Lozano Gracia, World Bank

- *A Model of Spatial Job Referral Networks.* Carlos Mesa-Guerra, Cornell University
- *Skills, Matching, and Skill Specificity Across Space.* Carlianne Patrick, Georgia State University
- *The Contribution of Individual and Firm Heterogeneity to the Gender Wage Gap.* Carsten Ochsen, University of Applied Labour Studies, Stephan Brunow, University of Applied Labour Studies, Michaela Fuchs, Institute for Employment Research
- *Are Migrants Second-Class Citizens in The Urban Labor Markets? Evidence from Two Secondary Cities in Tunisia.* Mohamed Amara, University of tunis, Nancy Lozano Gracia, World Bank, Luc Christiaensen, World Bank

Discussants:

- Carlianne Patrick, Georgia State University
- Christian Langholz Carstensen, University of Copenhagen
- Nancy Lozano Gracia, World Bank
- Carlos Mesa-Guerra, Cornell University

98. Urban Spatial Patterns: Evolution, Causes, and Consequences
Saturday | 10:30 am-12:30 pm | Imperial

Chair: Shanaka Herath, University of Technology Sydney

- *Are Chinese Cities Becoming More Polycentric? Examining The Spatial-Temporal Evolution of Urban Spatial Structure in China.* Wenzheng Li, Cornell University, Stephan Schmidt, Cornell University
- *Causes and Consequences of Urban Form: Evidence from US Cities.* Miquel-Angel Garcia-Lopez, Universitat Autònoma de Barcelona, Diego Buitrago-Mora, Universitat Autònoma de Barcelona
- *Can Polycentric Urban Development Simultaneously Achieve Both Economic Growth and Regional Equity? A Multi-Scale Analysis of German Regions.* Wenzheng Li, Cornell University, Stephan Schmidt, Cornell University, Stefan Siedentop, TU Dortmund University
- *Urban Density, Housing Overcrowding and The Spread of COVID-19 in Australian Cities.* Shanaka Herath, University of Technology Sydney, Rebecca Bentley, University of Melbourne, Adelle Mansour, University of Melbourne

Discussants:

- Miquel-Angel Garcia-Lopez, Universitat Autònoma de Barcelona
- Wenzheng Li, Cornell University
- Shanaka Herath, University of Technology Sydney
- Wenzheng Li, Cornell University

99. Spatial Analysis in Transportation Research
Saturday | 10:30 am-12:30 pm | La Jolla

Chair: Kakuya Matsushima, Kyoto University

- *Predictors of Bus Stop Spacing in the US.* Shirin Qiam, University of Illinois - Urbana-Champaign, Ayush Pandey, University of Illinois - Urbana-Champaign, Lewis Lehe, University of Illinois - Urbana-Champaign
- *Motor Vehicle Data Linkage and Spatial Econometric Analysis on The Impacts of Neighborhood Economic Distress on Impaired Driving.* Seunghoon Oh, University of Illinois - Springfield

- *Subway Expansion, Commuting Times and Spatial Equilibrium. The Case of Santiago De Chile.* Ariel Arcos, Catholic University of the North, Dusan Paredes, Universidad Catolica del Norte, Sebastian Cuellar, Catholic University of the North
- *Spatial Equilibrium of Car Sharing Service Market.* Kakuya Matsushima, Kyoto University, Jinchuan Zhan, Kyoto University

Discussants:

- Seunghoon Oh, University of Illinois - Springfield
- Ariel Arcos, Catholic University of the North
- Kakuya Matsushima, Kyoto University
- Shirin Qiam, University of Illinois - Urbana-Champaign

100. Applications of Location Models

Saturday | 10:30 am-12:30 pm | Plaza A

Chair: Minjae Yun, UCLA Law

- *Location Models to Improve Health and Safety at Major Temporary City: The Case of the Hajj.* Graham Clarke, University of Leeds
- *More Powerful Couples: Locational Choice for Advanced Degree Holders.* Christopher Blake, Emory University, Caroline Kreutzen, Emory University
- *Determinants of IT Corporate Branches' Location in Central Europe (On the Example of Poland).* Wioletta Kilar, Pedagogical University of Krakow
- *Understanding Homeless Clustering and its Impact on Public and Governmental Responses: A Street-by-Street Analysis in Los Angeles, California.* Minjae Yun, UCLA Law

Discussants:

- Christopher Blake, Emory University
- Wioletta Kilar, Pedagogical University of Krakow
- Minjae Yun, UCLA Law
- Graham Clarke, University of Leeds

101. Energy Transition: Readiness and Policies

Saturday | 10:30 am-12:30 pm | Plaza B

Chair: Alicia Zhang, Boston University

- *Powering the Clean Energy Transition: Are Electric Generators Being Retired and Built 'On Time'?* Alicia Zhang, Boston University
- *Transitioning to Zero-Emission Buses: A Survey of Usage and Policy in the U.S.* Marina Manganaris, George Mason University, Jonathan Gifford, George Mason University
- *The Effect of State Net Metering Mandates on Residential Solar Adoption within Utilities.* Eric Bowen, West Virginia University

- *Future Alternative Maritime Fuels and Potential to Support Maritime Fuel Demand in the Port of Seattle Region.* Swaroop Atnoorkar, National Renewable Energy Laboratory, Kevin Zhang, Volpe National Transportation Systems Center, Kelcie Kraft, National Renewable Energy Laboratory, Emily Newes, National Renewable Energy Laboratory, Kristin Lewis, Volpe National Transportation Systems Center, Erika Sudderth, Volpe National Transportation Systems Center

Discussants:

- Marina Manganaris, George Mason University
- Eric Bowen, West Virginia University
- Swaroop Atnoorkar, National Renewable Energy Laboratory
- Alicia Zhang, Boston University

102. Economic Opportunities across Regions

Saturday | 10:30 am-12:30 pm | Plaza C

Chair: Augusto Alvim, Pontifical Catholic University of Rio Grande do Sul

- *Market Access, the Skill Premium and Human Capital in Spain (1860-1930).* Rafael González-Val, Universidad de Zaragoza, Pau Insa-Sánchez, Università di Siena, Julio Martinez-Galarraga, Universitat de Barcelona, Daniel A. Tirado-Fabregat, Universitat de Valencia
- *The Relationship among Knowledge Intensive Services, Human Capital, and the Real Estate Market: An Analysis of Dynamic Changes in South Korea.* Jin Eon Kim, Seoul National University, in Kwon Park, Seoul National University
- *Demand for Jobs in Knowledge-Intensive Occupations in the Science and Technology Parks of Rio Grande do Sul – Brazil.* Maurício Gasparote, Pontifical Catholic University of Rio Grande do Sul, Luan Marca, Pontifical Catholic University of Rio Grande do Sul, Augusto Alvim, Pontifical Catholic University of Rio Grande do Sul

Discussants:

- Jin Eon Kim, Seoul National University
- Augusto Alvim, Pontifical Catholic University of Rio Grande do Sul
- Rafael González-Val, Universidad de Zaragoza

103. Student Paper Competition Finalists

Saturday | 10:30 am-12:30 pm | Santa Fe

Co-chairs: Christa Court, University of Florida; Andre Fernandes Tomon Avelino, National Renewable Energy Laboratory

- *Rural Road Construction and Long-term Economic Growth: Evidence from the Full Sample of Chinese Villages.* Junliang Chen, Renmin University of China, Wei Chen, Renmin

University of China, Jialing Yu, Renmin University of China, Wei Chen, Renmin University of China, Xinyue Wang, Renmin University of China

- *The Spatial Spillover Effects of Metro Expansion on Metro Usage: A Quasi-Experimental Analysis in Shenzhen, China.* Daming Lu, Peking University, Wenjia Zhang, Peking University, Paul Ong, University of California - Los Angeles, Senkai Xie, Eindhoven University of Technology
- *Paying More to Landlords: Housing Vouchers, Housing Markets, and Residential Equilibrium.* JoonYup Park, Duke University
- *Local Labor Market Effects of Amazon.* Evan Cunningham, University of Minnesota - Twin Cities

Discussants: TBA

104. Advances in Spatial Econometrics **Saturday | 10:30 am-12:30 pm | Sierra A**

Chair: Paul Jung, Inha University

- *Multicollinearity in Multiscale Geographically Weighted Regression (MGWR).* Wei Kang, University of North Texas, Taylor Oshan, University of Maryland - College Park
- *A J-Test for Spatial Autoregressive Binary Models.* Gianfranco Piras, Catholic University, Mauricio Sarrias, Universidad de Talca
- *Measuring Multivariate Spatial Autocorrelation.* Carlos Baez, University of California - Santa Barbara
- *Expanding the Scope of Spatial Association Analysis: A Revised Approach to Geary's C for Functional Data.* Paul Jung, Inha University, Jean-Claude Thill, University of North Carolina - Charlotte, Jinho Nam, Inha University

Discussants:

- Gianfranco Piras, Catholic University
- Carlos Baez, University of California - Santa Barbara
- Paul Jung, Inha University
- Wei Kang, University of North Texas

105. Travel Patterns and Behavior **Saturday | 10:30 am-12:30 pm | Sierra B**

Chair: Debarshi Indra, Amazon

- *Examining Factors Influencing Multimodal Travel Behavior using Discrete Choice Models.* Kihyun Kwon, University of California - Davis

- *Characterization and Visualization of Travel Patterns in Halifax Regional Municipality, Canada.* Longteng He, Dalhousie University, Venkata Vijaya Mandapati, Dalhousie University, Muhammad Ahsanul Habib, Dalhousie University
- *Enhancing Pedestrian Flow in Urban Environments: A Comprehensive Temporal-Spatial Analysis of Pedestrian Density in Seoul, 2022.* Yoona Cho, Seoul National University, Jungmin Yi, Seoul National University, Haeryung Lee, Seoul National University, Hyejin Lee, Seoul National University
- *The Impact of City Size on Household Travel Behavior: An Instrumental Variable Approach.* Debarshi Indra, Amazon, Abhradeep Maiti, IIM Kashipur, Huibin Chang, Ministry of Transportation and Infrastructure Canada

Discussants:

- Longteng He, Dalhousie University
- Yoona Cho, Seoul National University
- Debarshi Indra, Amazon
- Kihyun Kwon, University of California - Davis

106. [NARSC Plenary Session] NARSC Award Luncheon
Saturday | 12:30 pm-2:30 pm | California A & B

107. Economics of Electric Vehicles
Saturday | 2:45 pm-4:45 pm | California C

Chair: Thomas Klier, Federal Reserve Bank of Chicago

- *Quantifying the Economic Impacts of Electric Vehicle Production.* Yue Ke, Argonne National Laboratory, Matthew Sloggy, USDA Forest Service
- *Electric Vehicle and Supply Equipment Adoption Dynamics in the United States.* Jason Hawkins, University of Nebraska - Lincoln, Hania Afzal, University of Nebraska - Lincoln
- *Impact of China's Subsidy for New Energy Vehicle Charging Points on Public Transportation Demand: Evidence from Beijing's Real Estate Market.* Yilin Bi, Renmin University of China
- *The Market for Used Battery Electric Vehicles - A Viable Transmission Mechanism for A New Vehicle Propulsion Technology?* Thomas Klier, Federal Reserve Bank of Chicago, Levi Bognar, Federal Reserve Bank of Chicago, Leslie McGranahan, Federal Reserve Bank of Chicago

Discussants:

- Hania Afzal, University of Nebraska - Lincoln
- Yilin Bi, Renmin University of China
- Thomas Klier, Federal Reserve Bank of Chicago
- Yue Ke, Argonne National Laboratory

108. Evolving Social Roles and Changing Expectations
Saturday | 2:45 pm-4:45 pm | Del Mar

Chair: Ting Zhang, University of Baltimore

- *The Impacts of Childless Couple on Demographics in a Two-Region OLG Model with Differential Childcare Environment.* Hiroyuki Hashimoto, University of Hyogo, Tohru Naito, Doshisha University
- *Social Isolation of Young People and Urban Environmental Factors: The Case of Seoul, South Korea.* Harim Jeong, Seoul National University, Jin Eon Kim, Seoul National University, in Kwon Park, Seoul National University
- *Men in Caregiving: The Role of Paid Family Medical Leave Across Time and Space.* Ting Zhang, University of Baltimore, Ryan Zhang, Thomas Jefferson High School for Science and Technology

Discussants:

- Harim Jeong, Seoul National University
- Ting Zhang, University of Baltimore
- Hiroyuki Hashimoto, University of Hyogo

109. Reshaping Attitudes and Behaviors: Post-Pandemic Realities
Saturday | 2:45 pm-4:45 pm | Imperial

Chair: Amit Batabyal, Rochester Institute of Technology

- *Post-Pandemic Cities and The Evolution of Workspace.* Diane-Gabrielle Tremblay, Teluq University
- *Changes in Travel Behavior due to COVID-19 Pandemic in HRM.* Yuxiang Li, Dalhousie University, Muhammad Ahsanul Habib, Dalhousie University
- *Attitude Towards the Economy-Environment Trade-Off During the Covid-19 Crisis: An Experimental Cross-Country Analysis.* Giulia Urso, Gran Sasso Science Institute, Adriana C. Pinate, Gran Sasso Science Institute, Nancy Buchan, University of South Carolina, Orgul Ozturk, University of South Carolina
- *On Mask Wearing in Environments with and without a Mask Mandate.* Amit Batabyal, Rochester Institute of Technology
- *Assessing the Impact of COVID-19-Related Policies in Japan on Regional Travel.* Hiroyuki Shibusawa, Toyohashi University of Technology; Cui Mingji, Toyohashi University of Technology

Discussants:

- Yuxiang Li, Dalhousie University
- Giulia Urso, Gran Sasso Science Institute
- Amit Batabyal, Rochester Institute of Technology
- Hiroyuki Shibusawa, Toyohashi University of Technology
- Diane-Gabrielle Tremblay, Teluq University

110. Complexity of Urban Space & Policy Diffusion Saturday | 2:45 pm-4:45 pm | La Jolla

Chair: Sekwen Kim, University of La Verne

- *Comparing City Size Distributions: Gridded Population Vs. Nighttime Lights.* Miguel Puente-Ajovín, Universidad de Zaragoza, Marcos Sanso-Navarro, Universidad de Zaragoza, María Vera-Cabello, Centro Universitario de la Defensa, Zaragoza
- *Spatial and Relational Proximity in Green Innovation Diffusion.* Jianhua Zhang, Groningen University, Milad Abbasiharofteh, Groningen University, Dimitris Ballas, Groningen University, Xiaolong Liu, Groningen University
- *Comparing The Segregation Patterns in Neighborhood Networks Formed by Different Forms of Urban Mobility.* Noli Brazil, University of California - Davis, Joseph Gibbons, San Diego State University
- *Environmental Policy Diffusion, Social Network Analysis, Geographic Analysis.* Sekwen Kim, University of La Verne

Discussants:

- Jianhua Zhang, Groningen University
- Joseph Gibbons, San Diego State University
- Sekwen Kim, University of La Verne
- Marcos Sanso-Navarro, Universidad de Zaragoza

111. Labor Market Dynamics Saturday | 2:45 pm-4:45 pm | Plaza A

Chair: Ephraim Nkonya, USDA

- *Substitutability Between Prime-Age and Marginal Retirement-Age Workers.* Youngwook Jung, University of Illinois - Urbana-Champaign
- *Regional Convergence of Skills and Schooling in Brazilian Manufacturing.* Gustavo Henrique Leite de Castro, University of São Paulo, Carlos Azzoni, University of Sao Paulo
- *Factors Transferring Labor Away from Agriculture Industry.* Saima Bashir, Central State University, George Owusu-Antwi, Central State University
- *Patterns and Trends of Job Quality Growth in The United States.* Ephraim Nkonya, USDA, John Pender, USDA Economic Research Service

Discussants:

- Gustavo Henrique Leite de Castro, University of São Paulo
- Saima Bashir, Central State University
- Ephraim Nkonya, USDA
- Youngwook Jung, University of Illinois - Urbana-Champaign

112. Air Pollution

Saturday | 2:45 pm-4:45 pm | Plaza B

Chair: Kyu-hyeog Chae, University of Seoul

- *A Breath of Fresh Air: Evaluating the Coal-to-gas Policy in China.* Yixuan Wang, Ohio State University
- *Dry Port and PM2.5 Pollution: A Spatial Difference-in-Differences Approach.* Jiahui Li, Inha University, Sangyoon Lee, Inha University, Paul Jung, Inha University
- *Cleaner Air for All: Measuring Effectiveness of Cleaner Trucks on Addressing Environmental Justice Using Spatial-Difference-in-Difference-in-Differences models.* Gina Yeonkyeong Park, Cornell University
- *Examining How Air Pollution and Built Environment Affected Shared Bike Usage of Elderly People in Seoul Using Panel Model.* Kyu-hyeog Chae, University of Seoul, Jinhyun Hong, University of Seoul

Discussants:

- Paul Jung, Inha University
- Gina Yeonkyeong Park, Cornell University
- Kyu-hyeog Chae, University of Seoul
- Yixuan Wang, Ohio State University

113. Financial Sector & Regional Resilience

Saturday | 2:45 pm-4:45 pm | Santa Fe

Chair: Oudom Hean, North Dakota State University

- *George Bailey Meets Tempestates: How Local Finance Strengthens Economic Resilience Through Extreme Weather Events.* Maryann Feldman, Arizona State University, Scott Langford, Arizona State University, Vinzenz Peters, Maastricht University, Mark Sanders, Maastricht University
- *Bank Competition and Business Formation in the U.S. Midwest.* Oudom Hean, North Dakota State University, Parker Jabas, North Dakota State University
- *Did the 2012 Spanish Law Reform to Protect Mortgage Debtors Modify Banks' Lending Behavior?* Rafael González-Val, Universidad de Zaragoza

Discussants:

- Oudom Hean, North Dakota State University
- Rafael González-Val, Universidad de Zaragoza
- Scott Langford, Arizona State University

114. Advancing Measurement Methods
Saturday | 2:45 pm-4:45 pm | Sierra A

Chair: Takahiro Yoshida, The University of Tokyo

- *Fine-grained Population Estimates: Infusing Deep Learning into Dasymetric Mapping of Buildings.* Junjun Yin, Pennsylvania State University, Guangqing Chi, Pennsylvania State University
- *Quantifying the Federal Reserve Beige Book with GPT-4.* Wade Litt, Denison University
- *A Location Quotient with Intra-Relationships: Compositional Data Analysis-Based Approach.* Takahiro Yoshida, The University of Tokyo, Takumi Yoshida, Kobe University, Daisuke Murakami, The Institute of Statistical Mathematics, Hajime Seya, Kobe University

Discussants:

- Wade Litt, Denison University
- Takahiro Yoshida, The University of Tokyo
- Junjun Yin, Pennsylvania State University

115. Geography of Agriculture
Saturday | 2:45 pm-4:45 pm | Sierra B

Chair: Andy Hira, Simon Fraser University

- *Tracing the Geography of Agriculture: Shift-Share Analysis of Major Crop Acreage in the U.S. from 1890 to 2017.* Zheng Tian, Pennsylvania State University, Stephan Goetz, Pennsylvania State University, Claudia Schmidt, Pennsylvania State University
- *Sustainable Farming-The Future for US Agriculture: Logit Model Approach.* George Owusu-Antwi, Central State University, Saima Bashir, Central State University
- *Examining Rural Productivity in Brazil: A Biome-based Analysis of Large-Scale and Family Farming.* Rafael Faria de Abreu Campos, Federal University of Viçosa, Edson Domingues, Federal University of Minas Gerais, Aline Magalhaes, Federal University of Minas Gerais, Tarik Marques do Prado Tanure, Federal University of Uberlândia
- *Establishing Cooperation across Agricultural Clusters: Lessons from the Cranberry Industry.* Andy Hira, Simon Fraser University, Neil Reid, University of Toledo, Stephan Goetz, Pennsylvania State University, Elizabeth Dobis, USDA Economic Research Service

Discussants:

- George Owusu-Antwi, Central State University
- Rafael Faria de Abreu Campos, Federal University of Viçosa
- Andy Hira, Simon Fraser University
- Zheng Tian, Pennsylvania State University

Walking Tour
**Barrio Logan: Craft Breweries
in a LatinX Neighborhood**

Saturday, November 18, 2023
3:15 PM - 5:15 PM

Organizers: Julie Wartell (UC-San Diego) and Neil Reid (University of Toledo)

Tour Guide: David Favela (Owner: Border X Brewing)

This walking tour will focus on the role of craft breweries in the economy of Barrio Logan, a LatinX neighborhood in San Diego. Tour guide David Favela (Owner of Border X Brewing) will discuss his experience starting a brewery in Barrio Logan. Topics covered will include why David chose this location, working with the City's Planning Department, their target audience, the brewery's role in the neighborhood, and other community development issues. The tour will include visits to Border X Brewing and Mujeres Brew House (the first LatinX, women-founded and operated brewery in San Diego).

Pre-registration is required. The cost of the tour is \$40, which includes eight beer samples (4 at each brewery). If you would like to join the tour, but not sample the beer, the registration fee is \$5. Space is limited and allocated on a first-come/first-served basis. Please email at neil.reid@utoledo.edu for registration.

Participant Index

Abbasiharofteh, Milad (m.abbasiharofteh@rug.nl): 110
Abdeljawad, Yousef (yousef.abed.1989@hotmail.com): 45
Acquah-Sarpong, Richard (acquahsr@oregonstate.edu): 89
Afzal, Hania (hafzal2@huskers.unl.edu): 107
Ahmed, Usman (um.ahmed@mail.utoronto.ca): 19
Ahn, Kunwon (ahn@iastate.edu): 89
Akgun, Oguzhan (Oguzhan.Akgun@u-bourgogne.fr): 78
Albrecht, Tobias (talbreal21@alumnes.ub.edu): 11
Alfaro, Fernanda (alfarog3@msu.edu): 30
Almeida, Renan (renanp.almeida@gmail.com): 74
Alvim, Augusto (augusto.alvim@puccs.br): 49,102
Alzate, Maryury (maryuab@gmail.com): 6
Amalbert, Karina (kba16b@fsu.edu): 38
Amara, Mohamed (mohamed.amara.isg@gmail.com): 97
Amaral, Pedro (pedroamaral@cedepar.ufmg.br): 22,70
Amaral, Pedro (pedrovma@gmail.com): 33,70
An, Yongsoo (ysan@seoulshinbo.co.kr): 72
An, Yuulin (yuulin.an@colostate.edu): 32
Andersson, Martin (martin.andersson@bth.se): 75
Ando, Tsubasa (ando.160@stn.nitech.ac.jp): 56
Andries, Alin (alin.andries@uaic.ro): 33
Andris, Clio (clio.andris@gmail.com): 34
Anselin, Luc (anselin@uchicago.edu): 22,70
Appleyard, Bruce (bappleyard@sdsu.edu): 4, 43
Araujo, Inacio (inaciofaj@gmail.com): 45,46,59
Arbex, Marcelo (arbex@uwindsor.ca): 81
Arbia, Giuseppe (giuseppe.arbia@unicatt.it): 51,70
Arcos, Ariel (arielarcos2013@gmail.com): 99
Arguello, Ricardo (arguello.ricardo@gmail.com): 6
Aroca, Patricio (patricio.aroca@unab.cl): 13
Atnoorkar, Swaroop (swaroop.atnoorkar@nrel.gov): 101
Auld, Joshua (jauld@anl.gov): 92
Avery, Greg (greg.avery@nrel.gov): 31,91
Awuku-Budu, Christian (christian.awuku-budu@bea.gov): 5
Azzoni, Carlos (cazzoni@usp.br): 18,111
Bae, Jung (jungbae@kpmg.com): 39
Baerlocher, Diogo (baerlocher@usf.edu): 25
Baez, Carlos (cabaez@gmail.com): 104
Baik, Jiwon (jiwonbaik@ucsb.edu): 47,57
Ballantyne, Patrick (P.Ballantyne@liverpool.ac.uk): 85
Ballas, Dimitris (d.ballas@rug.nl): 23,41,110
Bao, Qin (baoqin@amss.ac.cn): 26
Barba, Izaskun (izaskun.barba@unavarra.es): 12

Barbieri, Rafael (Rafael.Barbieri@wri.org): 59
Bardaka, Eleni (ebardak@ncsu.edu): 4
Bartholomae, Florian (Florian.Bartholomae@munich-business-school.de): 12
Bashir, Saima (sbashir@centralstate.edu): 111,115
Bastos, Suzana Quinet (quinet.bastos@ufjf.edu.br): 25
Batabyal, Amit (aabgsh@rit.edu): 11,71,109
Batch, Andrea (andrea.batch@bea.gov): 5
Batey, Peter (Pwjbatey@liverpool.ac.uk): 28
Bay, Franziska (f.bay@rug.nl): 37
Beladi, Hamid (Hamid.Beladi@utsa.edu): 11,71
Belbe, Stefana (stefanacioban@yahoo.com): 33
Belleville, Douglas Eric (belleville.11@buckeyemail.osu.edu): 88
Bellmann, Lisa (lisa.bellmann@iab.de): 37
Bentley, Rebecca (brj@unimelb.edu.au): 98
Bera, Anil (abera@illinois.edu): 51,61
Berman, Eli (elib@ucsd.edu): 17
Bi, Yilin (yilin.bi@ruc.edu.cn): 107
Bian, Xun (xun.bian@unt.edu): 74
Biehl, Amelia (abiehl@fgcu.edu): 96
Bivand, Roger (roger.bivand@nhh.no): 70
Bjerke, Lina (lina.bjerke@ju.se): 92
Blake, Christopher (christopher.blake@emory.edu): 90,100
Boarnet, Marlon (boarnet@usc.edu): 35
Bognar, Levi (levi.bognar@chi.frb.org): 107
Bolivar, Maria Fernanda (mariaf.bolivar@urosario.edu.co): 6
Bond-Smith, Steven (bondsmith@hawaii.edu): 24,66,92
Bone, Clara (bone@ohio.edu): 88
Bonet, Jaime (jaimebonet@yahoo.com): 27
Bosanquet, Camilla (cbosanqu@gmu.edu): 17
Bouman, Loes (l.bouman@rug.nl): 41
Bounds, Bonnie (bebounds@gmail.com): 30
Bowen, Eric (eric.bowen@mail.wvu.edu): 101
Brazil, Noli (nbrazil@ucdavis.edu): 98
Bridgman, Benjamin (benjamin.bridgman@bea.gov): 5
Briggeman, Brian (bbrigg@k-state.edu): 50
Brixy, Udo (udo.brixy@gmx.de): 37
Brown, Jason (jason.brown@kc.frb.org): 69
Brunow, Stephan (stephan.brunow@arbeitsagentur.de): 97
Buchan, Nancy (nancy.buchan@moore.sc.edu): 109
Buitrago-Mora, Diego (Diego.Buitrago@uab.cat): 98
Burdge, Bryce (bbu@sandag.org): 64
Burnett, Wesley (wesley.burnett@usda.gov): 49
Cameron, Michael (mcam@waikato.ac.nz): 25
Capello, Roberta (roberta.capello@polimi.it): 28,75
Caragliu, Andrea (andrea.caragliu@polimi.it): 28,75

Cardenas Morales, Diego Andres (diego-andres.cardenas-morales.1@ulaval.ca): 92
Cardoso, Gessica (gessicacps@yahoo.com.br): 59
Carpenter, Craig (cwcarp@msu.edu): 21,50,60,68
Carrascal-Incera, André (carrascalandre@uniovi.es): 46
Cartone, Alfredo (alfredo.cartone@unich.it): 78
Carvajal, Lidia (lcarvajal_2000@yahoo.com): 36
Cary, Michael (macary@vt.edu): 42,66
Castells-Quintana, David (david.castells.quintana@uab.cat): 88
Castiello, Maxence (maxence.castiello@univ-paris1.fr): 39
Castro, Gustavo Henrique Leite de (gustavocastro@usp.br): 111
Castro, Iana (iana.castro@sdsu.edu): 67
Centuriao, Daniel (dc00041@mix.wvu.edu): 85
Chae, Jiyoung (Jiyoung.Chae@rich.frb.org): 77
Chae, Kyu-hyeog (kh.chae@uos.ac.kr): 112
Chae, Kyu-hyeog (maya201268@gmail.com): 112
Chagas, André (achagas@usp.br): 20
Chalmers, Katherine (chalmers@csus.edu): 50
Champagne, Marie-Pier (marie-pier.champagne.5@ulaval.ca): 29,95
Chang, Huibin (dabingougou@gmail.com): 105
Chang, Shi Ryoung (chang.1846@osu.edu): 62
Chapel, Capucine (capucine.chapel@inrae.fr): 41
Chávez, Alicia (alicia.chavez@ce.ucn.cl): 13
Chen, Dongmei (chendm@queensu.ca): 35
Chen, Junliang (2022100454@ruc.edu.cn): 103
Chen, Meng-Ting (mchen2@scu.edu.tw): 79
Chen, Susan (ecsusan@vt.edu): 66
Chen, Wei (2018201247@ruc.edu.cn): 103
Chen, Wei (weichenecon@ruc.edu.cn): 82,103
Chen, Yong (yong.chen@oregonstate.edu): 26
Chen, Youning (youning2@illinois.edu): 31
Chen, Yuzhou (yuzhouchen@usf.edu): 94
Chi, Guangqing (gfc5047@psu.edu): 114
Chih, Yao-Yu (y_c66@txstate.edu): 10
Chin, Sayorn (chins@lafayette.edu): 32
Cho, Seonga (seonga_cho@ucsb.edu): 57
Cho, Seongmoon (seongmoc@usc.edu): 90
Cho, Yoona (iud.yoona0207@snu.ac.kr): 105
Choi, Dohyeong (ehgudchl@snu.ac.kr): 74
Choi, Sangwon (cswhg1@snu.ac.kr): 24
Christiaensen, Luc (lchristiansen@worldbank.org): 97
Chun, Yongwan (ywchun@utdallas.edu): 94
Chung, Grace (cchu@sandag.org): 64
Church, Rick (rickchurch@ucsb.edu): 47,57,67
Cicero, Vinicius (Vinicius.Cicero@colostate.edu): 32,60
Ciucci, Laura (laura.ciucci@gssi.it): 89

Clarens, Andres (afc7r@virginia.edu): 59
Clarke, Graham (g.p.clarke@leeds.ac.uk): 100
Clower, Terry (tclower@gmu.edu): 17,54
Cohen, Denton (dentonco@usc.edu): 17
Colletta, Aaron (aaron.colletta@unlv.edu): 41
Collinson, Simon (s.collinson@bham.ac.uk): 46
Comandon, Andre (comandon@usc.edu): 35
Compagnucci, Fabiano (fabiano.compagnucci@gssi.it): 24
Connolly, Kevin (kevin.connolly@hotmail.co.uk): 11
Connor, Dylan (d.c@asu.edu): 67
Conroy, Tessa (tessa.conroy@wisc.edu): 48,55,58,66,68
Cortinovic, Nicola (n.cortinovic@uu.nl): 10
Coulson, Edward (n.edward.coulson@gmail.com): 74
Court, Christa (ccourt@ufl.edu): 59, 103
Crampton, Benjamin (benjamin.crampton@bankofengland.co.uk): 87
Credit, Kevin (kevin.credit@mu.ie): 19
Cuambe, Ines (ines.cuambe@gmail.com): 18
Cuellar, Sebastian (sebastian.cuellar@alumnos.ucn.cl): 99
Cuellar, Sebastian (sebastian.cuellar01@ucn.cl): 13
Cunningham, Evan (cunni640@umn.edu): 103
Curtin, Kevin (kmcurtin@ua.edu): 47
Dahlberg, Matz (matz.dahlberg@ibf.uu.se): 29
DAI, RUNYU (dai.runyu.r1@dc.tohoku.ac.jp): 61,62
Dal Molin, Martina (martina.dalmolin@gssi.it): 24,89
Dall'erba, Sandy (dallerba@illinois.edu): 20,28,31,49,59
Dargel, Lukas (lukas.dargel@tse-fr.eu): 15
Das, Biswa (bdas@iastate.edu): 66
Davatgari, Amir (adavat2@uic.edu): 92
de Jong, Robert (de-jong.8@osu.edu): 62
de la Torre Cuevas, Fernando (fernando.delatorre@usc.es): 91
Del Bo, Chiara F. (chiara.delbo@unimi.it): 11
Del Castillo, Ma. Flordeliza (flizdelcastillo@gmail.com): 56
Deller, Steven (scdeller@wisc.edu): 48,60,66
Delmelle, Elizabeth (delmelle@design.upenn.edu): 19
Deming, Kristopher (demingkr@msu.edu): 50,60
Deng, Nanxin (dengnx@ecust.edu.cn): 96
Dentinho, Tomaz (tomazdentinho@uac.pt): 18
Derksen, Laura (laura.derksen@rotman.utoronto.ca): 81
Detotto, Claudio (detotto_c@univ-corse.fr): 89
Dexter, Sue (shdexter@usc.edu): 17
di Paolo, Antonio (antonio.dipaolo@ub.edu): 23
Dias, Julia (julianovaesdias@gmail.com): 33
Dias, Lucas (lucas.dias@fgv.edu.br): 32
Dinterman, Robert (robert.dinterman@usda.gov): 58
Dobis, Elizabeth (eadobis@gmail.com): 32,68,115

Dodge, Somayeh (sdodge@ucsb.edu): 57,94
Dogan, Osman (osmandogan@itu.edu.tr): 61
Domingues, Edson (domingues.edson@gmail.com): 59,115
Donaghy, Kieran (kpd23@cornell.edu): 17,45
Dong, Ziyue 'Davia' (zy.dong@mail.utoronto.ca): 82
Du, Rui (rich07rdu@hotmail.com): 69,96
Dube, Jean (jean.dube@esad.ulaval.ca): 29,41,82,92,95
Dunn, Abe (abe.dunn@bea.gov): 5
Dupor, Bill (billdupor@gmail.com): 5
Dzunic, Marija (marija_dzunic@ni.ac.rs): 35
Echeverri Figueroa, Vanessa (vanessa610@ucsb.edu): 57,67
Edin, Per-Anders (per-anders.edin@nek.uu.se): 29
Ehlert, Andree (aehlert@hs-harz.de): 54
Elhorst, Paul (j.p.elhorst@rug.nl): 15,34
Embury, Jessica (jembury8568@sdsu.edu): 67
Erfanian, Elham (el.erfania@gmail.com): 52
Erlebacher, Gordon (gerlebacher@fsu.edu): 81
Falorsi, Piero Demetrio (piero.falorsi@gmail.com): 78
Falorsi, Stefano (stfalorsi@istat.it): 78
Fan, Linlin (lpf5158@psu.edu): 6,77
Fang, Kerry (lfang3@fsu.edu): 38,81,93
Fang, Limin (limin.fang@sauder.ubc.ca): 19
Faria de Abreu Campos, Rafael (rfacampos@ufv.br): 115
Feder, Tal (talfeder@soc.haifa.ac.il): 38
Feldman, Maryann (Maryann_Feldman@kenan-flagler.unc.edu): 113
Feng, Xin (Selena) (selena.feng@ou.edu): 47,57
Fernandes Tomon Avelino, Andre (Andre.FernandesTomonAvelino@nrel.gov):
20,27,31,49,59, 103
Ferreira Neto, Amir (aborgesferreiraneto@fgcu.edu): 26,96
Ferreira, João Pedro (joao.ferreira@virginia.edu): 59,91
Ferreira, Sandro de Freitas (sandroffbr@gmail.com): 25
Ferris, Michael (ferris@cs.wisc.edu): 17
Fierro, Pedro (pedro.fierro@uai.cl): 13
Firmino Costa da Silva, Diego (diego.firmino@ufrpe.br): 25
Fisher, Monica (monicaf@uidaho.edu): 55
Fleming Munoz, David (david.fleming@csiro.au): 7,27
Folch, David (david.folch@nau.edu): 19
Fortuna, Mario (mario.ja.fortuna@uac.pt): 86
Fotopoulos, Georgios (g.n.fotopoulos@gmail.com): 37
Freguglia, Ricardo (ricardo.freguglia@ufjf.br): 81
French, Sydney (sydney.french@mail.wvu.edu): 4
Friesz, Terry (tfriesz@psu.edu): 17
Fuchs, Michaela (michaela.fuchs@iab.de): 97
Fujimi, Toshio (fujimi.toshio.7x@kyoto-u.ac.jp): 56
Gao, Song (song.gao@wisc.edu): 77

Gao, Xiang (williamgao1993@163.com): 26
Garcia-Lopez, Miquel-Angel (MiquelAngel.Garcia@uab.cat): 98
Garcia, Andres (garciasuaza@gmail.com): 6,14,95
Garduño Rivera, Rafael (rgarduno@unav.es): 6,18,30
Gasparote, Maurício (mgasparote@gmail.com): 102
Gehrke, Steven (steven.gehrke@nau.edu): 4
Gholizadeh, Mahsa (mahsa.gholizadeh@bea.gov): 5
Gianfranco, Piras (gianfranco.piras@unich.it): 78
Gianmoena, Lisa (lisa.gianmoena@unipi.it): 12
Gibbons, Joseph (jgibbons@sdsu.edu): 110
Gibson, John (jkgibson@waikato.ac.nz): 25
Gifford, Jonathan (jgifford@gmu.edu): 101
Goetz, Stephan (sgoetz@psu.edu): 6,7,10,84,115
Goldstein, Joshua (josh.goldstein@virginia.edu): 58
Gómez-Hernández, Luz Yadira (luzyadira.gomez@autonoma.cat): 52,95
Gomez, Dominic (dg245422@ohio.edu): 52,88
González-Val, Rafael (rafaelg@unizar.es): 39,102,113
Gore, Christina (christina.gore@nist.gov): 27
Goulbourne, Rushaine (rdgoulbourne@crimson.ua.edu): 26
Green, John (john.green@msstate.edu): 69
Grubestic, Tony (tony.grubestic@ucr.edu): 47,57
Guo, Dongmei (guodongmeicufe@163.com): 96
Guo, Tao (sunnygt569@163.com): 96
Gusnanto, Arief (a.gusnanto@leeds.ac.uk): 12
Gwin, Lauren (lauren.gwin@oregonstate.edu): 50
Ha, Jaehyun (jaehyunh@usc.edu): 18
Habib, Muhammad Ahsanul (ahsan.habib@dal.ca): 105,109
Haddad, Eduardo (ehaddad@usp.br): 13,27,45,46,59
Hadjidimitriou, Natalia Selini (selini@unimore.it): 93
Hallegatte, Stephane (shallegatte@worldbank.org): 26
Han, Luyi (lkh5474@psu.edu): 7,10,84
Han, Xiaoyi (xiaoyihan@xmu.edu.cn): 77
Harris, Thomas (harris@unr.edu): 7,55
Hashimoto, Hiroyuki (hiro@mba.u-hyogo.ac.jp): 108
Hawkins, Jason (jason.hawkins@unl.edu): 19,31,107
He, Longteng (andrew.he@dal.ca): 105
Hean, Oudom (oudom.hean@ndsus.edu): 113
Herath, Shanaka (shanaka.herath@uts.edu.au): 98
Herchenbach, Jody (Herchenbachj2@unk.edu): 50
Hewings, Geoffrey (hewings@illinois.edu): 45,46
Hicks, Michael (mhicks@bsu.edu): 76
Hideshima, Eizo (hideshima.eizo@nitech.ac.jp): 56
Hilal, Mohamed (mohamed.hilal@inrae.fr): 41
Hira, Andy (anil_hira@sfu.ca): 115
Hodge, Timothy (trhodge@oakland.edu): 42

Hong, Jinhyun (jinhyun.hong@uos.ac.kr): 112
Hood, Kyle (kyle.hood@bea.gov): 5
Hori, Keiichi (khorik@kwansai.ac.jp): 96
Hou, Jie (jie.hou@slu.edu): 93
Hsieh, Chih-Sheng (cshsieh@ntu.edu.tw): 33
Hu, Wanyang (wanyanhu@cityu.edu.hk): 72
Hu, Yujie (yujiehu@ufl.edu): 76
Huang, Tzu-Hsuan (5473sally@gmail.com): 86
Huang, Yi (yihuang@nau.edu.cn): 77
Huang, Yue (yh4283@nyu.edu): 87
Hung, Chi-Tung (ct@mail.mcu.edu.tw): 86,88
Huycke, Gail (gail.huycke@wisc.edu): 66
Hwang, Juwon (hoangb1@naver.com): 72
Ilamkar, Sumit (ilamkars@hawaii.edu): 66
Indra, Debarshi (indradebarshi@gmail.com): 105
Insa-Sánchez, Pau (pau.insa@unisi.it): 102
Ishikura, Tomoki (iskr@tmu.ac.jp): 95
Israel, Emil (emil.israel@technion.ac.il): 38
Ivanoski, Laurel (laurel.ivanoski@emory.edu): 90
Jabas, Parker (parker.jabas@ndsu.edu): 113
Jager, Wander (w.jager@rug.nl): 41
Jang, Jiwon (jjang27@asu.edu): 67
Jang, Seongman (sjang@mnu.ac.kr): 72
Jankovic Milic, Vesna (vesna.jankovic@eknfak.ni.ac.rs): 35
Jankowski, Piotr (pjankows@sdsu.edu): 67
Jarosz, Beth (bjarosz@prb.org): 64
Jeong, Harim (jhrhlss@snu.ac.kr): 108
John, Richard (richardj@usc.edu): 17
Jolley, G. Jason (jolleyg1@ohio.edu): 88
Jooste, Charl (cjooste@worldbank.org): 26
Jung, Eunah (ej254@cornell.edu): 41
Jung, Paul (Paul.Jung@inha.ac.kr): 104,112
Jung, Yeerim (yrjung@snu.ac.kr): 87
Jung, Youngwook (yj10@illinois.edu): 111
Kacher, Nicholas (nkacher@scrippscollege.edu): 58
Kajitani, Yoshio (kajitani.yoshio@kagawa-u.ac.jp): 45
Kane, Kevin (ktkane@usc.edu): 76
Kang, Wei (wei.kang@unt.edu): 104
Kang, Yankun (kangyankun@126.com): 69
Karki, Sagun (skarki9@huskers.unl.edu): 31
Kawaguchi, Nobuko (n.kawaguchi@aitech.ac.jp): 56
Kawamoto, Kiyomi (kawamoto021@toyo.jp): 38
Ke, Yue (yke@anl.gov): 107
Keeler, Zach (zkeeler@ttu.edu): 42,58
Keene, Thomas (thomasc.keene@gmail.com): 21,68

Kekezi, Orsa (orsa.kekezi@sofi.su.se): 36
Kellis, Lucile (lucileg@alum.mit.edu): 39
Khoirunurrofik, Khoirunurrofik (khoirunurrofik@ui.ac.id): 12
Kilar, Wioletta (wioletta.kilar@gmail.com): 100
Kim, Ayoung (a.kim@msstate.edu): 32,69,72
KIM, Brian H.S. (briankim66@snu.ac.kr): 21,24
Kim, Donghyun (hyunurban@hanyang.ac.kr): 18
Kim, Hyun (hkim56@utk.edu): 94
Kim, Hyun (hkim9129@gmail.com): 88
Kim, Jin Eon (jineon@snu.ac.kr): 102,108
Kim, Nayeon (nayeon.kim2@utdallas.edu): 41
Kim, Sekwen (skim3@laverne.edu): 110
Kim, Seohee (seohee.kim@duke.edu): 29,74
Kim, Sowon (kim.7139@osu.edu): 31
Kim, Swales (j.k.swales@strath.ac.uk): 11
Kim, Yonsu (yonsu.kim@unlv.edu): 72
Klaesson, Johan (johan.klaesson@ju.se): 36
Klaiber, H. Allen (klaiber.16@osu.edu): 82
Klein, Yehuda (yklein@brooklyn.cuny.edu): 49,56
Klier, Thomas (thomas.klier@chi.frb.org): 107
Knaap, Elijah (eknaap@sdsu.edu): 34,70,95
Knapp, Elijah (elijah.knaap@ucr.edu): 95
Kohl, Kristina (kkohl@kpmg.com): 39
Koley, Malabika (mkoley2@illinois.edu): 51
Komarek, Tim (Tim.Komarek@colostate.edu): 7,21,32,48,50,60,66,69,76
Komarek, Timothy (tkomarek@odu.edu): 55
Koster, Sierdjan (sierdjan.koster@rug.nl): 23
Kourtit, Karima (k_kourtit@hotmail.com): 1,86
Kraft, Kelcie (kelcie.kraft@nrel.gov): 101
Kremers, Hans (hkremers@icloud.com): 86
Kreutzen, Caroline (caroline.kreutzen@emory.edu): 100
Kures, Matthew (matthew.kures@wisc.edu): 55,66
Kwok, Jeremy (jeremy.kwok@bankofengland.co.uk): 87
Kwon, Daeyoung (tonykwon@snu.ac.kr): 24
Kwon, Kihyun (khkwon@ucdavis.edu): 105
Lagemann, Andree (lagemann@hwwi.org): 54
Lambais, Guilherme (guilherme.lambais@unb.br): 25
Lambert, Dayton (dayton.lambert@okstate.edu): 69,93
Lamers, Patrick (Patrick.Lamers@nrel.gov): 91
Langford, Scott (scott.langford@asu.edu): 113
Langholz Carstensen, Christian (ch.carstensen@econ.ku.dk): 97
Laurent, Thibault (thibault.laurent@tse-fr.eu): 15
Le Gallo, Julie (julie.le-gallo@inrae.fr): 41
Lee, Changho (cxl200029@utdallas.edu): 41
Lee, Gi-Eu (d12786@gmail.com): 52

Lee, Haeryung (starthr@snu.ac.kr): 105
Lee, Hazel (yl3276@cornell.edu): 21
Lee, Hyejin (leehj22@snu.ac.kr): 105
Lee, Jeehee (jeehee.lee@unlv.edu): 72
Lee, Jieun (jieun.lee@emory.edu): 34
Lee, Narae (nlee25@gmu.edu): 71
Lee, Sangyoon (sylee@inha.ac.kr): 112
Lee, Seongwoo (seonglee@snu.ac.kr): 74
Lee, Soomi (slee4@laverne.edu): 28,29,42
Legros, Diego (diego.legros@u-bourgogne.fr): 29,95
Lehe, Lewis (lehe@illinois.edu): 99
Lenzi, Camilla (camilla.lenzi@polimi.it): 48,75
Lewin, Paul (plewin@uidaho.edu): 55
Lewis, Kristin (Kristin.Lewis@dot.gov): 101
Li, Chao (chao.li@auckland.ac.nz): 25
Li, Jiahui (leejiahui@inha.edu): 112
Li, Mengming (mengming.li@ufl.edu): 31,59,91
Li, Wenzheng (wl563@cornell.edu): 98
Li, Xiaoyin (xiaoyinl@iastate.edu): 89
Li, Yun (li.10490@osu.edu): 39
Li, Yuxiang (liyuxiang1999@gmail.com): 109
Li, Zekun (li.12350@buckeyemail.osu.edu): 20
Liao, Wen-Chi (wcliao@mit.edu): 34
Lim, Jaewon (jaewon.lim@unlv.edu): 41,72,86
Lin, Sainan (sainan.lin@whu.edu.cn): 24
Lin, Wen-Yen (wylin01@mail.mcu.edu.tw): 86,88
Lin, Xu (xulin88@vt.edu): 33
Link, Hildegaard (hildegaardl@earthlink.net): 49,56
Litt, Wade (wadehlitt@gmail.com): 114
Liu, Chun Fang (ewa886@gmail.com): 86
Liu, Eric (eli@sandag.org): 64
Liu, Huan (liu.huan.4p@kyoto-u.ac.jp): 45
Liu, Jiangwei (ljw3690@ruc.edu.cn): 82
Liu, Xiaolong (xiaolong.liu@rug.nl): 110
Livy, Mitchell (mlivy@fullerton.edu): 54,82
López-Bazo, Enrique (elopez@ub.edu): 11
Lopez, Juan carlos (juancarlos_lopez1@hotmail.com): 90
Losada Rojas, Lisa L (llosadar@unm.edu): 4
Lourenço de Souza, Livia (livialourenco16@gmail.com): 25
Loveridge, Scott (loverid2@msu.edu): 30
Low, Sarah (sarahalow@gmail.com): 7,21,32,50,55,60,66,69,76
Lozano Gracia, Nancy (nlozano@worldbank.org): 97
Lu, Daming (ludm@pku.edu.cn): 103
Lubell, Mark (mnlubell@ucdavis.edu): 30
Luo, Yilan (luoyilan@hnu.edu.cn): 34

Lyons, Matthew (m.lyons@bham.ac.uk): 46
Ma, Huanjia (h.ma.3@bham.ac.uk): 46
Ma, Michael (mima@sandag.org): 64
Madankara Kottayi, Nivedya (nmad@sandag.org): 64
Magalhaes, Aline (alinesm@cedepar.ufmg.br): 59,115
Maggie Parutta, Maggie (maggie.paruta@nyu.edu): 87
Maiti, Abhradeep (abhradeep.maiti@gmail.com): 105
Malandri, Caterina (caterina.malandri2@unibo.it): 94
Mamei, Marco (mm@noemail.edu): 93
Mandapati, Venkata Vijaya (vn520794@dal.ca): 105
Manganaris, Marina (mmangana@gmu.edu): 38,101
Mansour, Adelle (adelle.mansour@unimelb.edu.au): 98
Mantegazzi, Daniele (d.mantegazzi@rug.nl): 23
Marca, Luan (luan.marca@edu.pucrs.br): 49,102
Mare, Codruta (codruta.mare@econ.ubbcluj.ro): 14,33
Margaretic, Paula (paumargaretic@gmail.com): 15
Mari, Rebecca (rebecca.mari@bankofengland.co.uk): 87
Marques do Prado Tanure, Tarik (tariktanure@gmail.com): 115
Martin, Richard (rmart@uga.edu): 84
Martinez-Galarraga, Julio (julio.martinez@ub.edu): 102
Matano, Alessia (alessia.matano@uniroma1.it): 35
Matsuda, Yasumasa (yasumasa.matsuda.a4@tohoku.ac.jp): 62
Matsushima, Kakuya (matsushima.kakuya.7u@kyoto-u.ac.jp): 99
Matyas, Andreea (andreea.matyas@econ.ubbcluj.ro): 14
Maulana, Rifqi (ram545@cornell.edu): 90
McAllister, Andrew (amcallister@oakland.edu): 42
McCann, Philip (p.mccann@sheffield.ac.uk): 92
McCarthy, Lauren (lmccart5@gmu.edu): 4
McDermott, Mary (marymcdermott@college.harvard.edu): 55
McDermott, Thomas (thomas.mcdermott@Universityofgalway.ie): 88
McGranahan, David (david.mcgranahan@usda.gov): 68
McGranahan, Leslie (leslie.mcgranahan@chi.frb.org): 107
McGregor, Peter (p.mcgregor@strath.ac.uk): 11
Mclsaac, Florent (fmcisaac@worldbank.org): 26
Mellander, Charlotta (charlotta.mellander@ju.se): 92
Melstrom, Richard (rmelstrom@luc.edu): 48
Mendoza, Alfonso (alfonso.mendoza@banxico.org.mx): 85
Mendoza, Miguel Angel (mendozag@unam.mx): 36
Menon, Nikhil (nzm5492@psu.edu): 4
Mesa-Guerra, Carlos (cm956@cornell.edu): 36,97
Miller, Elizabeth (eam9536@nyu.edu): 87
Miller, Eric (eric.miller@utoronto.ca): 82
Miller, Gregory (gregory.miller@colostate.edu): 21
Miller, Ray (ray.miller@colostate.edu): 32
Mills, Devon (dm3167@msstate.edu): 69

Mizuno, Keizo (kmizuno@kwansei.ac.jp): 96
Mo, Taejun (taejunm2@illinois.edu): 20
Mohammadi, Motahare (mmoham73@uic.edu): 92
Mohammadian, Abolfazl (kouros@uic.edu): 92
Moldovan, Darie (darie.moldovan@econ.ubbcluj.ro): 33
Montanía, Claudia (cv.montania@gmail.com): 49
Mora, Jhon James (jjmora@icesi.edu.co): 81
Morisugi, Masafumi (morisugi@meijo-u.ac.jp): 38
Mortaheb, Reza (rezamortaheb@ucsb.edu): 67
Mudenda, Lackson D. (lacksonjnr.mudenda@gmail.com): 68
Muldrow, Melody (melodymuldrow@yahoo.com): 84
Muñoz, Kevin (komunozm@unal.edu.co): 95
Murakami, Daisuke (dmuraka@ism.ac.jp): 114
Muratori, Simona (simona.muratori@polimi.it): 35
Murray, Alan (amurray@ucsb.edu): 47,57,67,94
Naito, Tohru (tnaito@mail.doshisha.ac.jp): 108
Nakagawa, Mariko (nakagawam@ier.hit-u.ac.jp): 64
Nakidde, Lighton (lnakidde@iastate.edu): 66
Nam, Jinho (jinho.nam@inha.edu): 104
Nam, Kyung-Min (kmmnam@hku.hk): 59
Nara, Atsushi (anara@sdsu.edu): 67
Nardelli, Vincenzo (vincnardelli@gmail.com): 51,78
Nason, David (dhn0003@mix.wvu.edu): 66,71
Nava, Noe (Noe.Nava@usda.gov): 31
Neal, Zachary (zpneal@msu.edu): 34
Newes, Emily (emily.newes@nrel.gov): 101
Nguyen, Toan (ruong.nguyen@anu.edu.au): 24
Nicolini, Rosella (rosella.nicolini@uab.cat): 23,48,58,68
Nijkamp, Peter (pnijkamp@hotmail.com): 1,17,28,86
Nilsson, Isabelle (inilss1@uncc.edu): 9,19
Nishigaki, Yasuyuki (nisigaki@econ.ryukoku.ac.jp): 13
Nkonya, Ephraim (ephraim.nkonya@usda.gov): 111
Nobre, Carlos (cnobre.res@gmail.com): 59
Noi, Evgeny (noi@ucsb.edu): 94
Noritake, Toshie (noritake_toshie@tamano.co.jp): 56
Nuñez, Hector (hector.nunez@cide.edu): 85
Nutting, Andrew (anutting@brynmaur.edu): 84
Obaco, Moisés (moises.obaco@ucn.cl): 35
Ocampo, Sergio (socampod@uwo.ca): 5
Ochsen, Carsten (carsten.ochsen@uni-rostock.de): 97
Oh, Changwha (coh4@vols.utk.edu): 94
Oh, Seunghoon (soh78@uis.edu): 99
Okuyama, Yasuhide (okuyama@kitakyu-u.ac.jp): 45,56
Ong, Paul (pmong@ucla.edu): 103
Orazem, Peter (pfo@iastate.edu): 21,55

Orlando, Anthony (anthony.w.orlando@gmail.com): 64
Orlando, Anthony (aworlando@cpp.edu): 64
Oshan, Taylor (toshan@umd.edu): 104
Osth, John (johnosth@oslomet.no): 35,93
Ota, Mitsuru (ota@sk.tsukuba.ac.jp): 92
Owusu-Antwi, George (gowusu-antwi@centralstate.edu): 111,115
Ozturk, Orgul (odozturk@moore.sc.edu): 109
Pan, Xiuxiang (x.pan@rug.nl): 23
Pan, Yuxuan (ybp5073@psu.edu): 6
Pandey, Ayush (ayushp3@illinois.edu): 99
Paradizo Medina, Mikaela (mik.paradizo@gmail.com): 25
Parajuli, Bikram (bikramparajuli8@ou.edu): 47,57
Paredes, Dusan (dparedes@ucn.cl): 13,27,30,99
Parisa, Javadi (kcw8qq@virginia.edu): 59
Parish, Esther (parishes@ornl.gov): 14
Park, Gina Yeonkyeong (yp394@cornell.edu): 112
Park, in Kwon (parkik@snu.ac.kr): 87,102,108
PARK, Jin A (paran42@hanyang.ac.kr): 18
Park, JoonYup (joonyup.a.park@gmail.com): 103
Partridge, Mark (partridge.27@osu.edu): 58
Pascual, Pedro (ppascual@unavarra.es): 12
Patrício, Pedro (pedropatricio7@gmail.com): 74
Patrick, Carlianne (cpatrick@gsu.edu): 97
Patuelli, Roberto (roberto.patueli@unibo.it): 94
Paul, John (john.paul@brooklyn.cuny.edu): 49,56
Paul, Laura (laura.anne.paul@gmail.com): 88
Pena, Anita (anita.pena@colostate.edu): 60
Pender, John (john.pender@usda.gov): 21,58,111
Pender, John (johnpender2009@gmail.com): 58
Perez, Javier (gjavierperezv@gmail.com): 27
Pérez, Manuela (mp5841@nyu.edu): 87
Perobelli, Fernando (fernandosalgueiro.perobelli@gmail.com): 46,59
Perucca, Giovanni (giovanni.perucca@polimi.it): 48
Pesaran, M. Hashem (pesaran@usc.edu): 62
Petach, Luke (luke.petach@belmont.edu): 7
Peters, Vinzenz (vinzenz.peters@maastrichtUniversity.nl): 113
Phan, Duy-Anh (ang.phan@monash.edu.au): 24
Piedra Peña, Juan A. (JuanAndres.Piedra@uab.cat): 23
Pietrostefani, Elisabetta (e.pietrostefani@liverpool.ac.uk): 12
Pinate, Adriana C. (adriana.pinate@gssi.it): 89,109
Pipa, Tony (TPipa@brookings.edu): 66
Piras, Gianfranco (gpiras@mac.com): 70,104
Pirotte, Alain (Alain.Pirotte@u-paris2.fr): 61,78
Postiglione, Paolo (postigli@unich.it): 78
Price, Ashleigh (anprice5@crimson.ua.edu): 47

Puente-Ajovín, Miguel (mpajovin@unizar.es): 110
Pupa, Rylee (ryleepupa@ucsb.edu): 57
Pyrialakou, Dimitra (vdpyrial@gmail.com): 4
Qiam, Shirin (sqiam2@illinois.edu): 99
Qian, Haifeng (haifeng-qian@uiowa.edu): 37
Rabasco, Michele (michele.rabasco@unibo.it): 94
Ramos, Raul (rramos@ub.edu): 23
Rangarajan, Shriya (shrrajan@ucdavis.edu): 30,38
Redfearn, Christian (redfearn@usc.edu): 64
Reggiani, Aura (aura.reggiani@unibo.it): 93,94
Regmi, Sabina (sr2117@msstate.edu): 69
Reid, Neil (neil.reid@utoledo.edu): 6,18,30,76,115
Reis, Eustáquio (ejreis1@gmail.com): 25
Rey, Sergio (srey@sdsu.edu): 34,70
Richardson, Kathrine (kathrine.richardson@sjsu.edu): 37
Ridley, William (wridley@illinois.edu): 20,31
Righi, Paolo (parighi@istat.it): 78
Rini, Darlene (drini@ucsb.edu): 57
Rios, Vicente (vicente.rios@unipi.it): 12
Rocha, Ademir (ademir.rocha@usp.br): 59
Rodnyansky, Seva (srodnyansky@oxy.edu): 35
Rogerson, Peter (rogerson@buffalo.edu): 24
Roig Sabaté, José Luis (josepluis.roig@uab.es): 23
Rose, Adam (adam.rose@usc.edu): 17,45,56
Roskruge, Matt (M.Roskruge@massey.ac.nz): 69
Ross, Amanda (aross@cba.ua.edu): 26
Rossetti, Rebecca (rebecca.rossetti2@unibo.it): 94
Roy, Graeme (graeme.roy@glasgow.ac.uk): 11
Royuela, Vicente (vroyuela@ub.edu): 23,35
Runge, Kristin (kristin.runge@wisc.edu): 66
Rupasingha, Anil (anil.rupasingha@ers.usda.gov): 58
Sacco, Joao Gabriel (jgsacco@usp.br): 13
Sadayuki, Taisuke (tai.sadayuki@gmail.com): 64
Sanders, Mark (m.sanders@maastrichtUniversity.nl): 113
Sanzo-Navarro, Marcos (marcossn@unizar.es): 110
Sargento, Ana (ana.sargento@ipleiria.pt): 91
Sarrias, Mauricio (mauricio.sarrias@usalca.cl): 70,104
Sasahara, Akira (akirasasahara@gmail.com): 36
Sass, Karina (karinasass@gmail.com): 59
Sayago, Juan (juantomas.sayago@gmail.com): 96
Schintler, Laurie (lschintl@gmu.edu): 17
Schmidt, Claudia (cschmidt@psu.edu): 115
Schmidt, Stephan (sjs96@cornell.edu): 98
Schoenberg, Alina (alina.schoenberg@fh-krems.ac.at): 12
Schvartzman, David (dschvart@ou.edu): 57

Serenini, Renan (renan.serenini@uniroma1.it): 22
 Serrano, Mònica (monica.serrano@ub.edu): 11
 Sevinc, Deniz (denizsvnc@gmail.com): 75
 Seya, Hajime (hseya@people.kobe-u.ac.jp): 114
 Shibusawa, Hiroyuki (shibusawa.hiroyuki.dc@tut.jp): 109
 Shabanpour, Ramin (ramin.shabanpour@unf.edu): 92
 Shearmur, Richard (Richard.shearmur@McGill.ca): 92
 Sheng, Yuxue (nkshengyuxue@126.com): 10
 Shobe, William (shobe@virginia.edu): 59
 Siedentop, Stefan (stefan.siedentop@tu-dortmund.de): 98
 Silveira Neto, Raul (rau.silveira@uol.com.br): 79
 Silveira Neto, Raul (raul.silveirant@ufpe.br): 79
 Sinclair, Wilson (wilson.sinclair@usda.gov): 5
 Singleton, Alex (ufcnale@liverpool.ac.uk): 85
 Skidmore, Mark (mskidmor@msu.edu): 30
 Sloggy, Matthew (matthew.sloggy@usda.gov): 107
 Sobrinho, Aurélio (aurelio.sobrinho@ufpe.br): 79
 Solis, Alberto (alberto.franco@nrel.gov): 20,27,31,49,59,91
 Song, Abraham (abraham.song@pepperdine.edu): 71
 Souza, Pedro (p.souza@qmul.ac.uk): 81
 Staley, Samuel (sstaley@fsu.edu): 81
 Stanković, Jelena (sjellenna@gmail.com): 35
 Stark, Chris (christopher.stark@wisc.edu): 66
 Stenberg, Majken (majken.stenberg@ibf.uu.se): 29
 Stephens, Heather (heather.stephens@mail.wvu.edu): 42,55,58,66,76
 Stephenson, Kendall (kendall.stephenson@colostate.edu): 60
 Stewart, Nathan (nathan.stewart@mail.utoronto.ca): 19
 Sturtevant, Lisa (lisa.sturtevant@brightmls.com): 54
 Sudderth, Erika (Erika.Sudderth@dot.gov): 101
 Sugasawa, Takeru (takeru.sugasawa@gmail.com): 64
 Suh, Tongjoo (tjsuh@pusan.ac.kr): 21
 Sui, Yumin (suiyumin0617@keio.jp): 36
 Sun, Ling Ling (649124396@qq.com): 13
 Sun, Weizeng (sunweizeng@gmail.com): 69,96
 Sun, Xiaojin (xsun3@utep.edu): 74
 Sutherland, Vincent (vas235@nau.edu): 19
 Swarzenski, Zoe (ZSwarzenski@brookings.edu): 66
 Tabuchi, Takatoshi (takatoshi.tabuchi@gmail.com): 25
 Taguchi, Emily (etaguchi@smail.uni-koeln.de): 36
 Tao, Ran (rtao@usf.edu): 94
 Taspinar, Suleyman (staspinar@qc.cuny.edu): 61
 Tatano, Hirokazu (tatano.hirokazu.7s@kyoto-u.ac.jp): 45,56
 Terzidis, Nikolaos (n.terzidis@rug.nl): 75
 Thanos, Sotirios (sotirios.thanos@manchester.ac.uk): 82
 Thill, Jean-Claude (Jean-Claude.Thill@uncc.edu): 104
 Thilmany, Dawn (dawn.thilmany@colostate.edu): 50

Thomas-Agnan, Christine (christine.thomas@tse-fr.eu): 15
 Tian, Zheng (ztian@psu.edu): 10,26,115
 Tian, Zheng (zzt36@psu.edu): 7,10,84,115
 Tirado-Fabregat, Daniel A. (Daniel.Tirado@uv.es): 102
 Tong, Daoqin (daoqin.tong@asu.edu): 57,67
 Tonucci, João (jontonucci@gmail.com): 74
 Tremblay, Diane-Gabrielle (dgtrembl@teluq.ca): 109
 Tsvetkova, Alexandra (Alexandra.tsvetkova@oecd.org): 75
 Turati, Riccardo (riccardo.turati@uab.cat): 23
 Tuttle, Steven (stuttle@bsu.edu): 55
 Tyndall, Justin (jtyndall@hawaii.edu): 19
 Ullah, Kazi (ullahkm@ornl.gov): 14
 Urg, Giovanni (G.Urg@city.ac.uk): 61,78
 Urso, Giulia (giulia.urso@gssi.it): 24,109
 van Duym, Dirk (dirk.vanduym@bea.gov): 7
 Van Leuven, Andrew (andrew.vanleuven@okstate.edu): 48
 Van Sandt, Anders (avansand@uwyo.edu): 50
 Varaku, Kerda (kvaraku@kpmg.com): 39
 Varela, Daniela (danielavarelatabares@gmail.com): 14
 Vera-Cabello, María (mvera@unizar.es): 110
 Veras, Henrique (henrique.veras@centre.edu): 25
 Vilain, Pierre (pvilain@kpmg.com): 39
 Wagner, Gary (Gary.Wagner@louisiana.edu): 60
 Walter, Daniel (daniel.walter@emory.edu): 90
 Wan, Guanghua (guanghuawan@yahoo.com): 69
 Wang, Bonnie (wangbonn@usc.edu): 54
 Wang, Congcong (wcc1170@zju.edu.cn): 25
 Wang, Haoying (halking.econ@gmail.com): 6,18,30,52
 Wang, Jinpeng (jinpengwang@ufl.edu): 76
 Wang, Xinyue (wangxinyue1209@ruc.edu.cn): 103
 Wang, Xuguang (xuguang.wang@ou.edu): 57
 Wang, Yixuan (wang.13917@osu.edu): 112
 Wang, Yu (yw1111@scarletmail.rutgers.edu): 24
 Waters, Keith (kwaters2@gmu.edu): 17,54
 Weber, Bruce (Bruce.Weber@oregonstate.edu): 55
 Wei, Ran (ran.wei@ucr.edu): 47,57,67
 Weiler, Stephan (stephan.weiler@colostate.edu): 7,21,32,50,55,60,66,69,76
 Weinstein, Amanda (aweinstein@uakron.edu): 32, 48,76
 Welter, Caroline (caroline.welter@mail.wvu.edu): 68
 Wen, Yaxuan (yaxuanwen@brandeis.edu): 38
 Wen, Yijia (yw20bn@fsu.edu): 81,93
 Westlund, Hans (hanswes@kth.se): 28
 Williams, Ryan (ryan.williams@usda.gov): 58
 Wilson, Houston (houston.wilson@ucr.edu): 30
 Winters, John (winters1@iastate.edu): 55,66,76

Wixe, Sofia (sofia.wixe@ju.se): 36
Wojan, Timothy (twojan@nsf.gov): 7,10,20,93
Wood, Jonathan (jonathan.wood-4@manchester.ac.uk): 6
Wornell, Emily (ejwornell@bsu.edu): 55,76
Xie, Senkai (s.xie@tie.nl): 103
Xiong, Yun (2776760679@qq.com): 79
Xu, Anqi (fiaxu@dof.ca.gov): 76
Xu, Corey (coreyxu@hkust-gz.edu.cn): 81
Xu, Minhong (minhong.xu@nyu.edu): 77,87
Xu, Ran (xu_ball0613@163.com): 26
Xu, Yilan (yilanxu@illinois.edu): 20,77
Yajima, Naonari (naonari.yajima@gmail.com): 64
Yamagata, Takashi (takashi.yamagata@york.ac.uk): 61
Yamashita, Eric (ericyama@hawaii.edu): 38
Yang, Cuihong (chyang@iss.ac.cn): 26
Yang, Cynthia (cynthia.yang@fsu.edu): 62
Yang, Ye (yeyang557@hotmail.com): 61
Yang, Yuanyuan (739271126@qq.com): 79
Yang, Zhenlin (zlyang@smu.edu.sg): 61,78
Yi, Jungmin (yijungmin@snu.ac.kr): 105
Yin, Junjun (jyin@psu.edu): 114
Yokoi, Takahisa (t_yokoi@shokei.ac.jp): 77
Yonemoto, Kiyoshi (yonemoto@tcue.ac.jp): 35
York, Jack (jack.york@bea.gov): 5
Yoshida, Takahiro (yoshida@csis.u-tokyo.ac.jp): 114
Yoshida, Takumi (239t138t@stu.kobe-u.ac.jp): 114
Yu, Danlin (yud@montclair.edu): 93
Yu, Jialing (jialing.yu@ruc.edu.cn): 103
Yu, Manzhu (mqy5198@psu.edu): 114
Yuan, Lilin (1120160783@mail.nankai.edu.cn): 20
Yuan, Tao (yuantao@cugb.edu.cn): 35
Yun, Minjae (yun@law.ucla.edu): 100
Yun, Seong (seong.yun@msstate.edu): 32
Zahran, Sammy (sammy.zahran@colostate.edu): 32
Zeballos, Eliana (eliana.zeballos@usda.gov): 5
Zemanek, Steven (steven.zemanek@bea.gov): 5
Zhan, Jinchuan (zhanjinchuan0318@outlook.com): 99
Zhang, Alicia (zhanga@bu.edu): 101
Zhang, Jiakai (jiakai.zhang@nmt.edu): 26,79
Zhang, Jianhua (jianhua.zhang@rug.nl): 110
Zhang, Joey (jz17d@fsu.edu): 81
Zhang, Kevin (Kevin.Zhang@dot.gov): 101
Zhang, Min (zhangmx@suda.edu.cn): 72,96
Zhang, Ryan (ryanzhangxyz@gmail.com): 108
Zhang, Ting (tzhang@ubalt.edu): 108

Zhang, Wenjia (zhangwj@pkusz.edu.cn): 103
Zhang, Xiaochen (xiaochen.zhang@dukekunshan.edu.cn): 72
Zhang, Xiaochen (xz256@duke.edu): 72
Zhang, Yimin (Yimin.Zhang@nrel.gov): 27,31,91
Zheng, Huixin (zheng@scag.ca.gov): 76
Zheng, Ji (zhengji@hku.hk): 59
Zhenhua, Chen (chen.7172@osu.edu): 20,31,45,49,59
Zhou, Enbo (enbozhou@ucsb.edu): 67
Zhu, Xiwei (xwzhu@zju.edu.cn): 25
Zou, Jian (jianzou2@illinois.edu): 31



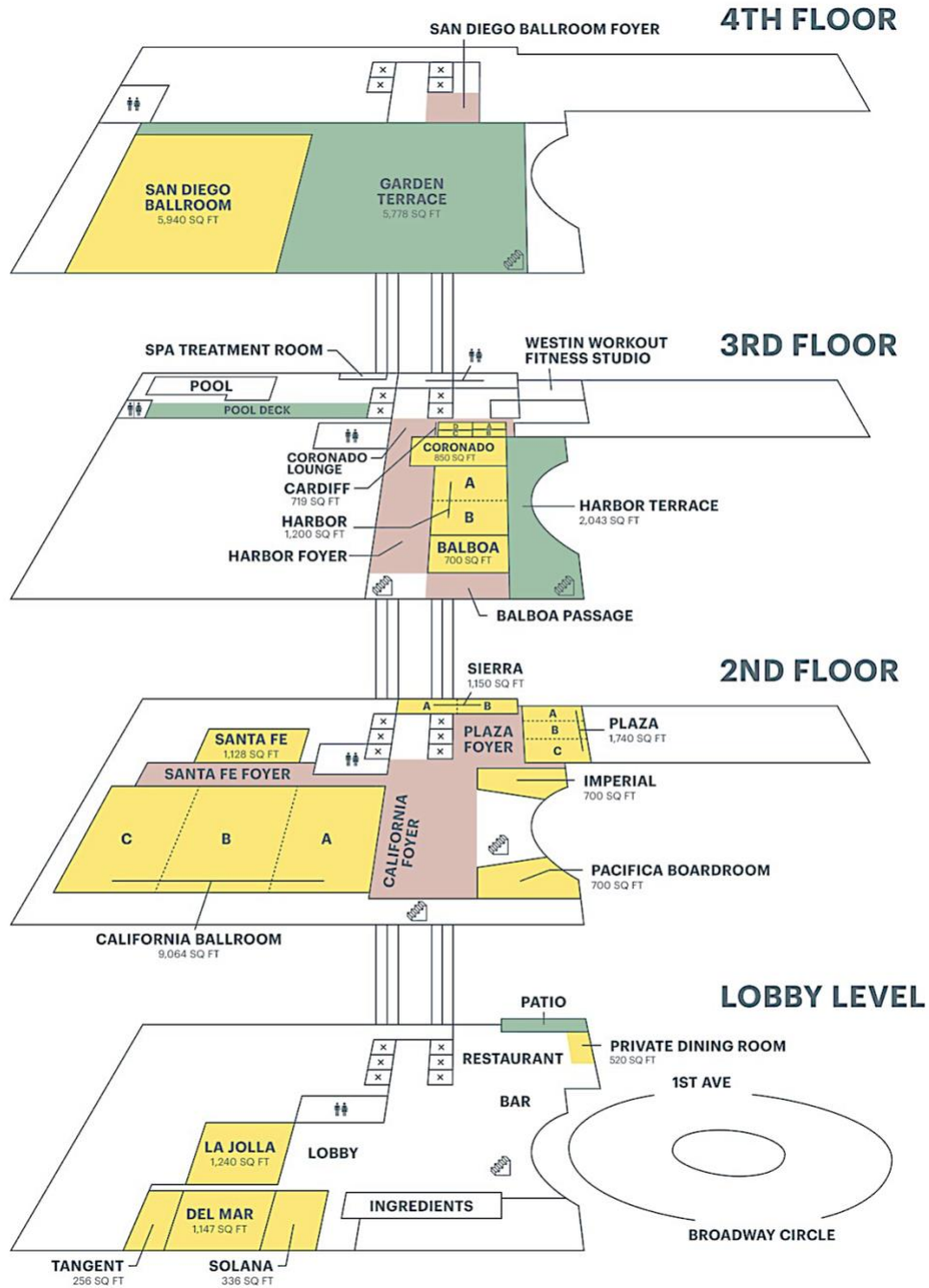
rri.wvu.edu

Founded in 1965, the Regional Research Institute (RRI) is an internationally recognized center for the advancement of regional science. RRI supports educational opportunities and interdisciplinary regional research, with a focus on the economic and Social development of lagging regions.

Among the resources available from the RRI are working papers, technical documents, research reports, input-output materials, and the Web Book of Regional Science.

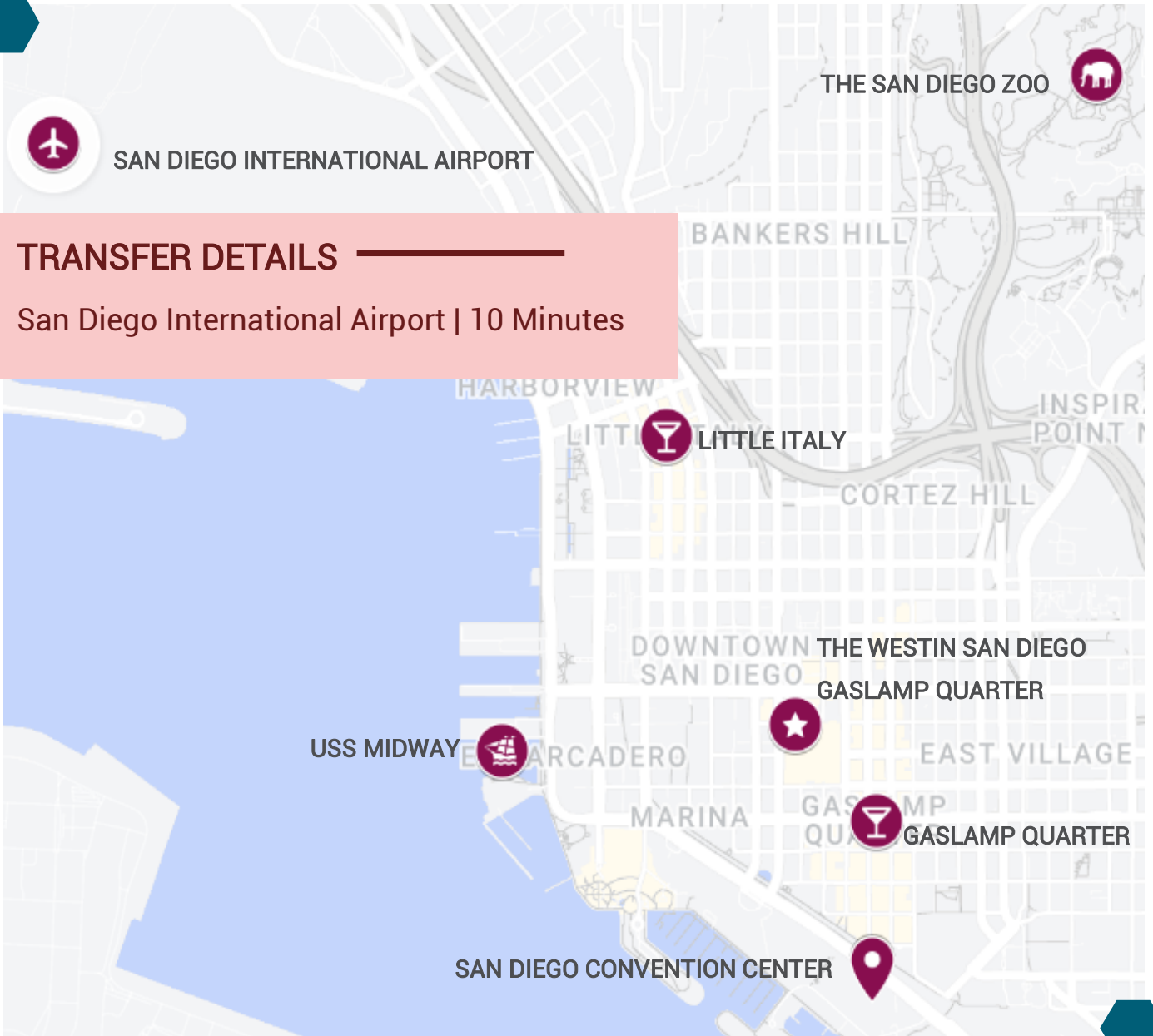
West Virginia University is an Equal Opportunity/Affirmative Action Institution. West Virginia University is governed by the West Virginia University Board of Governors and the West Virginia Higher Education Policy Commission.

Floor Plans of Meeting Rooms



Best of the Destination

DOWNTOWN SAN DIEGO



Downtown Restaurants

Downtown San Diego and Little Italy is booming with amazing culinary experiences, boasting spectacular views and stunning décor, not to mention impeccable service. Let ACCESS deliver a local experience!

With dozens of options to choose from, these culinary powerhouses can accommodate any group size, budget, and taste.

LOU & MICKEY'S



LOCATION

Gaslamp

CUISINE

Steak & Seafood

PRIVATE SPACE: 36

BUYOUT: 130

Nestled in the heart of San Diego's historic Gaslamp District, Lou & Mickey's is a restaurant that showcases their roots serving choice seafood, prime steak, pasta dinners and exotic drinks in a relaxed, inviting environment.

LUMI



LOCATION

Gaslamp

CUISINE

Japanese/Sushi

BUYOUT: 120

Featuring world-renowned celebrity chef Akira Back, Lumi is an energetic and upscale rooftop experience serving innovative Japanese fare and sushi accompanied by handcrafted libations in a vividly unique atmosphere.

WATER GRILL



LOCATION

Gaslamp

CUISINE

Seafood

PRIVATE SPACE
45 / 50 / 18 semi

BUYOUT: 200

For over 25 years, the Water Grill has sated the palates of seafood lovers. Hailed as "the best seafood in Southern California" by the Zagat Guide and USA Today, the Water Grill has consistently offered dazzling "First of Season" seafood preparations of superior quality and freshness.

JOHNNY WAHOO



LOCATION
Gaslamp

CUISINE
American

BUYOUT: 150

A high-energy dining and drinking experience, right in the heart of the Gaslamp! Enjoy our Full Swing golf simulators, over 13 interactive virtual sports, exciting cocktails, spirited décor, and handcrafted bar fare.

THE DECK



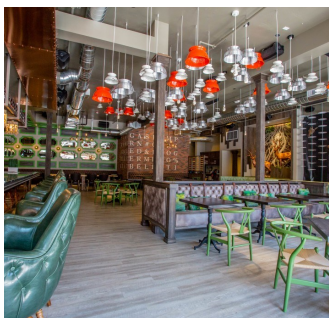
LOCATION
East Village

CUISINE
Barbeque

BUYOUT: 150

The Deck at Moonshine Flats is an open air venue featuring a casual vibe, delicious smokehouse BBQ menu and fun casual cocktails.

RUSTIC ROOT



LOCATION
Gaslamp

CUISINE
New American

PRIVATE SPACE
50 rooftop / 150 1st fl.

BUYOUT: 210

Rustic Root showcases a dynamic rustic American cuisine where dishes are rooted in tradition yet have an inventive modern flair. The signature drink menu concentrates on timeless classics, with creative options for playful drinkers!

PUNCHBOWL SOCIAL



LOCATION
Gaslamp

CUISINE
American

PRIVATE SPACE: 110

BUYOUT: 1000

Inside the Coliseum Athletic Club in Makers Quarter, this famous boxing marquee turned Punch Bowl Social San Diego now has the spotlight on people vs. food; people vs. shots and people vs. games in true Cali style. Here, you'll find scratch dishes, an infamous

BUTCHERS CUT



LOCATION
Gaslamp

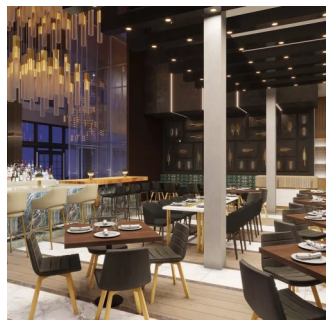
CUISINE
Steakhouse

PRIVATE SPACE: 40

BUYOUT: 150

Butcher's Cut's specialty on seasonal and fresh ingredients is the perfect fit for the West Coast. Encouraged by the California coastline and rustic, simple finishes, there's no other transcendent restaurant in all of San Diego.

HUNTRESS



LOCATION
Gaslamp

CUISINE
Steakhouse

PRIVATE SPACE
70 main/60 mezz/100 GP

BUYOUT: 130

Huntress is the most adventurous and energetic modern steakhouse in downtown San Diego, offering the finest cuts of meat, one of the largest collections of Japanese whisky brands in California, and a contemporary, lively atmosphere where music elevates every dish.

MEZE



LOCATION
Gaslamp

CUISINE
Greek

PRIVATE SPACE: 80

BUYOUT: 300

Our menu features finely crafted Greek cuisine with a Southern California twist. Vegetarian, gluten-free, and unabashed carnivore alike can comfortably sit side-by-side in one of the two private rooms and know that they are all about to have the best meal of their lives.

CLOAK & PETAL



LOCATION
Little Italy

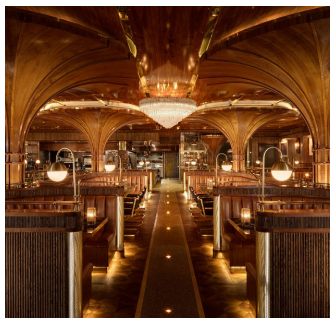
CUISINE
Japanese

PRIVATE SPACE: 120

BUYOUT: 220

The word “cloak” implies secrecy, inspiring our concept of a social sphere humming beneath the levels of ordinary life. “Petal” alludes to the Japanese tradition of “hanami,” when family and friends gather under blooming cherry blossoms to savor food, drinks and fellowship.

BORN & RAISED



LOCATION
Little Italy

CUISINE
Steakhouse

PRIVATE SPACE: Rooftop

BUYOUT: 250

Born & Raised is not your father’s steakhouse. Created by executive chef Jason McLeod and his team, the food offerings read like a rundown of the greatest hits from time honored steakhouses. Tableside carts will offer a rotating selection of dishes prepared while you watch!

BARBUSA



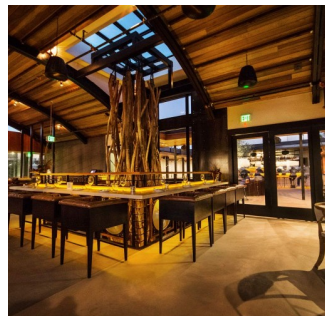
LOCATION
Little Italy

CUISINE
Sicilian

BUYOUT: 130

The newest culinary project by the Busalacchi family in Little Italy, Barbusa offers authentic Modern Sicilian Cuisine with a flare. From artisan pizzas, hand-made pasta and seafood-centric dishes to hand-crafted Italian cocktails and Southern Italian wines, there is something for everyone to enjoy.

KETTNER EXCHANGE



LOCATION
Little Italy

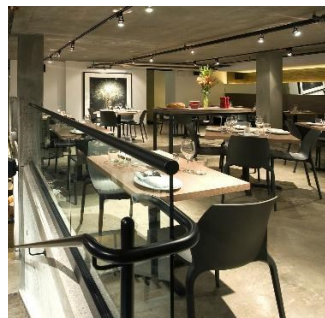
CUISINE
American

PRIVATE SPACE:
12 / 27 / 40

BUYOUT: 250

The recipient of the coveted Orchid & Onion award for Architecture, Kettner Exchange’s design pays homage to San Diego founding father William Kettner. The restaurant boasts two levels of indoor/ outdoor drinking and dining, filled with subtle nods to the City’s great bay and nautical history.

BENCOTTO



LOCATION
Little Italy

CUISINE
Italian

PRIVATE SPACE: 40

BUYOUT: NA

The concept of Bencotto was conceived as a natural extension of the depth and breadth of Italy’s culinary heritage. Our core belief is that high-quality food can be simple and supremely delicious. With an American as well as international audience in mind.

FARMER'S TABLE



LOCATION
Little Italy

CUISINE
Farm to Table

PRIVATE SPACE: 40

BUYOUT: 325

Every good neighborhood deserves an eatery where locals and visitors can come together and enjoy "honest food done right." Welcome to Farmer's Table, where the chefs use locally sourced organic ingredients and combine them to be savored in an inviting atmosphere.

IRONSIDE



LOCATION
Little Italy

CUISINE
Seafood

PRIVATE SPACE: Semi Only

BUYOUT: 150

Ironside has quickly become one of San Diego's best restaurants. It's the latest venture from Michelin-starred Executive Chef Jason McLeod. The raw-bar concept is housed in a stunning 4,500 square-foot, 1920s-era warehouse located in the heart of San Diego's Little Italy neighborhood.

San Diego is always a unique experience, whether it is your first time visiting the area or your hundredth time experiencing what America's Finest City has to offer. Let **ACCESS** take the guess work out of your culinary excursion. Our restaurant services include:

RESERVATION MANAGEMENT

Based on your groups cuisine and experience desires, our destination expert will hand select a restaurant for your evening affair. **ACCESS** will handle the concierge style services for your group. Simply arrive and enjoy some one of San Diego's best kept secrets!

DINE AROUNDS

Give your guests the option to choose their own adventure! A curated selection of restaurants will be available for groups to select from. **ACCESS** will assist with menu selections, confirmations, and modifications, transportation and staffing, and full management and execution of the evenings events.

VENUE BUY OUT

Are you looking to have your entire group enjoy a true Napa Valley experience. Let our talented team collaborate with our partners to create an elevated experience on a grander scale. Nothing is impossible in America's Finest City!